



Nesting season, Maisie in the sun, and primrose photos by Peter Hyde.
Share your pet or Hamble photos for us to include in future newsletters! Send them to us via Facebook, or email them to danielle@smartmarketinguk.com

WELCOME TO YOUR LATEST NEWSLETTER!

I love living in Hamble at this time of year. With the clocks springing forward, the promise of lighter evenings offers the perfect opportunity to enjoy Hamble's green spaces and stunning Foreshore. Whether it's a quiet stroll, an evening run, or simply watching the boats go by, this is a wonderful time of year to make the most of our beautiful village.

An important upcoming date for the diary is the Annual Parish Assembly, which will take place on Wednesday 7 May at 7pm at the Roy Underdown Pavilion. This differs from the standard monthly Full Council meetings, as the Assembly is your meeting – we're simply here to facilitate it. The purpose of the Assembly is to discuss the issues that matter most to the community, and we want to hear from you. What topics would you like to see on the agenda? What local concerns or ideas would you like to raise? Let us know by 28 April by visiting our website or dropping into the Parish Office – [you can read more on page 5](#).

This year's Assembly is particularly special as it will also mark the launch of the inaugural Hamble Community Awards. These awards recognise individuals and groups who live or work in Hamble and have gone above and beyond to support the community since January 2024. The winners will be announced and celebrated on the night. There's still time to nominate – [find out more on page 5](#).

I hope to see many of you at the Assembly, where we can discuss your ideas, concerns, and aspirations for the village.

By the time you're reading this, the first sessions of the Hamble Airfield Inquiry will be just days away. Over the past four months, our legal team, specialist consultants, and the Peninsular Defence Group – which includes representatives from Hamble Parish Council and the Hamble Peninsular Residents Group – have worked tirelessly to prepare the strongest possible case against the proposed quarry.

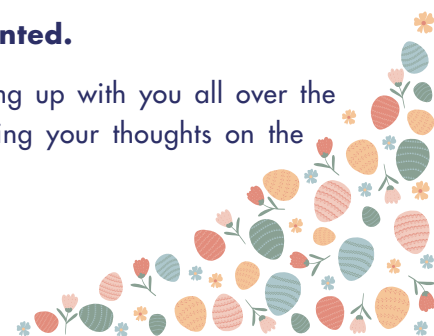
However, while presenting the facts is crucial, it's just as important that the planning inspector sees first-hand the strength of feeling in the community. That's why, if you believe a quarry has no place at the heart of our village, I encourage you to attend the Hampshire County Council offices on the first day of the Inquiry: Tuesday 1 April, between 8.30am and 10am.

Weight of numbers matters. A strong public presence on day one sends a clear message: Hamble stands united in its opposition. If you want to make a difference and contribute to the defence of our village, this is the most powerful way to do it.

Show up and be counted.

I look forward to catching up with you all over the coming weeks and hearing your thoughts on the future of the village.

Chris Jones,
Chair



PARISH COUNCIL CONTACT DETAILS

Your Councillors for 2025-26



Cllr Jones (Chair)
chris.jones
@hambleparishcouncil.gov.uk



Cllr Dann (Vice Chair)
trevor.dann
@hambleparishcouncil.gov.uk



Cllr Alexander
serena.alexander
@hambleparishcouncil.gov.uk



Cllr Cross
malcolm.cross
@hambleparishcouncil.gov.uk



Cllr Hand
simon.hand
@hambleparishcouncil.gov.uk



Cllr Kendall
sue.kendall
@hambleparishcouncil.gov.uk



Cllr Moody
tony.moody
@hambleparishcouncil.gov.uk



Cllr Nicholson
michelle.nicholson
@hambleparishcouncil.gov.uk



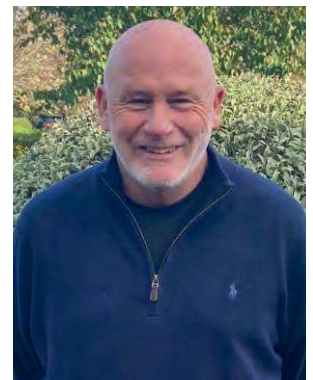
Cllr O'Donnell
nick.odonnell
@hambleparishcouncil.gov.uk



Cllr Thompson
andy.thompson
@hambleparishcouncil.gov.uk



Cllr Underdown
ian.underdown
@hambleparishcouncil.gov.uk



Cllr Venables
mark.venables
@hambleparishcouncil.gov.uk



READY, SET, PLAY!



MOUNT PLEASANT'S MAKEOVER IS COMPLETE!

We're delighted to share that the much-anticipated renovations to the play area at Mount Pleasant are almost complete! The replacement equipment is now in place, and the final touches are being made so that the space can officially reopen during the first week of April.

We would like to thank parents, residents, and local businesses for your patience while this project has been underway, particularly in relation to the temporary closure of the car park during pick-up and drop-off times.

This project has been made possible through S106 developer contributions that were allocated to Hamble Parish Council before the COVID-19 pandemic. S106 payments are provided by property developers as part of planning agreements, ensuring funds are set aside for community improvements.

These funds were designated by Eastleigh Borough Council specifically for renovations at Mount Pleasant. Given the deteriorating condition of the old equipment – including broken fixtures, rising maintenance costs, and an increasing risk of injury – it was clear that investing in new, safer play structures was a necessary step to ensure children could enjoy the space safely.

To celebrate the reopening of the play area, we will be hosting a small launch event on Monday 31 March, in coordination with Hamble Primary School.

A huge thank you to the children of the school who have contributed to the event by preparing a play area pledge, designing a new welcome sign, and creating a huge paper chain that will be cut at the opening ceremony.

We look forward to joining the children on 31 March and will share photos from the event in the next newsletter.



RANGER'S REMARKS

I arrived late to the weekly kleptomaniacs anonymous meeting, and all the seats were already taken!

The grounds team's winter jobs have now finished, one of which was the planting of bulbs ready for you all to enjoy as we enter the spring season. As you travel through the various green spaces of Hamble, hopefully you will discover where some of these bulbs have been planted by spotting the beautiful spring flowers they have produced.

With the arrival of Spring's warmer weather and longer days, the grass has fully awoken from its winter slumber, so the grass cutting begins in earnest around Hamble. Did you know that the smell of freshly cut grass is an odour caused by green leaf volatiles (GLVs) released when it is damaged? The grounds team are also planning to create a few extra wildflower spots around Hamble for people to find and enjoy and of course for nature to benefit from.

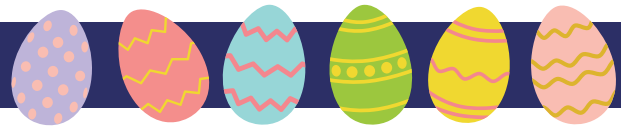
After an unforeseen delay the Miyawaki woodland planting has started at Mount Pleasant recreation ground. This technique



involves densely planting native trees and shrubs in enriched soil, improving biodiversity, air quality, and carbon sequestration, using native species that work together to create a diverse, multi-layered forest community. Trees grow up to ten times faster than those planted in conventional woodland planting schemes. Native trees can also support significantly more wildlife than non-native species.

Finally, several people have accused me of being addicted to auctions but they're wrong. I actually stopped after only going once... going twice...

Mark Cowley,
Grounds Ranger



UPDATE: PLANNING APPLICATION FOR A QUARRY AT HAMBLE AIRFIELD

What has happened since the last newsletter?

The Planning Inspectorate has confirmed that the Inquiry where Cemex's appeal will be heard is likely to last 5-6 days. It will start on Tuesday 1 April 2025 and will run until Friday 4 April. There will then be a pause, before the Inquiry starts again on 24-25 June 2025. This gap is due to scheduling conflicts for the planning inspector and legal representatives. The Inquiry will be held at Ashburton Hall, Elizabeth II Court, Podium Level, The Castle, Winchester, SO23 8UJ.

Our solicitor, barrister, and specialist consultants – supported by the Peninsular Defence Group (representatives from Hamble Parish Council and Hamble Peninsular Residents Group) have submitted our Proof of Evidence (PoE) to the planning inspector. A PoE is a formal written document submitted by witnesses and experts to support our case. It outlines our arguments against the quarry, and presents relevant data, analysis, facts, and professional opinions. Hampshire County Council and Cemex have also submitted their PoEs.

Do you wish to speak at the Inquiry?

You have the right to do so.

- Attend the Inquiry at 10am on Tuesday 1 April. The planning inspector will ask who would like to speak – at this point, make yourself known.
- You will be asked to speak after the opening statements have been made by Cemex, Hampshire County Council, and the Peninsular Defence Group.
- The planning inspector has suggested that speakers should coordinate to avoid multiple people making the same points. Jennie Austin is helping to organise this coordination, so if you would like to speak, please contact Jennie before 1 April: oysterjen@gmail.com.
- If you choose to speak at the Inquiry, please be aware that the legal teams for Cemex and Hampshire County Council are allowed to ask you questions. This 'cross examination' is a formal part of the process and might feel challenging.

What else can you do to show your support?

It's important that the planning inspector understands the strength of feeling in Hamble against the quarry. The best way to demonstrate this is through attending the Inquiry on the opening day.

Even if you can't stay for the Inquiry itself, please stand up and be counted outside the Hampshire County Council offices at Ashburton Hall from 8.30am to 10am on Tuesday 1 April.

Every voice counts – this is your final opportunity to make your views heard. If you feel strongly that our village is not the right place for a quarry, please attend and be part of Hamble's defence.

How to view the Inquiry if you cannot attend the HCC offices

- The Inquiry will be live streamed each day so that you can watch from home. The links for these live streams will be available at: <https://bit.ly/4kE1hdP>
- Join us at Roy Underdown Pavilion from 9.15am each day (1-4 April) to watch the live stream with other residents.



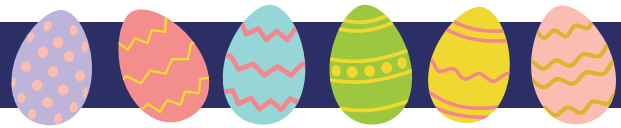
REMINDER TO COLLECT YOUR DINGHY PERMIT!

If you've paid for your 2025 Dinghy Park permit but haven't collected it yet, please do so as soon as possible!

Permits should have been displayed from 4 March as per our T&Cs, so make sure to pick yours up to avoid any confusion.

Permits can be collected from the Parish Office.





ANNUAL PARISH ASSEMBLY: NEW DATE & INAUGURAL COMMUNITY AWARDS

The Annual Parish Assembly is an important event for Hamble residents to raise issues and ideas directly with the Parish Council. This year, due to the Hamble Airfield Inquiry, the meeting has been rescheduled to Wednesday 7 May at 7pm, and will take place at the Roy Underdown Pavilion.

This meeting is an opportunity for residents to discuss key issues affecting our village. You might want to:

- Discuss ideas for community events or initiatives.
- Highlight issues with public spaces, footpaths, or amenities.
- Share thoughts on planning and development in Hamble.
- Suggest ways to improve local services or community/environmental projects.

Would you like to attend?

- Please visit <https://bit.ly/3Fzltwf> to register your attendance.



Would like to suggest a topic, issue or idea?

- Please visit <https://bit.ly/3Fzltwf> or;
- Email reception@hambleparishcouncil.gov.uk

This year's Parish Assembly promises to be particularly special, as we will be presenting our first-ever Annual Community Awards! This scheme recognises individuals and groups who have made a positive impact in Hamble.

Award Categories:

- Community Recognition Award – for individuals aged 17+
- Community Recognition Award for Young People – for those 16 and under
- Community Recognition Award for Groups – for voluntary organisations and community groups

Anyone who lives or works in Hamble and has made a meaningful contribution between January 2024 and April 2025 can be nominated.

Nominations will be reviewed at the April Full Council meeting, and winners will be announced at the Annual Parish Meeting in May.

Each winner will receive a certificate and a £100 gift voucher.

- Deadline for nominations: 7 April 2025
- Visit the HPC website to nominate, or collect a form from the Parish Office.

We look forward to seeing you on 7 May and celebrating the incredible contributions of our local community!

LOCAL POLICE UPDATE

Hamble Parish Council would like to extend our thanks to PC Simon Peacock for joining us at the March Full Council meeting. We always appreciate the support of our local police team, particularly during the busy summer months when their presence is vital to ensuring the safety of our residents and visitors.

During the meeting, Simon spoke about Operation Aquatic, the police initiative aimed at tackling anti-social behaviour at the Foreshore and other hotspots in Hamble and the surrounding areas. He emphasised the importance of reporting incidents when they occur, as this helps the police build a true picture of the scale of the issue and allocate resource appropriately.

We encourage all residents to report anti-social behaviour and other crimes through the proper channels:

- **Call 999 immediately** if a crime is taking place right now.
- **Report online:** <https://bit.ly/3Fz4JGk>. This can be done at any time after witnessing an incident.
- **Report anti-social behaviour directly:** <https://bit.ly/3DTNqiP>



While social media is a great way for the community to share concerns, it is not a police reporting tool.

Officers can only act on formal reports made through the correct channels, so please take the time to report incidents properly – it makes a real difference!



UPDATE FROM ST ANDREW'S HAMBLE

Please see below the list of Easter services for St. Andrew's Hamble

- **Palm Sunday, 13 April:** 10am, Procession followed by sung Eucharist
- **Maundy Thursday, 17 April:** 10am, Eucharist with foot washing
- **Easter Sunday, 20 April:** 10am, Easter Eucharist

Please think about supporting our very hard-working vicar Hayley and her ministry team. You will be made very welcome. We look forward to seeing you.

There are two events at the Priory Centre to note in your diary. On 5 April we have our delicious men's breakfast at 8.30am. The cost is a very reasonable £6 and for that you get copious amounts of orange juice, tea or coffee and a traditional full English with as much toast as you can eat. Booking is essential – call Kay on 02380 454745

The second event is Place 2b from 10am – 12pm on 26 April when all are welcome for tea or coffee and delicious home-made cakes. No need to book, just bring yourself.

We look forward to seeing you then.

UPDATE FROM THE MERCURY LIBRARY & COMMUNITY HUB

As you may know, we have been running a bring & buy sale to help raise funds towards the legal costs involved in challenging Cemex's appeal to turn Hamble Airfield into a quarry. At the time of writing, we have raised the fantastic sum of just over £600.

We are hosting a coffee morning on 5 April at 10am to further boost the funds raised. On the day, we will also be selling off as many remaining items as possible, so there will be plenty of bargains – please come along to show your support and demonstrate the village's strength of feeling on this issue. After 5 April, we will still gladly accept monetary donations from those who prefer not to donate online.

The Hub will be live-streaming the Inquiry from 10am each

HAMBLE CONSERVATION VOLUNTEERS

Those visiting Hamble Common cannot fail to notice the efforts we have made to clear undergrowth and hazardous debris in time for the arrival of cattle which play such an important part in maintaining the now rare environment of coastal heathland. Old fencing and barbed wire had to be removed along with plant debris which was going to restrain the seasonal growth of grass and make it less attractive for grazing. Sometimes we are asked why we appear to spend so much time removing vegetation from the Common; we explain that heathland is not a natural environment and has arisen from human intervention over thousands of years and now has its own ecosystem of plants and wildlife which cannot live anywhere else.



Our annual programme of tasks is displayed on our website and notice boards posted around the Common. We meet on Mondays at 10am; the meeting place for the Parish tasks is at Roy Underdown Pavilion at SO31 4RN.

If you would like to know more about us, please either visit <https://bit.ly/3RF1W2h> or contact Philip Rawlinson:

philiprawlinson123@btinternet.com, 07810 453138.



day between 1-4 April. Spaces are limited, but you are welcome to drop in and listen as it unfolds.

With spring just around the corner, we are excited to host a story time session on 11 April from 10:30am to 12pm, followed by a free children's craft session from 2pm to 4pm on the same day. There will be plenty of fun Easter activities for children of all ages – so bring the family and join in!

The Hub is a welcoming space for everyone – young, old, and everything in between. If you haven't visited us yet, add it to your to-do list – you won't be disappointed!

accountably
CHARTERED ACCOUNTANTS

Services for Individuals & Local Businesses

Company Accounts
Tax Planning
Personal Tax
Start Ups

If you have a (tax) problem, if no one else can help, maybe you can hire The A - Team
Free Initial Consultation
www.accountably.co.uk
enquiries@accountably.co.uk

023 8045 3907

HAMBLE LOCAL HISTORY SOCIETY: HAMBLE RIVER'S CLASSIC SUPERYACHTS

At our next meeting in April, Ian Underdown will be telling the fascinating story of some of the best-known world classic superyachts that were saved by the mud of the Hamble River to sail in their magnificence today.



During the 1950s to 1970s the J Class Endeavour and Velsheda, plus the Big Class yacht Lulworth, were passed by in their mudberths on the river with most yachtsmen dreaming of owning them and getting them sailing again. The J Class were the most beautiful racing yachts ever built, and the Big Class raced against the King George V's renowned yacht Britannia.

Ian will be giving a well-illustrated history of these superb Hamble yachts from their launching to their revival and videos of them sailing today in the world's most luxurious locations.



'Lulworth' in her Hamble River mudberth.

This will include mention of two of the most successful skippers of these superyachts: Captain Bevis from Swanwick and George Williams of Hamble. This talk is not to be missed by anyone who is interested in Hamble River.

This meeting will be on Thursday 3 April, 7.30pm, at the Memorial Hall (Rear Hall). New members and visitors are always welcomed! Our meeting fee is just £2. If you would like more information please contact our secretary, Margaret Greenfield: 023 8045 4373.

HAMBLE FLOWER CLUB

At our AGM in March, we officially launched our programme for 2025/26 and presented awards to Sandra Woolridge (the winner of The Christine Wright Award), Bobbie Cotton (who won the Pat Maple award), and Judy Raponi and Wendy Taylor who jointly won the President's Award. Betty King was also presented with an Honorary Members badge. Congratulations to all the winners.



Our Club meeting in April is something a little different. The very talented Harriet Riddell is coming along with her sewing machine to tell us about her journey around the world... with a little twist. Non-members are welcome for a small fee of £8 payable on the door.

Our May Club meeting sees us creating Lonely Bouquets for distribution around the village... will YOU be one of the lucky ones to find one?

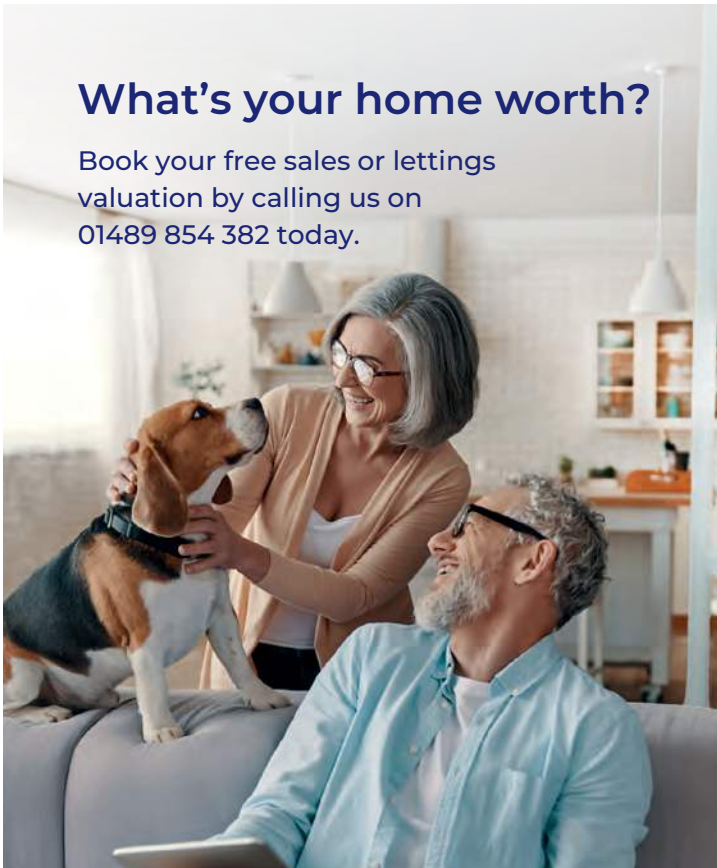
Our popular Floral Classes are back at the Roy Underdown Pavilion. The first session will take place on Monday 19 May from 1pm to 3:45pm, followed by Monday 16 June and Monday 21 July. The cost for non-members is £40 for all three sessions. Spaces are limited, so please get in touch to secure your place.

We're a welcoming group, and if you'd like to join one of our meetings or have any questions, feel free to contact us at info.hambleflowerclub@gmail.com. We meet on the 2nd Monday of each month at Hamble Memorial Hall. We look forward to seeing you!

Rosie Skeats, Chairman

What's your home worth?

Book your free sales or lettings valuation by calling us on 01489 854 382 today.



Scan the QR code to book your free valuation today.

L | LEADERS

COMMUNITY NEWS



HAMBLE LADIES GROUP

Karen Townsend came along to our March meeting to talk to us about Misty Ceramics.



Karen explained that she had always wanted to 'throw' from an early age, but the opportunity never arose. Her working career was in marketing, she travelled the world diving and raised a family, and it wasn't until lockdown that she decided to follow her passion and start making ceramics. The inspiration for her work comes from the photographs taken underwater by her husband during his diving career.

Although a very talented artist Karen told us that she refers to YouTube to help her with her work. Her ceramics are beautiful, and you can see the love she has for the sea in them. She also uses certain spirit and wine bottles for her work. These are broken and tumbled to make smooth and then used to create her work.

Karen set up a display of her ceramics for us and had a lot of interest from our members. She also runs workshops, teaches in schools, is involved in community work at Portsmouth Museum, and has an exhibition planned at Bursledon Brickworks.

A very interesting afternoon. Karen has promised to come again and bring some clay with her so we can all have a go at creating some pottery. Now that will be fun.

Our next meeting is on 8 April when we have SIGN4FUN visiting us, and not Sing4fun as printed in last month's magazine. My mistake – whoops.

Meetings start at 2pm, at the Hamble Priory Centre.

Why not join us? You will be very welcome.

Bobby Conduit,
023 8045 3626



UPCOMING DATES

Upcoming Parish Council Meetings at Roy Underdown Pavilion

Full Council
Monday 14 April
7pm

Planning Committee
Monday 28 April
7pm



Cemex Inquiry

**1 - 4 April
From 10am**

Held at Ashburton Hall, Elizabeth II Court, Podium Level, The Castle, Winchester, SO23 8UJ. Live streaming daily from 9.15am at Roy Underdown Pavilion.

Annual Parish Assembly

**7 May
7pm**



At Roy Underdown Pavilion.
Register your attendance:
<https://bit.ly/3Fzltwf>

Spring Half Term

7 - 21 April



Coffee Morning

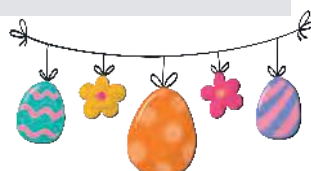
**5 April
10am - 12pm**

At The Mercury Hub. Raising funds towards legal costs to fight the Airfield appeal.

Hampshire and the Solent Devolution Consultation: Deadline for Responses

13 April

For more information visit
<https://bit.ly/4hFfLXX>



THE BUGLE
HISTORIC WATERSIDE PUB

Locals' Night

First Thursday of each month 8.30pm - 10.30pm

DROP IN FOR LIVE MUSIC, DINNER, DRINKS, OR BOTH!

*Scan here for
upcoming artists*

*To book visit our
website or call*

WWW.IDEALCOLLECTION.CO.UK | 023 8045 3000
THE BUGLE, HIGH ST, HAMBLE SO31 4HA