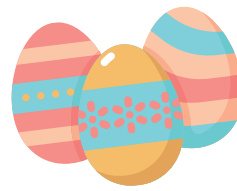


# Hamble Village News —

## April 2023



HAMBLE  
PARISH  
— COUNCIL —



Residents' Pets (and owners): Sumi and Cosmo (Melanie), Tommy (Bill and Trish)

Share your pet, plant or Hamble photos for us to include in future newsletters! — send them to us via Facebook, or email them to [danielle@smartmarketinguk.com](mailto:danielle@smartmarketinguk.com)

## WELCOME TO YOUR LATEST NEWSLETTER!

After many months of dealing almost exclusively with the Hamble Airfield planning application, it was nice to see a group of residents attend our March Full Council meeting to talk about the Foreshore and conservation area. They highlighted concerns relating to some of the changes that have taken place as well as the condition of parts of the conservation area such as the cobbled street. Raising these issues is timely as we have been pressing Eastleigh Borough Council to update the current policy for the area. The former conservation officer from Eastleigh (who is now a consultant) joined the Planning Meeting in February and discussed how best to update the policy. While our attention is still very much on the Hamble Airfield application and the final stages running up to the Regulatory Committee, it will be something we come back to in the coming months.

In terms of the Hamble Airfield application, we are still awaiting consultees' responses – including the list of mitigations asked for by Hampshire Highways, and information that the Flood Authority has requested in respect of the type of infill material that will be used and the impact this will have on potential flooding risk. While waiting for these to land, parish councillors have set up a Working Group with the Hamble Peninsular Residents Group and are in regular contact.

As we approach the final stages of the Hamble Airfield application, we will be reviewing the work already carried

out to ensure that we have focused on the issues that we believe are most likely to result in a refusal. The comprehensive response from residents, businesses, and other stakeholders means we are confident that the wider issues have been fully covered. All our responses to Hampshire County Council are on the blog on our website – but please contact the Parish Office if you think we have missed something significant.

Finally at March's Full Council meeting we planned to say goodbye to two members of staff. Chris Ayres will be leaving the council at the end of March. He has been part of the Hamble team since July 2002 and has very much been a mainstay of village life – out and about in all our lovely public spaces looking after them and keeping everyone safe.

As well as Chris, we will be saying goodbye to Amanda our Clerk who will be moving on in May when the Council enters its final year before elections. Amanda has overseen an incredibly difficult period in Hamble, supporting the village and Parish Council team and Councillors throughout Covid, and then co-ordinating the Parish Council's opposition to the Hamble Airfield application. She will be very much missed.

All change!

**Cllr Simon Hand**

Chair of Hamble Parish Council

## PARISH COUNCIL CONTACT DETAILS

☎ 023 8045 3422    🌐 [hambleparishcouncil.gov.uk](http://hambleparishcouncil.gov.uk)    ✉ [clerk@hambleparishcouncil.gov.uk](mailto:clerk@hambleparishcouncil.gov.uk)    📱 @hamblepc

# COUNCIL LED NEWS

## DOGS IN PUBLIC AREAS OF HAMBLE

At our March Full Council meeting, Cllr Andy Thompson raised a community interest item about the number of incidents with dogs in and around the village following the tragic death of a dog walker at the start of year in Surrey. His challenge to the Council was to see if there is anything that can be done to regulate the walking of dogs in public areas of the village.

There will be a further discussion about this at our next Full Council meeting – but here is some background information.

Dog Control Orders exist to help manage the following:

- a. failing to remove dog faeces;
- b. not keeping a dog on a lead;
- c. not putting, and keeping, a dog on a lead when directed to do so by an authorised officer;

- d. permitting a dog to enter land from which dogs are excluded;
- e. taking more than a specified number of dogs onto land.

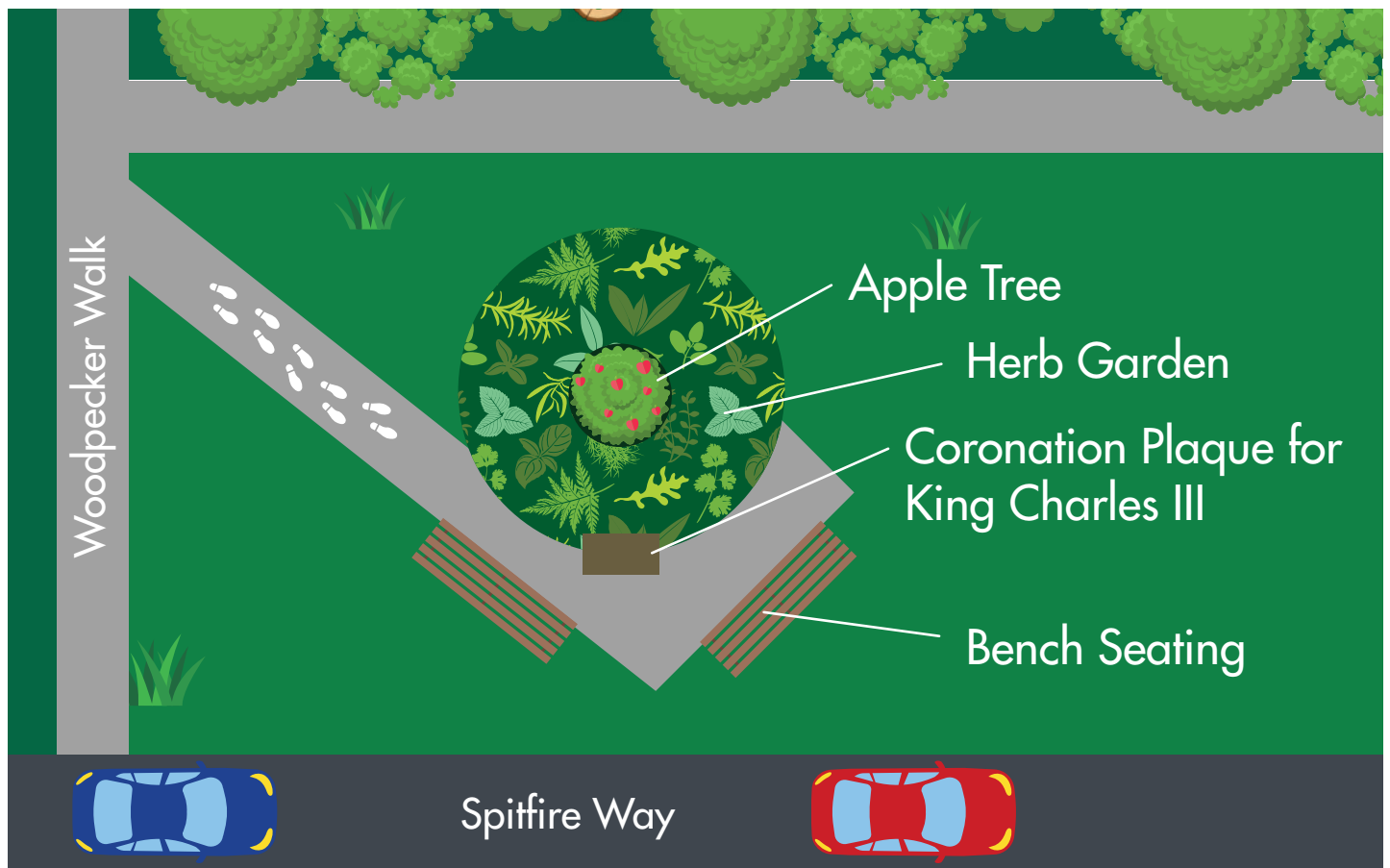
Where an order has been created and an offence is committed, the offence can attract a fee or a fixed penalty notice. Orders are usually only used in public spaces.

We understand that Eastleigh Borough Council (EBC) is considering the use of Dog Control Orders and is calling for evidence of incidents that might help them in their decision making. If you have a specific concern or have been involved in an incident and are happy to share this with EBC, please let us know or come to our next meeting on Tuesday 11 April at 7pm at the Roy Underdown Pavilion.

---

## A NEW HAMBLE CORONATION GARDEN

To mark King Charles III's Coronation, we are planning a community 'sensory' garden on Spitfire Way – close to the 'new' apple tree. We are considering herb beds, two seats and a commemorative plaque. If you have any herbs you would like to donate to the garden, please let us know!



# APPLICATION TO EXTRACT SAND AND GRAVEL FROM HAMBLE AIRFIELD: UPDATE

There has been a lull in the progress of the application in recent weeks, while the Hampshire County Council (HCC) case officer prepares their report for the HCC Regulatory Committee to consider.

At the time of writing, no date has yet been set for the Regulatory Committee meeting where this application will be decided, but it is likely to be held in May or perhaps June.

In advance of the Regulatory Committee meeting, the HCC councillors who sit on the Committee will visit Hamble to view the proposed location of the quarry.

Regrettably, nobody will be given advance notice of when this visit will take place. While we cannot influence the timing of this visit, we have prepared a map of key locations for the councillors to view to help them better visualise some of the objections raised by the Parish Council and residents during the consultation period.

This map highlights the proximity of the proposed quarry to schools, homes, and local businesses. We have not yet submitted the map to HCC, so if you know of a key location that you'd like us to flag to the Regulatory Committee councillors, please let us know by 7 April.

We have also submitted a list of potential mitigations, conditions, and obligations we will be asking HCC to impose, should the application be approved. You can view this list here: [bit.ly/3FNbEzP](https://bit.ly/3FNbEzP)

## What are planning mitigations?

The planning system is based on a presumption that an application will be approved unless there are specific issues that make it unsuitable.

Most applications will have elements that would not allow the development to proceed if they are not

adequately addressed. The role of the planning officer is to identify areas of concern and to then identify ways to 'fix the problem'. This could be achieved in a number of ways – i.e., changing the design prior to approval; imposing a planning condition which would normally deal with how the site will be used after approval is given; or through a planning obligation which requires something to be done – that isn't necessarily on the site but will be impacted by it. The planning obligation might be a financial contribution towards the solution.

Taken together these measures are known as mitigations.

## What can mitigations cover?

The planning officer can only seek mitigations that are related to the application. In the case of Hamble Airfield and the Cemex planning application we would expect HCC to request measures to improve highway safety at key locations and well as improving junctions that will be impacted by the additional truck movements.

What HCC cannot ask for is the whole of Hamble Lane to be improved as this is a pre-existing problem.

## How have we assessed the issues to raise with HCC as mitigations?

When we held the public meetings in January, we asked people to contact us with their concerns and the very direct ways in which they felt the quarry would affect them if it was approved. We have used this information as the basis for the mitigations we have asked for.



**Roy Underdown Pavilion  
Available for Hire!**

- Children's Parties
- Meetings
- Corporate Events
- Community Groups

**To Book,  
Call 023 8045 3422**

# APPLICATION TO EXTRACT SAND AND GRAVEL FROM HAMBLE AIRFIELD: UPDATE

## What mitigations have we asked for?

Based on the currently available information, we have asked for a series of measures to improve safety for users of Hamble Lane and those living around the site. We have also asked for measures to minimise traffic, congestion, and pollution, so that the daily impact of the quarry for near neighbours can be reduced. We have asked for conditions to be imposed which will give the village a space that we can make use of and be proud of once the quarrying has stopped. In short, we want to ensure that – if approved – our children and young people will be safe, that residents will still be able to enjoy their homes, and that businesses and visitors still find Hamble the best location to be.

However, rest assured we remain fully committed to opposing the quarrying application. Pre-decision discussions regarding mitigations are a normal part of the planning process for an application of this size and scale, and it is important that the community's wishes are considered by HCC ahead of the Regulatory Committee meeting.

## FURTHER STATUTORY CONSULTEE RESPONSES RECEIVED

The long-awaited response from Natural England has now been published. Sadly, Natural England do not provide a firm answer on whether it supports or opposes the application as it currently does not have sufficient information from CEMEX. They have asked for more information to assess the potential quality of the land on the Airfield site for agricultural purposes and the strategy for its restoration and reuse. This is a government requirement designed to safeguard the most productive land for agricultural use as part of its food security arrangements.

Natural England's response also highlights the potential contribution that the site could make to supporting Solent Waders and Brent Geese which would help to improve the biodiversity of the site as part of the restoration policy. It also highlights the option for the

## Switching agents has never been so easy-peasy...

Move your properties to Leaders and get 3 months' **FREE\*** management.

Call us on **01489 854 382** or visit **leaders.co.uk**.

**L** | LEADERS

\*T&C's apply.

site to form part of the sustainable alternative natural Greenspaces, taking pressure off more sensitive sites. This reinforces our view that the site should have community wide recreational potential in the future and should be protected for a minimum of 30 years.

Hampshire County Council's Arboriculture or Tree officer has also responded raising concerns about the trees that are likely to be lost because of the access point. They have asked that CEMEX explores more fully the implication of these trees being lost and will not support the application until this has been done.

We will be contacting Hampshire County Council about these issues and in particular the failure to provide the required information for a full response to be made. We will press them to go ahead with the decision process based on the current information given the time already allowed to Cemex.



# COUNCIL LED NEWS CONTINUED

## UPDATE ON THE FRIDAY SNUG

The Friday Snug was initially born out of a desire to do something practical to help during the cost of living crisis.

As a first step, we approached the committee at the Priory Centre to see if they were able to support the initiative. They offered us the use of their kitchen and hall facility free of charge on Fridays.

We opened on 14 October 2022, offering a warm space, hot drinks, and a three course hot meal. We advertised on social media, through local publications, and via the Food Bank. From an initial group of four in our first week, we now regularly serve up to 20 people and deliver a hot meal to those who cannot get to us.

Moving forward, the Friday Snug will end as a warm place on 31 March. However, we have identified an ongoing need for a space where people can socialise, enjoy an affordable meal together, and chat. We believe that isolation is as great a concern as rising costs in the Hamble area.

The plan is to continue to open on alternate Fridays throughout the year on a 'pay what you can afford' basis. This will enable us to contribute to the running costs of the Priory Centre and also reach a wider group. Your support to date has been greatly appreciated, and the plan is to restart the Friday Snug, in its existing format, next winter.

Kay Baker

## HAMBLE PENINSULA ART TRAIL

Work has started on a new trail that will take visitors on a tour of the unique history, character, and ecology of the Hamble Peninsula, incorporating the parishes of Hamble, Bursledon, and Hound.

Parish posts, wayfinding markers and maps for the new Hamble Peninsula Trails are currently being installed and will be available for families to discover in the coming months.

The Hamble Peninsula offers a dazzling mix that encompasses historic shipbuilding, pioneering aviation, sailing, railways, early industries and agriculture, ancient monuments, and warfare, together with a natural environment that encompasses shoreline, ancient woodland, riverside and heathland.

The project has been funded through the South Western Railway Customer and Communities Improvement Fund and developer contributions made to Eastleigh Borough Council from local development schemes. Designed by a local creative collaboration, the series of self-guided trails use artworks and specially crafted wayfinding markers to help people explore and celebrate the richly diverse heritage and nature of this very special part of the Borough of Eastleigh. The venture will be delivered by the Borough Council in partnership with Hamble, Hound and Bursledon Parish Councils, local experts, and amenity societies.

Keep an eye on our social media feeds and website for a downloadable/printable copy of the Art Trail map when it is published in early April.

## SPORTWORKS COMES TO HAMBLE!



The SportWorks team at Eastleigh Borough Council is expanding the well-loved Borough-wide Park Sport programme into the Easter holidays. This will continue to give five- to 16-year-olds the opportunity to participate in accessible, inclusive, and affordable sport and physical activity.

The programme will run over the two weeks in April:

- Tuesday 4 – Thursday 6 April
- Tuesday 11 – Thursday 13 April

Two SportWorks events will be held in Hamble:

- Wednesday 5 April, 1.30pm – 2.30pm: Boccia in the field outside the Roy Underdown Pavilion.
- Thursday 13 April, 1pm – 3pm: Basketball on the Roy Underdown Court.

We hope to see many of Hamble's young people join in!

# COUNCIL LED NEWS CONTINUED

## RANGERS REMARKS

Hello Hamble Habitants.

My therapist told me today that I'm totally incapable of expressing my feelings... I can't say that I'm surprised!!

A few residents of Hamble have asked me about the significance of the white gate next to the library, by the path to Cirrus Gardens. Our own local historian, Cllr Ian Underdown, has kindly provided me with the history of this feature.

"It was the gate to the main entrance of the former airfield's sports ground and was located at the corner of the High Street and Hamble House Gardens.

The sports ground was owned and used by Air Service Training and subsequently the College of Air Training. It was reputed to be one of the best in Hampshire. It had its own full-time groundsman and a pavilion. In the summer it had a superb cricket pitch and during the winter hockey, football and sometimes a rugby pitch were in use.

When the College of Air Training closed and was sold, development was only allowed where its buildings were located and not on its open land. A developer sought planning permission to build on the sports ground and was initially opposed. Eventually, it was agreed that the developer would provide a replacement sports ground, which became known as the College Playing Fields, so they could build Cirrus Gardens.

As part of the agreement, the sports ground's main gate was relocated and made a feature of the new development, as a reminder of the site's previous use."

Whilst digging for the planting of the trees and bulbs recently, I encountered a good number of worms, which made me think that Hamble newsletter readers need some interesting worm facts in their lives – so here goes.

- Charles Darwin, best known for his theory of evolution, studied worms for 38 years. In 1881, just before he died, he published a book on them with his findings. In this book he suggested earthworms are the most important creatures on Earth.

- Worms live in the dark and are very sensitive to light. They do not have eyes but can detect light through their skin. Also, they will move away from light so that their skin stays moist. If worms are exposed to light for too long, they will become paralysed and unable to burrow back into the darkness.
- Worms cannot breathe in through their mouth, and don't have a nose either. Instead of lungs, worms have a thin permeable skin through which oxygen in air passes through. The mucus on a worm's skin helps to dissolve the oxygen. If a worm dries out, it will suffocate. Likewise, if a worm's environment is too moist, they drown.
- Earthworms are hermaphrodites, meaning they have both male and female reproductive organs. During mating, both sets of sex organs are used by both worms. If all goes well, the eggs of both mates become fertilized.
- Worms have tiny bristles, known as setae, on each segment. The setae help it move through soil and allow the worm to grip the surrounding soil. The setae are very strong and formed from the same material that makes up our fingernails.

Mark Cowley, Estate Ranger

## VOTER ID REQUIREMENT

From 4 May 2023, voters in England will need to show photo ID to vote at polling stations.

If you do not have any of the accepted forms of photo ID, or your ID no longer looks like you, you will need to apply for a Voter Authority Certificate, which is a free photographic identification document specifically for the purposes of voting.

Voters who do not produce valid ID will not be allowed to vote on the day.



To find out more about accepted forms of photo ID, or how to apply for a free Voter Authority Certificate, please go to: [bit.ly/2KvTTQH](https://bit.ly/2KvTTQH)

# COMMUNITY NEWS

## HAMBLE LOCAL HISTORY SOCIETY: SOUTHAMPTON PASSENGER SHIPS & DOCKS



At the Society's next meeting Jake Simpkin will be giving a well-illustrated presentation that looks back with nostalgia at some of Southampton's

most famous passenger liners and cruise ships. He will also explore the growth and development of Southampton Docks.

Jake's talk will be based on how the port of Southampton developed from the 1800s up to the present day, illustrating the different ships that have used it over the years. It begins with the first steam ships and traces the development of passenger terminals to keep pace with the ever-growing size of the liners. Surely the Titanic, the Cunard Queens and other notable liners will be mentioned at this meeting on Thursday 6 April, 7.30pm, at the Memorial Hall (Rear Hall).



Modern day cruise ship, the Oriana.

New members and visitors are always welcomed! Our meeting fee is just £2. If you would like more information please contact our secretary, Margaret Greenfield (023 8045 4373).

## HAMBLE CONSERVATION VOLUNTEERS



Given the low temperatures recently, one could doubt the approach of Spring. Nevertheless, we now need to bring a halt to our scrub clearance as it may

interfere with nesting birds. Much has been achieved this year thanks to large turnouts of volunteers and the post Covid return of companies seeking ways to help their local communities. The extra numbers really make a difference. We will now turn our attention to paths

## WHO KILLED THE HOTEL MANAGER?

We hope you all enjoyed our recent play, 'Out of Focus'. Of course, if you receive this newsletter before 1 April there's still time to have an entertaining night out.



Just check out [bit.ly/3ndvPcW](https://bit.ly/3ndvPcW) for ticket availability or phone the Box Office on 02380 440660.

Coming up (2-4 June) is one of our very popular Murder Mystery Evenings: 'Who Killed the Hotel Manager?'. These only run for three performances so book now to avoid disappointment. Seats are arranged in cabaret style with tickets at £15 per head to include refreshments. As usual, the action takes place in Hamble Memorial Hall at 7.30pm. Tickets are available at Ticketsource (see above) or via the Box Office.

**EXCITING NEWS!** We will be launching our new website in the near future, which will give you all up to date news alongside photos from our past productions, plus contact details and much more. Watch this space!

Meanwhile, if you wish to join us please contact the Membership Secretary Maria:  
[mariahamble@icloud.com](mailto:mariahamble@icloud.com)

and fencing which inevitably need maintenance after the rigours of winter.

Our annual programme of tasks is displayed on our website and noticeboards posted around the Common. Please note that the meeting place for the Parish tasks is at the Roy Underdown Pavilion at SO31 4RN whereas beach cleans and Eastleigh tasks meet at the School Lane car park.

If you would like to know more about us, please visit [bit.ly/3FH31jq](https://bit.ly/3FH31jq) or contact Philip Rawlinson:

[philiprawlinson123@btinternet.com](mailto:philiprawlinson123@btinternet.com), 07810 453138.



# COMMUNITY NEWS

## HENVILLE EDUCATIONAL FOUNDATION

If you are a Hamble resident or Hamble youth group under the age of 25, funding is available for educational resources such as:

- Books
- Assistance with fees for training courses
- Educational visits/trips
- Resources/equipment
- Special Educational Needs
- Private tutoring
- Sporting and musical activities may also be considered

In 1848 the Reverend Charles Henville founded the Trust and gave the rent from Henville House to fund it. This continued after his death but in the latter part of the 20th Century the house was sold, and the money raised invested wisely so that his wish to help the residents and youth groups of Hamble who are under 25 years of age could continue.

The Trust meets 4 times a year (March, June, September, and December) to consider and/or distribute the funding. Grants are awarded to those whom the Trustees consider are in the greatest need or would benefit the most.

Please telephone Wendy Mason (02380 452720) for further information and/or an application form. The form is easy to complete, and confidential advice is available should you require any help.

All applications are confidential so please do not hesitate to apply if you feel that there is something that the Trust may be able to help you with.

## HAMBLE LADIES GROUP

It is possible for everyone to find out about their family tree, but it takes a lot more time and research to learn about your ancestors. Paul McNeil came along to our meeting in March to give us an insight into what it entails and how interesting it can be.

Paul told us about growing up in Peckham off the Old Kent Road in London. After leaving grammar school and working for Greater London Council, he went on to have a very successful career in IT, retiring twice and now working in what he absolutely loves to do.

He explained about his involvement in DNA Journey, an ITV programme where celebrities are taken on a 'journey' to find out about their ancestors. Paul does a lot of research and has appeared on the programme to give some very interesting stories about their relatives. He kept us totally engrossed telling us about some of the exciting history he has discovered. It can be emotional, unbelievable, and amazing all at the same time.

I cannot do justice to his talk and slide show but would highly recommend getting in touch with him if you want an excellent and interesting speaker. His details are 'Time Detectives' paulmcneil@timedetectors.co.uk. You never know what you might discover – good or bad!

Our next meeting will be held on Tuesday 11 April. David Pearson from Hamble Youth Club will be speaking. We start at 2pm and meet in the Priory Centre, Hamble.

Why not join us? Everyone is welcome.

Bobby Conduit, 023 8045 3626

## EASTER SERVICES AT ST. ANDREW'S CHURCH

2 April - Palm Sunday  
10am: Procession and sung Eucharist

6 April - Maundy Thursday  
7pm: Eucharist with foot washing and watch of prayer

7 April - Good Friday  
11am: Stations of the Cross  
2pm: Devotions to the Cross

9 April - Easter Sunday  
10am: Mass of the Resurrection





# COMMUNITY NEWS CONTINUED

## FUNDRAISING SUCCESS AT THE MERCURY LIBRARY AND COMMUNITY HUB

Following another successful fundraising coffee morning, a cheque for £270 was handed over to Paul from the Hamble Lifeboat by three of our volunteers. A big thank you to everyone who supported this very worthy local cause. Our next fundraising event will be held on Saturday 22 April from 10.30am to 12.30pm in support of the Hampshire and IoW Air Ambulance. Do come along and enjoy a cup of tea or coffee together with some delicious homemade cakes.



Our regular activity sessions continue to be popular. Quill and Chill on Monday mornings; Knit and Natter on Tuesdays; and free IT advice on Wednesday afternoons. Since introducing cribbage on a Monday afternoon, we now have chess and other board games for visitors to enjoy. If you prefer a jigsaw there's always one on the go. The Citizens Advice Bureau continues to offer a free drop-in session on the first Wednesday of each month from 10am-12noon. On the last Saturday of the month there's Children's Quilling.

The book club is held on the first Thursday morning of each month lead by Philippa. They are a friendly group who take it in turns to choose a book for discussion. To find out more ring 023 8045 8752 or drop in to see us. Leave your name and contact details and Philippa will get in touch with more information.

Keep an eye on Facebook for our weekly programme and future special events including children's storytelling.

## HAMBLE-LE-RICE FLOWER CLUB

We meet on the 3rd Monday of every month at 1.30pm in Hamble Memorial Hall.



On 13 March we held our Annual General Meeting to celebrate our 35th Anniversary since the founding of the Club. We had a lovely afternoon with tea and cakes, and a very special Anniversary Cake (see picture of founder member Betty King doing the honours and cutting the cake).



We have an exciting and varied programme planned for the coming year. We start in April with a floral demonstration by a very experienced lady – Christine Evans. This will be held on 17 April at 1.30pm at the Hamble Memorial Hall – do come along and bring a friend.

We are not having a meeting in May because of the King's Coronation. However, we are going to make some small flower arrangements to distribute around the village and surrounding areas for you to pick up and take home. Do look out for them and let us know if you enjoyed one.

We are also having a day out on 12 May to the National Flower Arranging Show at Gloucester Cathedral. There are a few places left on the coach, so if you wish to join us please email me [christine.d.wright@googlemail.com](mailto:christine.d.wright@googlemail.com). Everyone is welcome.

June's meeting is definitely a date for your diary – we have a National Demonstrator (Graham King) coming to give us a spectacular display. This will be held on 12 June at 1.30pm in the Hamble Memorial Hall. Spread the word and bring a friend.

We also run classes on the third Monday of each month at the Roy Underdown Pavilion at the end of Spitfire Way. Beginners: 1pm-3pm and Improvers: 3pm-5pm. Once again, everyone is welcome. Please email me if you are interested and I will send you the details.

Christine Wright, Chairman Hamble Flower Club



**Accountably**  
CHARTERED ACCOUNTANTS

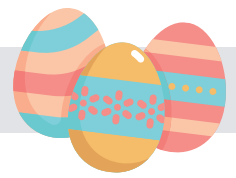
Fixed Price Fees  
Free Initial Consultation  
[www.accountably.co.uk](http://www.accountably.co.uk)  
✉ [enquiries@accountably.co.uk](mailto:enquiries@accountably.co.uk)

Services for Individuals & Local Businesses

Company Accounts  
Tax Planning  
Personal Tax  
Start Ups

☎ 023 8045 3907

# EGG-CELLENT EASTER ACTIVITIES!



## MAKE EASTER MINI EGG COOKIES



### INGREDIENTS

100g butter (softened)

150g soft brown sugar

1 egg

½ tsp vanilla extract

200g self raising flour\*

50g chocolate chips

2 90g packets mini eggs

\* If you don't have any self raising flour you can swap it for an equal amount of plain or all-purpose flour and add a teaspoon of baking powder.

### INSTRUCTIONS:

1. Preheat the oven to 180C/170C Fan/325F and grease or line three baking trays with baking or parchment paper
2. Mix the butter and sugar until light and fluffy.
3. Add the egg and vanilla extract.
4. Mix together until everything is well combined.
5. Add the flour.
6. Use a rolling pin to bash up at least half the mini eggs, and add them to the mixing bowl with the chocolate chips. Stir them in using a wooden spoon.
7. Spoon large dollops of cookie mixture on to your prepared baking trays. Leave space between them to allow for spreading.
8. Place a few whole mini eggs on top of each cookie. Put the baking trays in the fridge for around 30 minutes so the cookie dough can chill.
9. Bake the cookies for 8-10 minutes. They're ready when the cookies have turned golden and flattened down a bit.
10. Remove from the oven.
11. Leave your Easter cookies to cool on the baking tray for a few minutes before putting them on a wire rack to cool completely.

## EASY DIY BIRD FEEDER



Treat the birds this Easter with this easy craft idea. Little ones will love watching the garden birds as they perch on the side, pecking away at the seed. It's a great way to teach children about local wildlife and enjoy a fun afternoon of craft.

Takes 30 minutes

### YOU WILL NEED

- 1 large orange
- 2 kebab skewers
- Bird seed
- String

### WHAT TO DO

1. Cut a large orange in half and scoop out the middle (you can eat this as a snack).
2. Poke a kebab skewer through one side of the orange and out through the other, then poke another kebab skewer through from the other side so the two skewers make a cross in the middle. Little birds can perch on these skewers while they eat the seed.
3. Take two equal lengths of string and tie these onto the skewers on either side so you can hang it up. It might not balance with just one, so be sure to do both.
4. Fill the orange with bird seed, then hang on a branch for the birds to enjoy



# EGG-CELLENT EASTER ACTIVITIES!



## BUNNY AND CHICK SWEETIE JARS



Make these chocolate-filled jars for your children to hide on an Easter egg hunt in the garden.

Takes 1 hour, plus drying time

### YOU WILL NEED

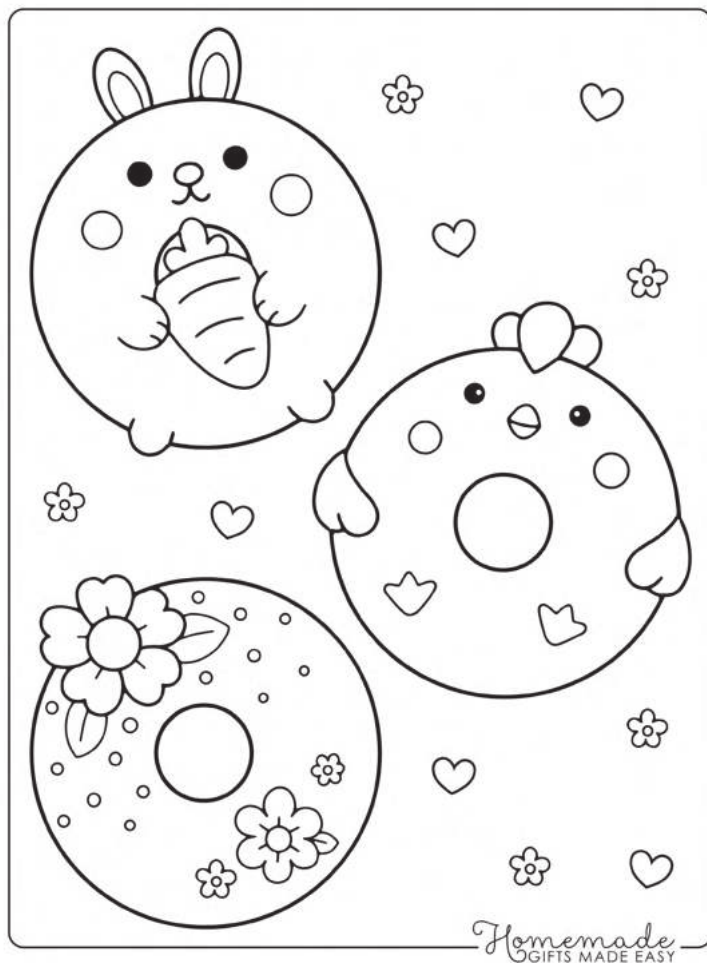
Glass jar with screw lid  
Craft paint suitable for glass  
Permanent marker pens  
Patterned card  
Glue  
Pompom (chick only)  
Chocolate eggs and chocolate coins

### WHAT TO DO

1. Paint the lids and jars, leaving a circle at the front of the jar unpainted. Leave to dry completely before applying a second coat.
2. Once dry, draw faces on the front to make a bunny or chick using permanent marker pens.
3. Cut out bunny ears or chick party hats from patterned card. Glue pompoms to the party hats, if needed. Bend back a 1cm-wide flap of card at the base of each ear or party hat and glue to the jar lids. To finish, fill the jars with chocolate.



COLOUR  
ME!



### CHILDREN'S FUN DAY 'CORONATION' theme



Sunday 14<sup>th</sup> May 2023  
from 12:00 midday  
Memorial Hall, Hamble

PETTING FARM, FACE PAINTING,  
CHILDREN'S CRAFT, STALLS,  
RAFFLE, BEER/PROSECCO TENT

CROWN DECORATING  
COMPETITION

Bring your own picnic for HVP's  
King's Coronation Street Party

All Children Welcome

**\*\*CHILDREN TO BE ACCOMPANIED BY AN ADULT\*\***

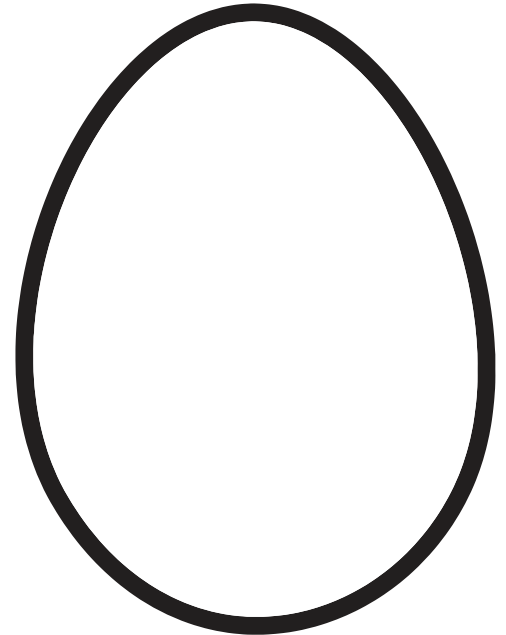
Admission Price: £5.00 per family  
Tickets available from HVP





# DRAW YOUR OWN EASTER EGG

USE COLORS, LINES, SQUIGGLES TO DRAW  
YOUR OWN BEAUTIFUL EASTER EGG



THIS IS \_\_\_\_\_ 'S EASTER EGG

## UPCOMING DATES

### Upcoming Parish Council Meetings at the Roy Underdown Pavilion

#### Asset Management Committee

Monday 3 April  
7pm

#### Full Council

Tuesday 11 April  
7pm

#### Planning Committee

Monday 24 April  
7pm

### Hamble School and Hamble Primary School Easter Holidays 3 April – 14 April

### Run Rabbit Run 1 – 16 April

At Royal Victoria Country Park.  
Self guided trail around the park.

### Bats in The Belfry Storytelling Session 4 – 5 April 10am – 11am

At Royal Victoria Country Park.

### Egg-ceptional Bricks 5 – 6 April 11am – 4pm

At Bursledon Brickworks.  
Family fun with Lego bricks.

### Boccia In The Field 5 April 1.30pm – 2.30pm

In the field outside Roy Underdown Pavilion (ages 5-16)

### Hamble Local History Society Meeting 6 April 7.30pm

At Hamble Memorial Hall (Rear Hall)

### Easter Sunday Service 9 April 10am

At St.Andrew's Church

### Royal British Legion Meeting 10 April 7pm

At Hamble Club.

### Hamble Ladies Group Meeting 11 April 2pm

At the Priory Centre.

### Basketball 13 April 1pm – 3pm

On the Roy Underdown Court (ages 5-16)

### Spring Steam Up 23 April 11am – 4pm

At Bursledon Brickworks.

### Walk and Talk Hamble 26 April 10.30am – 11.30am

At The Mercury Library.