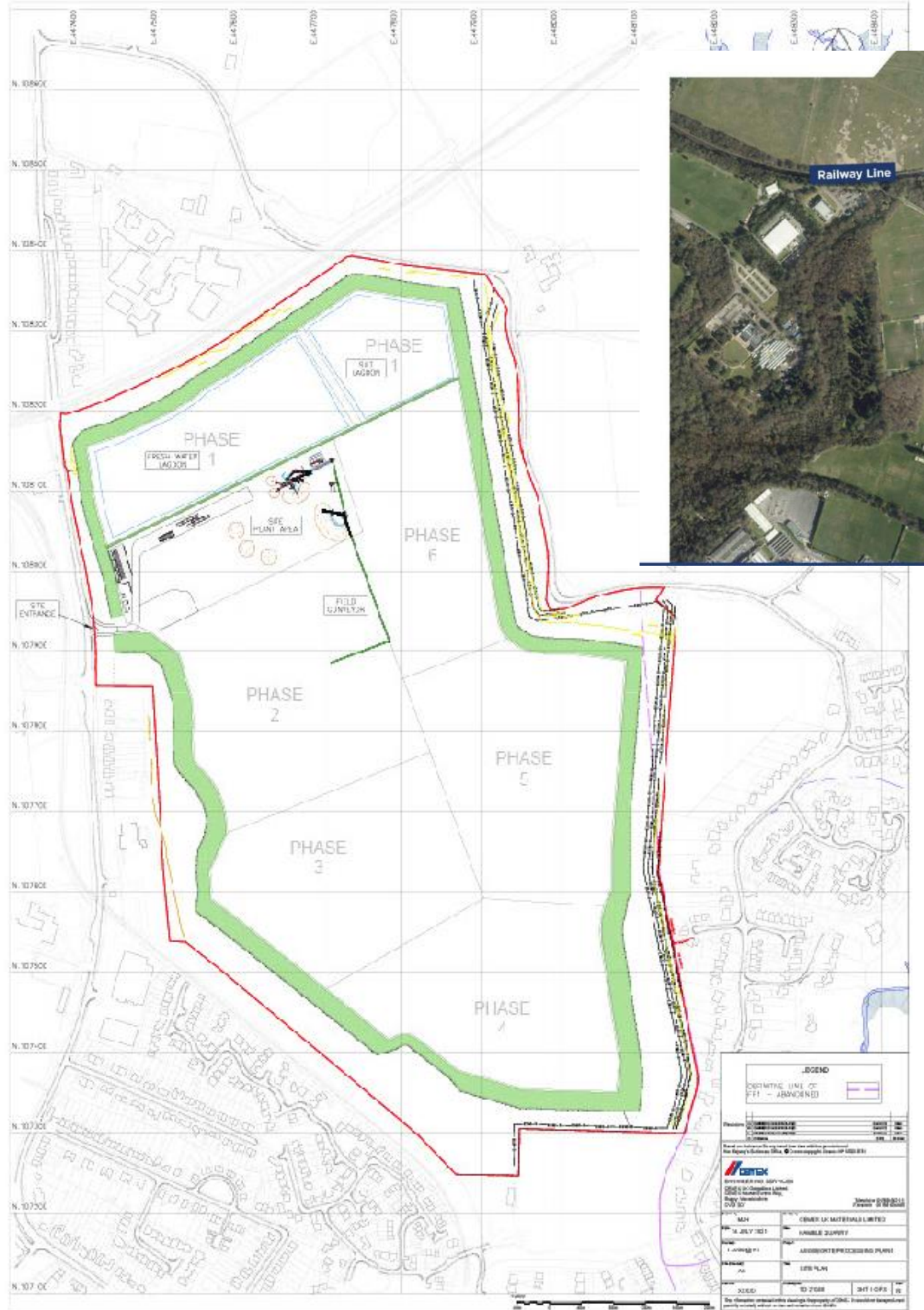
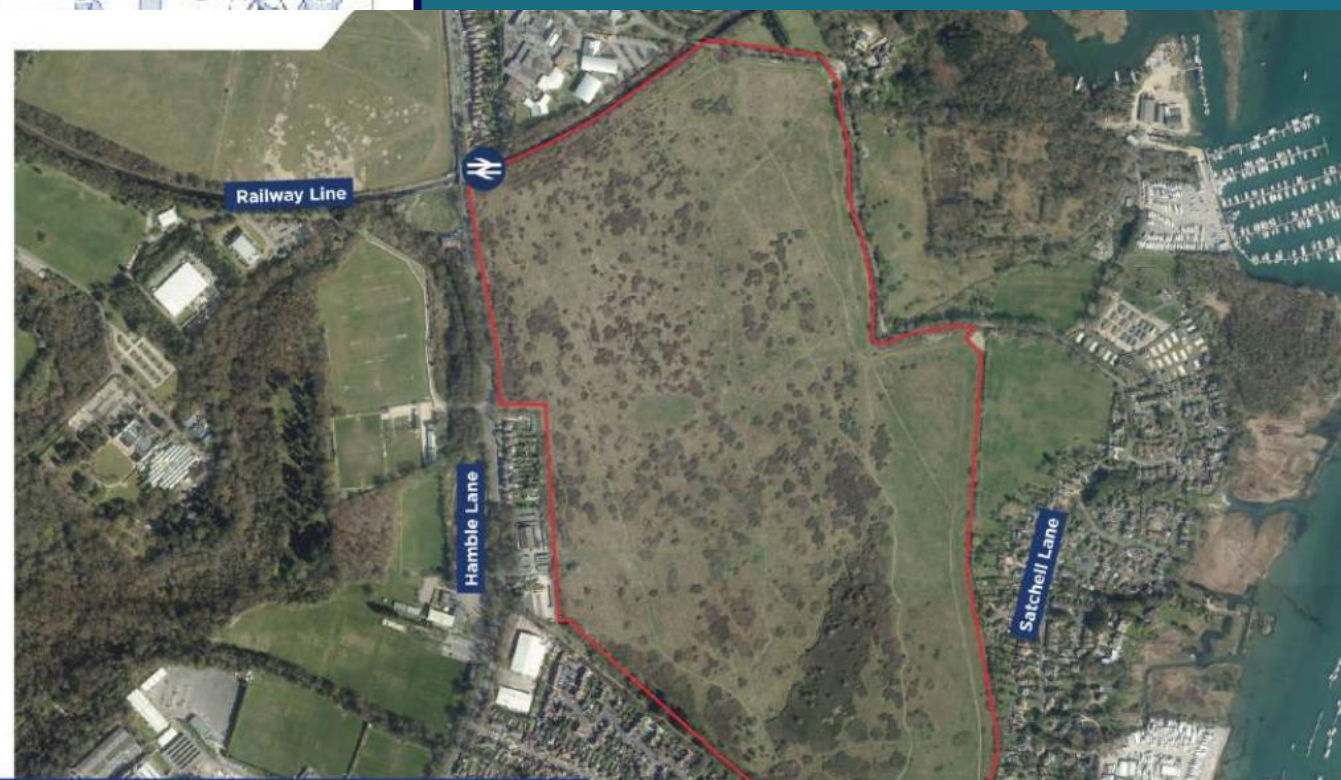


HAMBLE PARISH COUNCIL

CEMEX PUBLIC MEETING PRESENTATION

Wednesday 11 January 2023 from 1pm to 2.30pm

Thursday 12 January from 7pm to 8.30pm



PUBLIC MEETING AGENDA

PART 1 35 minutes

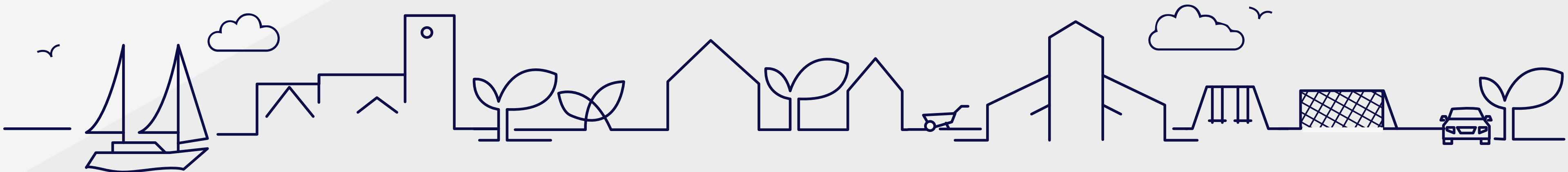
Overview of Cemex's
application so far

PART 2 40 minutes

Open forum
questions and
audience discussion

PART 3 15 minutes

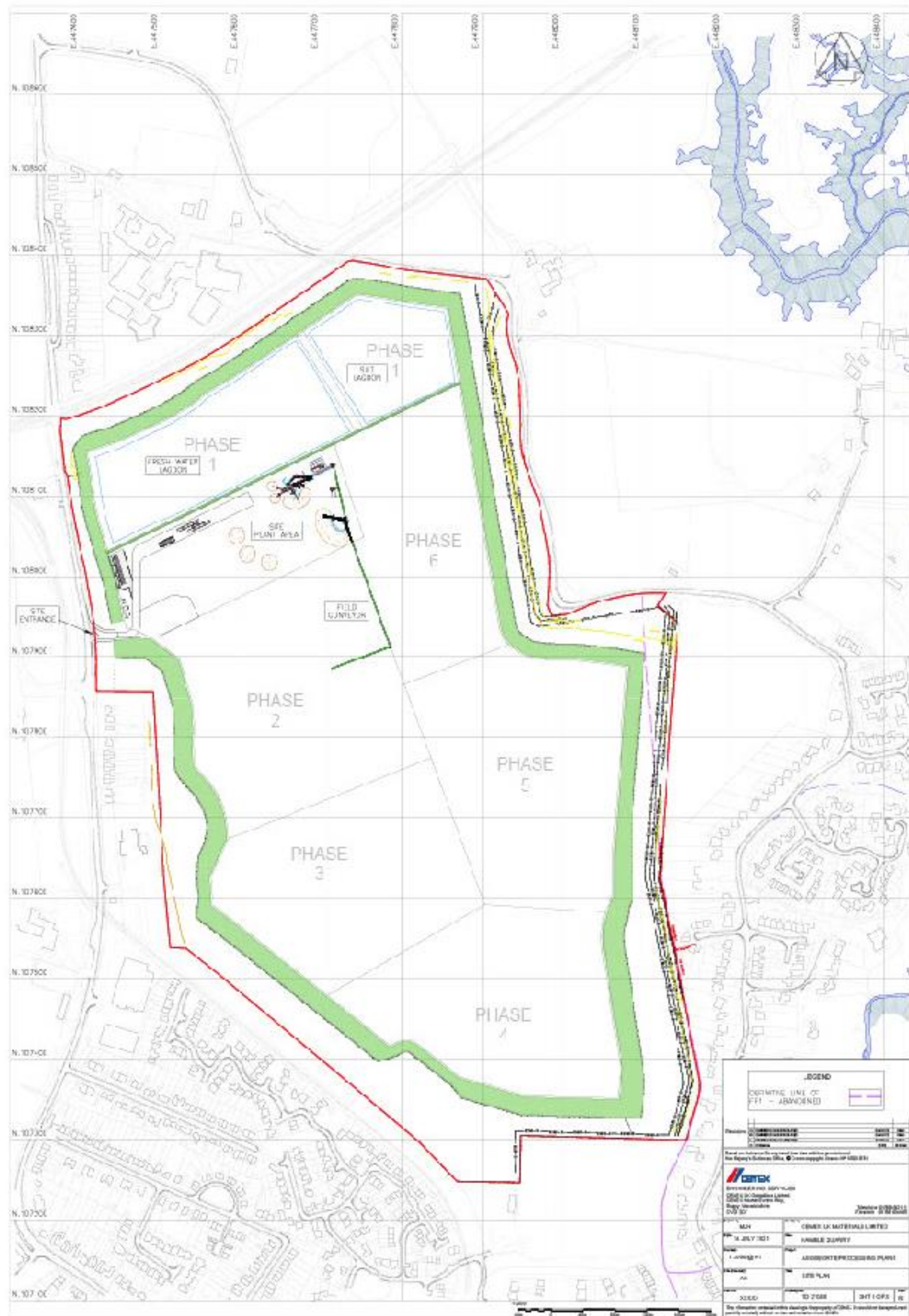
Next steps



HAMBLE PARISH COUNCIL

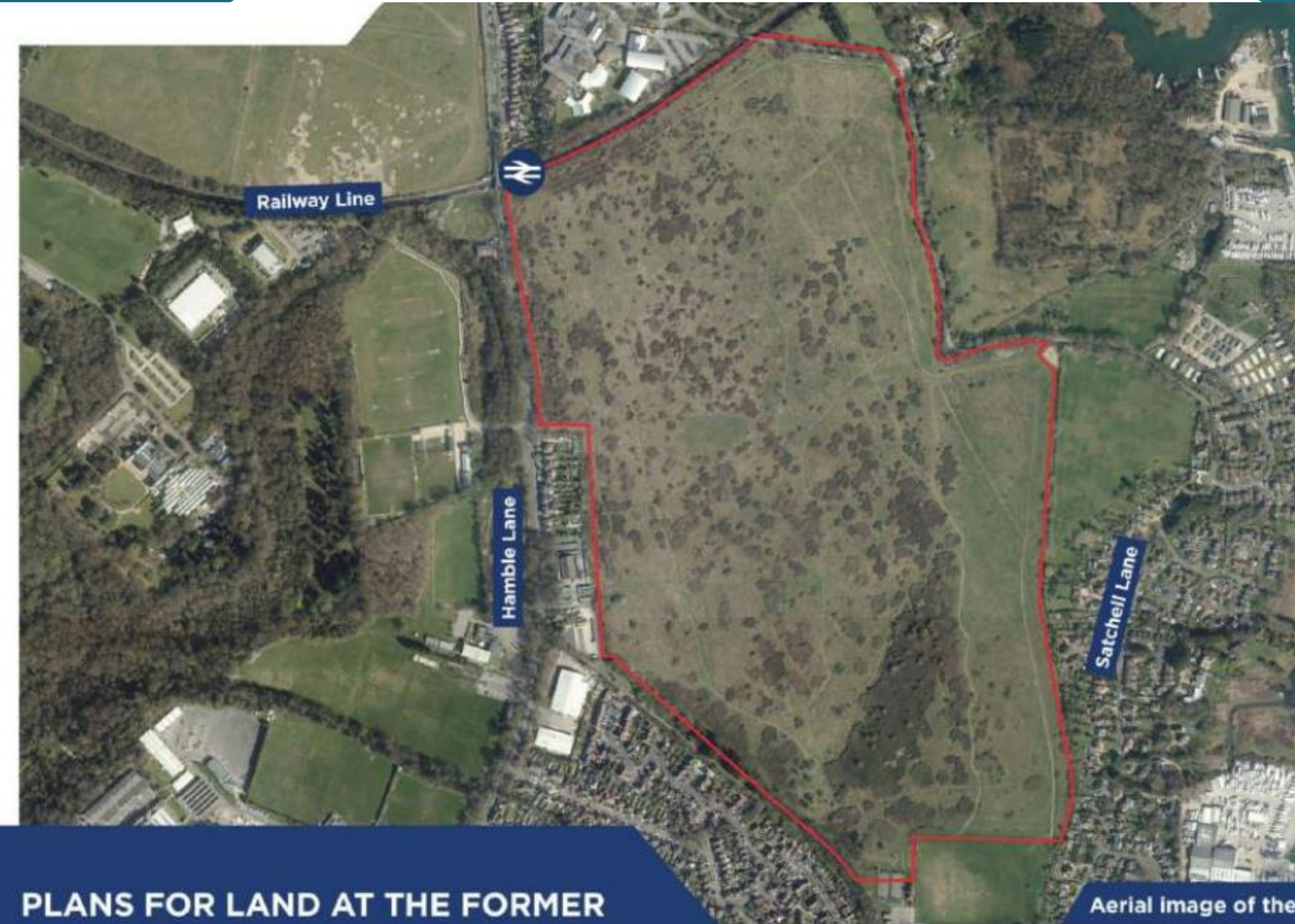
Part 1

Overview of Cemex's
application so far
35 minutes



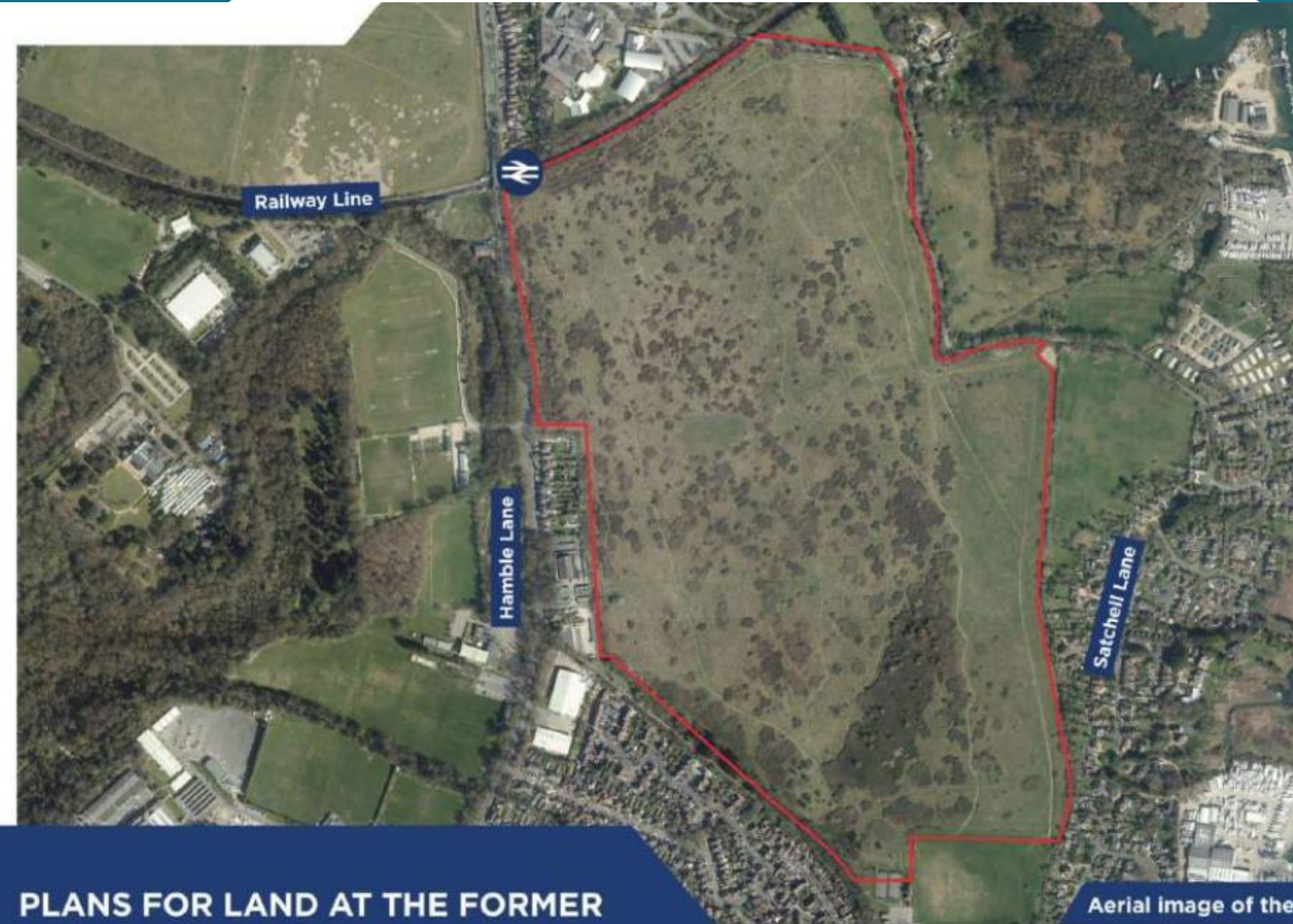
INTRODUCTION

- Simon Hand – Councillor, Chair of the Parish Council
- Amanda Jobling – Clerk of Hamble Parish Council
- Steve Tilbury – Planning Consultant
- Mark Venables – Councillor, Lead for Transport



HPC CEMEX COORDINATION GROUP

- Chris Jones – Councillor, Chair of Cemex Coordination Group
- Michelle Nicholson – Councillor, Chair of Communications Working Group
- Mark Venables – Councillor, Transport Lead
- Ian Underdown – Councillor, Chair of Planning Committee
- Amanda Jobling – Clerk of Hamble Parish Council



CEMEX: THE APPLICATION SO FAR

Steve Tilbury – Planning Consultant for HPC

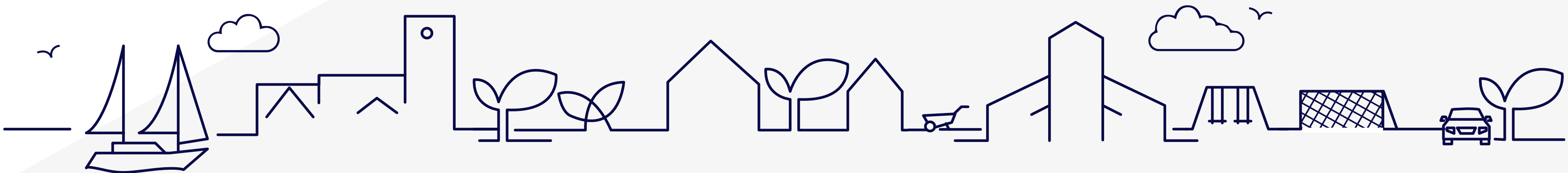
- What stage are we currently at in the process, the current evidence and what it means

Mark Venables – Councillor, Transport Lead

- Transport issues we have learned so far



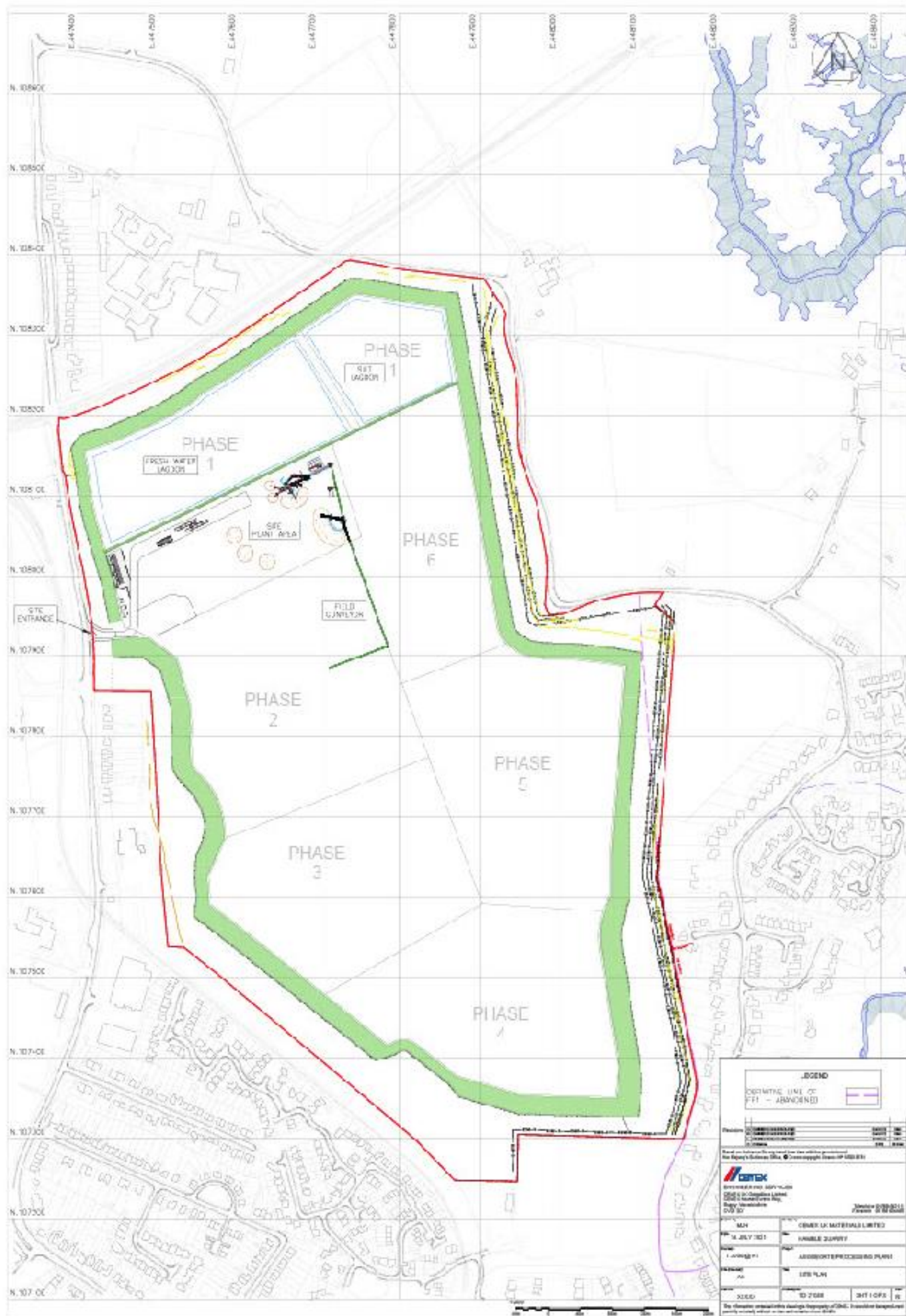
Image from Cemex's documents



HAMBLE PARISH COUNCIL

Part 2

Open forum
questions and
discussion
40 minutes



LET'S HEAR FROM YOU – Open Forum Questions and Discussion

What questions
or observations
would you like
to share?

How could this
quarry impact
your daily life?

What concerns
you most?



To ask a question – raise
your hand or come to the
front of the meeting room



LET'S HEAR FROM YOU – Write out your thoughts...

Focus on 1 or 2 issues which you feel will impact you the most:

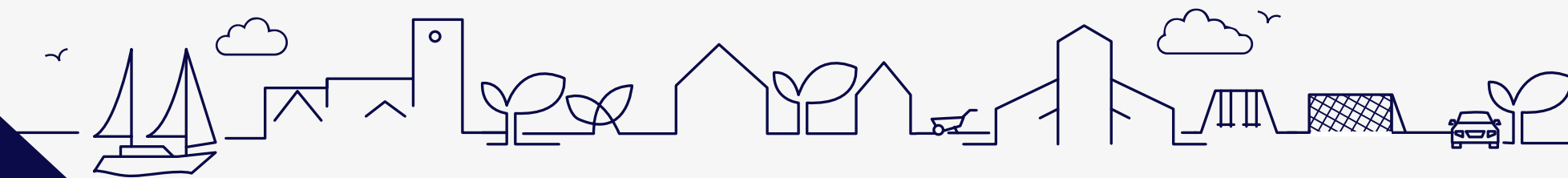
- Transport / Traffic Congestion*
- Road Safety*
- Air Quality
- Flooding and Water run-off (Hydrology)
- Environment/Biodiversity
- Impact on Local Businesses
- Impact on Quality of Life

In short bullet points:
How would a quarry
on Hamble Airfield
impact your day-to-day
life?

ONLINE IMPACT SURVEY

<https://cemex.hambleparishcouncil.gov.uk/impact/>

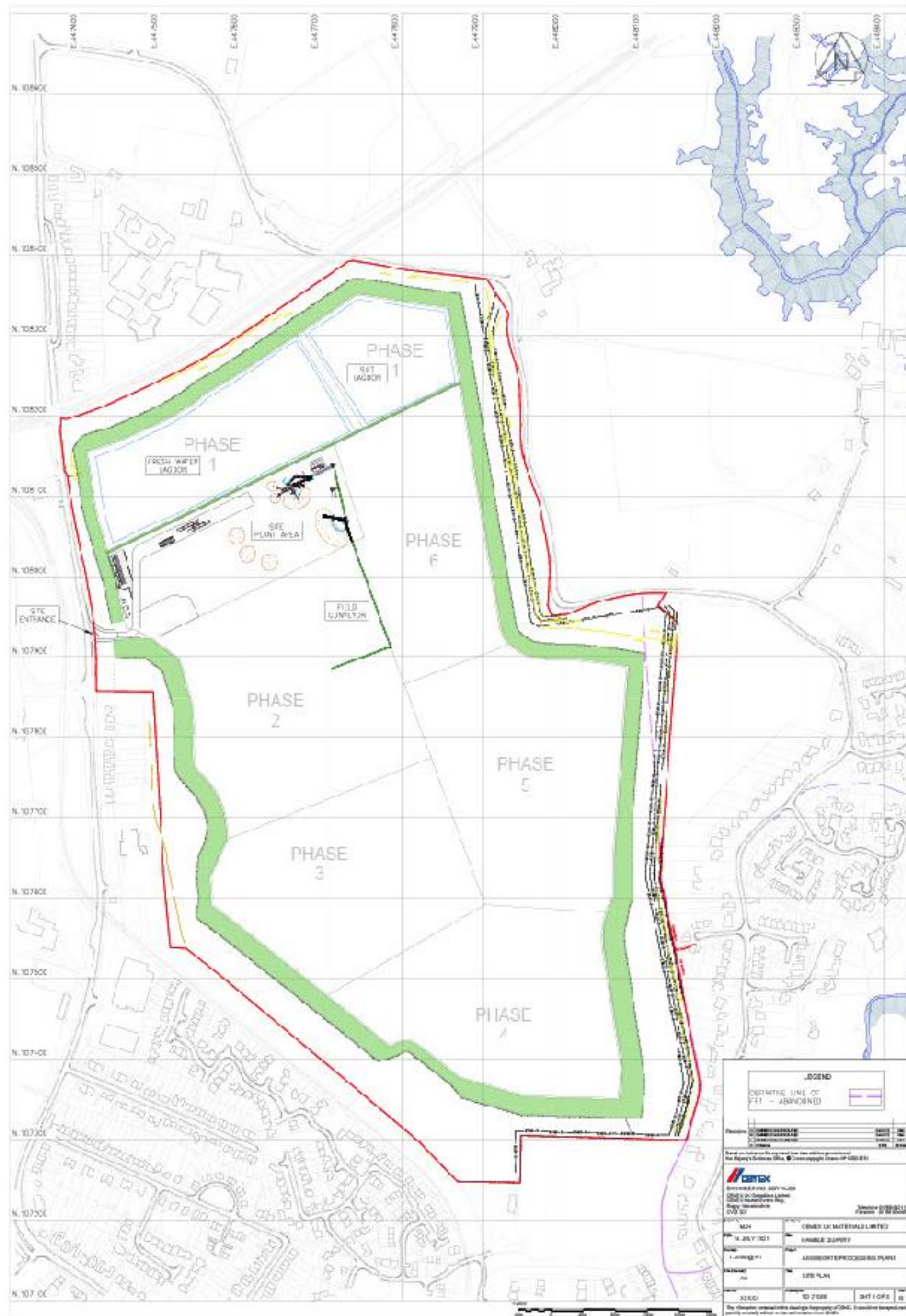
You can share your thoughts
after the meeting by survey
using this from QR code



HAMBLE PARISH COUNCIL

Part 3

Next steps
15 minutes



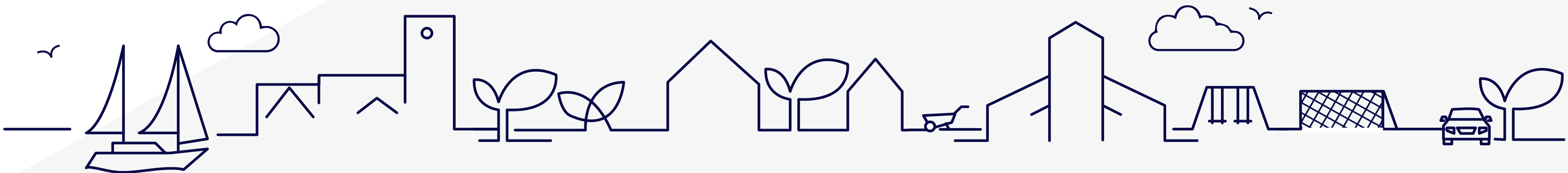
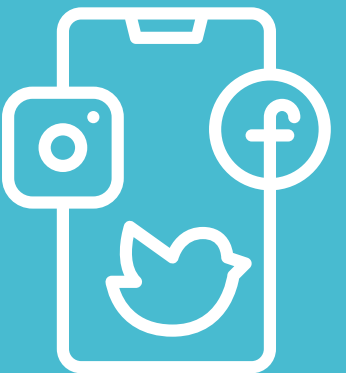
KEEPING YOU INFORMED

Our pledge to you...



- We will carry on supporting you
- Make sure you have the information you need to submit a relevant objection
- Keep you informed at every stage of the process

- Carry on putting out our messages via:
 - Newsletters and posters in our notice boards
 - HPC website
 - Social Media: Facebook and Instagram



NEXT STEPS

How to object

Send your Comments to Hampshire County Council:

Online:

<https://planning.hants.gov.uk/Planning/Display/HCC/2021/0787>

Email:

planning@hants.gov.uk

Write to:

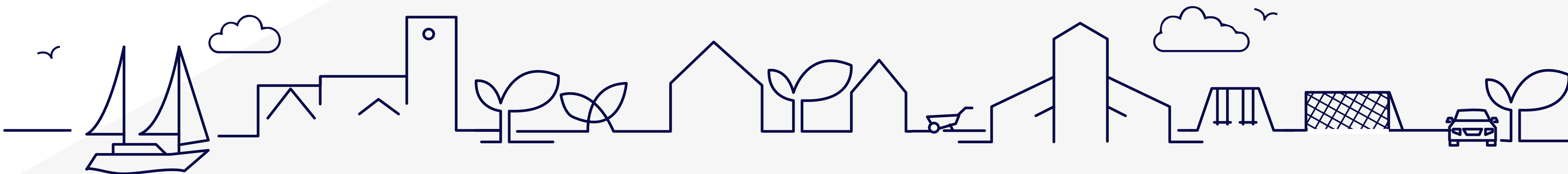
Hampshire County Council - Strategic Planning, Economy, Transport
& Environment Department

Elizabeth II Court West, The Castle, Winchester, SO23 8UD

Quote Ref: HCC/2021/0787

How did you find today?

Look out for a feedback form
by email... or collect one at
the door and return to the
HPC office



Thank you for your time

