



Westfield Common photo by the Parish Clerk, bird photos by Peter Hyde

WELCOME!

Hey! It's getting warmer, the days are longer, and the evenings lighter. It's a great time to get out and about – in your garden, in Hamble, or further afield. You'll see that getting active and enjoying our lovely part of the world is a theme that recurs amongst the other news items in this edition.

Covid 19 has swept the village recently with so many people laid low, including many of our staff and councillors. I hope that everyone is on the road to recovery by the time you receive this edition. We have some top tips on how to get the best care from the NHS at this difficult time on page 2.

Despite Covid, we have been busy on your behalf. We have been preparing for the Jubilee, continuing the programme of planting, and the refurbishment work at Roy Underdown Pavilion has progressed. By the time you read this, we will have replaced the old lights in the building and the floodlights with LED bulbs. We hope to do our bit for the climate emergency, to reduce our costs and keep council tax charges down.

Next season we will be welcoming a new sports team to College Playing Field. We will be working with Solent Sports, an organisation focused on making sport accessible to everyone regardless of age, fitness, or ability. Solent Sports is now one of the biggest recreational football providers in Southern England. They play in over 15 locations but hope that Hamble will become their 'home', drawing in people from the village and surrounds. They will be starting with a focus on girls and women's football so if you want to get involved you can find them on Friday night at The Hamble School or contact them via their website.

Lastly, we have agreed the theme for the Annual Parish Meeting on Thursday 12 May at 7pm, which will be looking forward to the type of village we want Hamble to be by 2050. Starting to think forward will not only help us as we plan services but will also help when we are faced with challenges, such as the Hamble Airfield application. People have suggested a variety of uses for the Airfield in their application responses – from a solar farm to a designated Village Green. Let's capture these ideas and look forward.

The Meeting will be held at Hamble Aerostructures who have kindly given the room free of charge for the event. The final agenda will be confirmed nearer the time so check the website, social media, and the noticeboards and once you know, let others know just in case!

I hope to see as many of you as possible on 12 May!

Cllr Simon Hand

Chair of Hamble Parish Council

In This Issue

Annual Parish Meeting.....	3
Hamble Airfield Update.....	5-7
Community News.....	8-12
Upcoming Dates.....	12

PARISH COUNCIL CONTACT DETAILS

COUNCIL LED NEWS

FIRST PARISH COUNCIL DROP-IN CLINIC A SUCCESS

Councillors and staff were available to meet residents at our first drop-in clinic, which we held on Wednesday 13 April 2022. It was a great opportunity to discuss those issues that are important to you in a relaxed and informal setting.

Issues that were raised included:

- The popularity of the hard courts at College Playing Fields means that the space is often busy, especially now the lighter evenings are drawing in. We were asked to consider what could be done to reduce noise from the site after 9pm and whether the car park could be closed to prevent loud music being played from cars after 9pm. If you use the facilities regularly, what do you think? Let us know so we can improve the use of the space and protect residents' peace and quiet.



Cllr Andy Thompson
Chair of
Assets Committee

- We were also asked to erect signage on the Rail Trail to discourage motorbikes from using the route. There was a problem last year with a motorbike using the path – but was stopped when the Police confiscated the vehicle as it wasn't roadworthy. We will look into the possibility of erecting signage over the next few weeks.

- Foreman Homes' Planning Application has now gone to the Planning Inspector for Appeal. You can make representations to the inspectorate until Thursday 5 May (<https://acp.planninginspectorate.gov.uk>).



We were asked if the Council would be making a submission – which we will. We objected to each of the applications, and the Hamble Parish Council Planning Committee is considering any new policy objections following the adoption of Eastleigh Borough Council's Local Plan, Highways, design, and sustainability.



Cllr Ian Underdown
Chair of
Planning Committee

- Access to health services – at a time when the NHS and primary care is under pressure, we were asked what residents can do if they need help. Advice from Dr Zaid Hirmiz, GP and Clinical Director for South East Hampshire at the Hampshire and Isle of Wight Integrated Care System is:
 - o Get vaccinated against Covid 19 – the best

form of protection for you and your loved ones.

- o Be ready to get loved ones home from hospital as soon as they're ready to leave – it's better for them, and frees up beds for others.
- o The Emergency Department (ED) is for emergencies, not convenience.
- o Not sure what help you need? Contact 111 online and let the experts help you.
- o Urgent treatment centres are best for minor injuries and have x-ray facilities.
- o Use the expert help available on every high street, at our network of pharmacies.
- o Your GP practice has online access and a range of expert help – a convenient option.
- o Look after yourself – being ready to care for yourself can be a great help, and there are some great tips here.
- o Make use of online help – try www.nhs.uk for health and medicines advice, and www.what0-18.nhs.uk if you are concerned about an unwell child.



We will be looking at running further drop-in clinics in the future and will let you know dates and times.

LOOKING FOR A SPACE TO HIRE?

Look no further! Roy Underdown Pavilion is an ideal space for children's parties, team building days, interviews, training sessions, meetings, family gatherings, corporate events, and community groups.

The cost of hire is just £20 per hour for the first hour and £10 per hour thereafter, and a refundable deposit of £50 is all we need to secure the booking.

Visit the Parish Council website to check out availability, make a provisional booking and read the terms and conditions



Roy Underdown Pavilion Available for Hire!

- Children's Parties
- Meetings
- Corporate Events
- Community Groups

To Book,
Call 023 8045 3422

COUNCIL LED NEWS CONTINUED

ANNUAL PARISH MEETING: THURSDAY 12 MAY, 7PM – 8.30PM

Join us for our Annual Parish Meeting on Thursday 12 May 2022 at Hamble Aerostructures to discuss your Vision for Hamble 2050.

What's on the agenda?

- Hamble 2050 – Your Vision for Future Hamble
- Plans for the Platinum Jubilee
- Hamble Airfield/Cemex Planning Application – Request to establish a Residents' Committee

This is a really good opportunity to look forward and start to give some thought to the Hamble we would like our children and grandchildren to enjoy. While some of our aspirations for the village are inevitably bound to the outcome of planning applications and local plans, there is a lot that we can accomplish simply by having a vision of the kind of place we want Hamble to be. These thoughts, ideas and initiatives can then be used to plan future services and resources.

This Meeting is about you as Hamble residents, and the kind of village you would like the next generation to inherit. We hope to see as many of you there as possible.

HAMBLE 2050: QUESTIONS TO CONSIDER

- Would you like to see more young families living in Hamble?
- Would you like to see more affordable housing?
- What additional amenities/facilities do you think the village needs (if any), and how should these be funded?
- What measures or initiatives could the village introduce to become more sustainable and environmentally responsible?
- How can we nurture our sense of community?
- How can we bring together people of different generations?
- How could vulnerable residents be better supported in the future?
- Would you like to see more leisure or recreational areas or facilities? What would these look like?
- What impact would you like to see businesses having on the local area? Do you want to see businesses playing a larger part in community engagement? Do you want Hamble to host fewer/more businesses?

HAMBLE 2050: YOUR VISION FOR FUTURE HAMBLE

“Change is inevitable whether we like it or not. If evolution does not happen, then eventually the organism or organisation becomes unfit for purpose. What is important is that we acknowledge that change, like the tide which King Knut demonstrated on Southampton Water, is inevitable but that we should seek to manage it so that desired objectives are achieved.

Acknowledging and managing change was brought into focus for us when considering the restoration proposals in the planning application for gravel extraction on the Airfield. If granted, we would wish to have the best possible outcome for the village when the gravel has been extracted which would be achieved by appropriate planning conditions. If refused, there is a large site in the village with development potential. The current Local Plan provides some protection, but a review of the plan has to start next April, and we may well not have the protection of the site being allocated for minerals as the Mineral Plan is overdue for review.

In either scenario we need to establish a long-term vision for the village. Do we want a 'balanced' community, a retirement community, a community based on the marine sector? What are the risks in being dependant on one industry? What facilities are we missing, what facilities would we like? The intention of including this item on the Annual Parish Meeting agenda is to start a debate, not provide answers.

We look forward to discussing this with you on 12 May, but in the meantime, please do email your thoughts over to us.



Cllr Sheelagh Cohen (left above)
sheelagh.cohen@hambleparishcouncil.gov.uk



Cllr Chris Jones (right above)
chris.jones@hambleparishcouncil.gov.uk

COUNCIL LED NEWS CONTINUED

JUBILEE REGAL ROUTE ACTIVITY: MAKE YOUR WAY ALONG THE REGAL ROUTE!

To celebrate the Queen's Platinum Jubilee, we've created a Regal Route around our lovely village for our younger (and young at heart!) residents to follow. The route will be marked by crowns placed at notable locations around Hamble, each of which will have some letters on it – simply follow our map of the village to find all the crowns, put the letters together, and tell us what they spell out. The first 30 people to get the code right will win a packet of Jubilee seeds!

We'll be publishing the map of the crowns towards the end of May, so that you can follow the Regal Route over the Jubilee Bank Holiday weekend. Keep an eye on the Hamble Parish Council Facebook page, noticeboards around the village, and the HPC website for a link to the printable map. We're also hoping to distribute them via the local schools and from the HPC Parish offices.

What do you have planned for the Jubilee? Let us know via email or the Contact Page on our website, so we can add your event to our interactive guide. We'll also be uploading an event Toolkit to our website to help you organise your own street party, tree planting, beacon lighting, or Big Lunch.

IMPROVEMENT WORKS CONTINUE

Improvement works are continuing at the Cemetery, with a marble bench recently installed to provide a place for quiet reflection. This bench was generously donated by a local family, and will be surrounded by a metal trellis and climbers.



Summer plants will be going into the tiered planters at the Foreshore, Square and Coronation Parade in the coming weeks. We plan to plant some lovely summer flowers including fuchsias, ivy, trailing lobelia and petunia, and geraniums.

FULL TO THE GUNNEL WITH FLOWERS GROWING (WITH APOLOGIES TO ROBERT FROST!)

Hamble now has our own Flower Boat! The Estates Team have very creatively filled an old abandoned and unseaworthy boat with an array of drought-resistant grasses and plants to bring a little sunshine and colour to the Foreshore. Located on the grassed area next to the car park, the boat has been planted with Phormiums, Festuca Glauca Elijah Blue, and Miscanthus Sinesis Gracillimus.



MDL Marinas has since donated a second spare dinghy, which will also be located at the Foreshore. Hamble Aerostructures have kindly part-funded the plants which will go into our second Flower Boat – our thanks to both companies for their help and support.

With our Flower Boat having been so well-received, we may be on the lookout for other old, retired boats to decorate areas of the village. If you have a boat which is no longer fit for the water which you would be willing to donate or to fill with flowers, please do get in touch.

CALLING ALL BLOGGERS! WOULD YOU LIKE TO CONTRIBUTE TO FUTURE NEWSLETTERS?

We're always on the lookout for new and interesting content relating to community groups, activities, and initiatives in Hamble. If you'd like to contribute on any subject which may be of interest to our residents, please get in touch – danielle@smartmarketinguk.com

Newsletter Contribution Deadlines

June: 16 May

July: 20 June

HAMBLE AIRFIELD UPDATE

UPDATE ON THE HAMBLE AIRFIELD PLANNING APPLICATION

All statutory consultee responses have now been received in respect of the Hamble Airfield planning application from Cemex, and can be viewed here: bit.ly/3xDSW3F



Included within these documents are responses from Hamble Parish Council, Eastleigh Borough Council, Natural England, Network Rail, and various Hampshire County Council departments including Highways, Flood and Water Management, Ecology, and Archaeology.

Alongside these statutory responses were over 1,000 responses from the public – which were overwhelmingly against the proposals.

Having reviewed the feedback from the various consultees, Hampshire County Council has now sent Cemex a list of additional information that they will require to properly assess the application (Regulation 25 letter). This letter can also be found via the link above.

What happens next?

At this point, things are likely to go a little quiet, while Cemex gathers the information required by Hampshire County Council. To this end, you may see people contracted by Cemex working on the Airfield or elsewhere throughout the village, obtaining data or samples. This process is likely to take several months, at which point we will get another opportunity to comment on their proposals.

The Parish Council (with the assistance of our specialist consultant) continues to research and investigate those areas which we believe offer the very best opportunity to have the planning application denied. You can read more about these key arguments in the response we sent to Hampshire County Council. Although our updates may be less frequent over the coming weeks, please do not think that this is because we are not working hard on your behalf.

You are very welcome to attend our Full Council meetings on the second Monday of every month, where we will continue to provide updates on the application, and to attend our Annual Parish Meeting on Thursday 12 May where the future of the Airfield is on the agenda for

discussion. You can also email us at any time with queries, or contact us via the 'Ask a Question' page on our website: bit.ly/3xGSnpx



What can you do?

This is likely to be a long process taking several months, and so it is important that we focus all of your terrific community efforts at the point at which it will have the greatest impact. This is likely to be when Cemex has sent Hampshire County Council all of the information required for the application to be properly assessed. At this stage, we will need you to make your voices heard and opposition known. Until then, please keep an eye on the Hamble Parish Council Facebook page, our website, and future issues of this newsletter, so that we can keep you updated on progress.

We have also been asked by some members of the community whether the formation of a community-led action group (like RAGE) would be worthwhile. While this is not something the Parish Council would be directly involved in, it has been added to the agenda for the Annual Parish Meeting on 12 May for discussion. If you would be willing to get involved in a co-ordinated community-led campaign, please do come along.

STATUTORY RESPONSES RECEIVED: FURTHER INFORMATION REQUESTED

A number of statutory consultees have asked Cemex to provide additional information so that they and Hampshire County Council (HCC) can properly assess the Hamble Airfield application.

Among the consultees who have requested further data are:

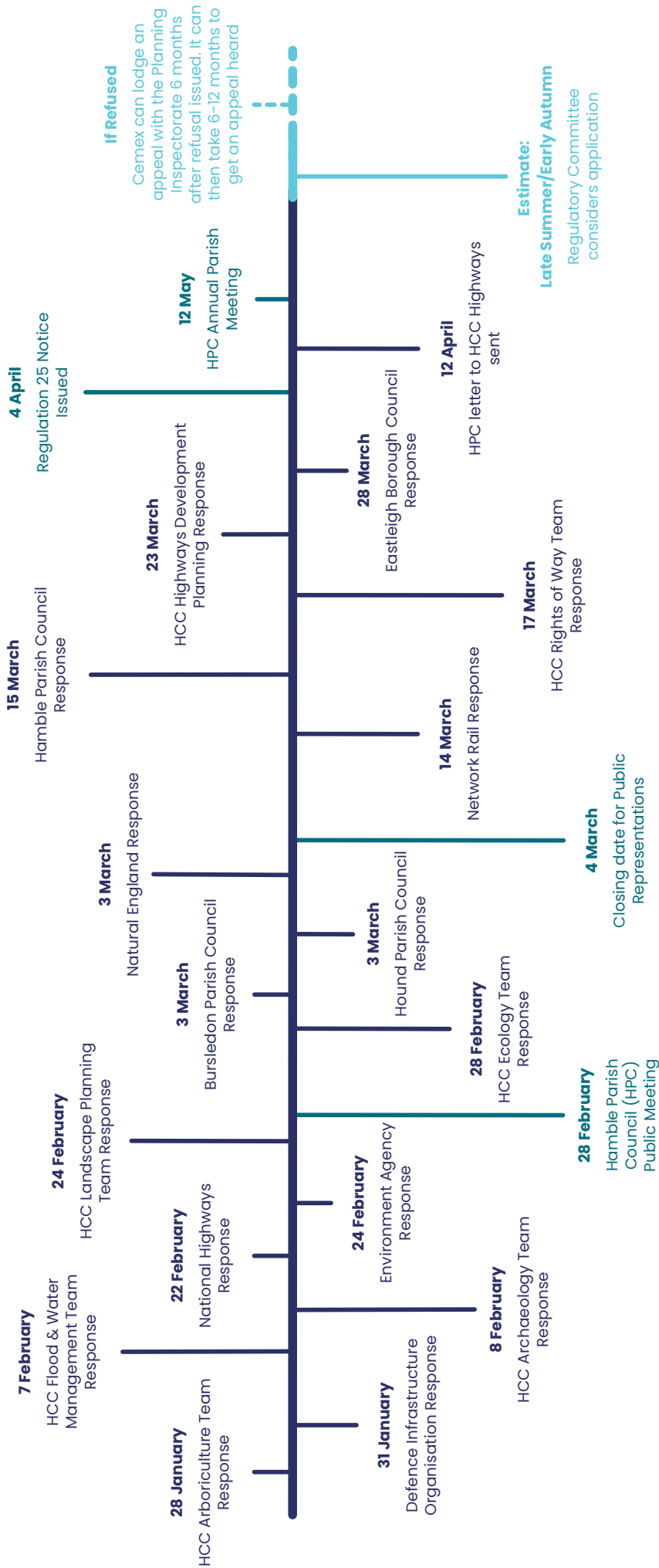
- Flood Authority
- County Archaeologist
- HCC's Arboriculture Department
- The Environment Agency
- HCC's Ecology Team
- HCC's Landscape Team
- Natural England
- HCC's Rights of Way Department
- HCC's Highways Department



Details of their requests can be found in the Regulation 25 letter sent to Cemex: bit.ly/3MII7IJ

HAMBLE AIRFIELD UPDATE CONTINUED

Hamble Airfield Planning Application Response Timeline



HAMBLE AIRFIELD UPDATE CONTINUED

HAMBLE AIRFIELD PLANNING APPLICATION: WORKING GROUPS

As part of our response to the Hamble Airfield Planning Application, we have set up three Councillor-led working groups to examine specific areas of Cemex's proposals. Please find below details of the members and responsibilities of each group. Should you have any questions relating to the application or would like to discuss any of the working groups' activities, please feel free to contact working group members directly.

1. Infrastructure Working Group

The Infrastructure Working Group is examining the impact of the mineral extraction process in relation to highways, rail, water quality, biodiversity, and climate change.



Members (photos left to right):

- Malcolm Cross
malcolm.cross@hambleparishcouncil.gov.uk
- Trevor Dann
trevor.dann@hambleparishcouncil.gov.uk

2. Operational Impacts Working Group

The Operational Impacts Working Group has been tasked with examining the impact of the mineral extraction process on neighbouring properties and residents, encompassing areas including noise, dust, flood assessment, and localised water issues.



Members (photos left to right):

- Michelle Nicholson
michelle.nicholson@hambleparishcouncil.gov.uk
- Sarah Lehneis
sarah.lehneis@hambleparishcouncil.gov.uk

3. Restoration Working Group

The Restoration Working Group is investigating the proposals relating to the site upon completion of the gravel excavation, and includes areas such as public access, ownership, and carbon neutralising measures.



Members (photos left to right):

- Sheelagh Cohen
sheelagh.cohen@hambleparishcouncil.gov.uk
- Chris Jones
chris.jones@hambleparishcouncil.gov.uk

Planning Committee

The Planning Committee will keep a watching brief on the work of the groups and the progress of the application. It will make recommendations to Council on key aspects of the application and the Council strategy in dealing with it. The Committee meets in public (usually the fourth Monday of each month) and has a public session which residents can use to raise issues and concerns.



Members (photos left to right):

- Ian Underdown (Chair)
ian.underdown@hambleparishcouncil.gov.uk
- Andy Thompson
andy.thompson@hambleparishcouncil.gov.uk
- Tony Ryan
tony.ryan@hambleparishcouncil.gov.uk
- Debbie Rolfe
debbie.rolfe@hambleparishcouncil.gov.uk

Plus:

- Sheelagh Cohen
 - Trevor Dann
 - Michelle Nicholson
- (photos and contact details shown in previous groups)

COMMUNITY NEWS

UPDATE FROM THE ALLOTMENT CO-ORDINATOR

We are now past mid-April and it is an exciting time at the allotment. Over the last years with Covid and more recently the cost-of-living crisis, growing your own fruit and vegetables has become very popular and it is a hobby out in the fresh air that is very rewarding. The ingredients required are plenty of enthusiasm and time.

Every allotment is different, and part of the enjoyment is designing your own plot and annually deciding what to grow and where to locate it. You can be creative with your own space and can structure your plot so you can manage it easily with the time that you have available.

The question facing all allotment holders is when to sow crops.

HAMBLE-LE-RICE FLOWER CLUB

We are all very pleased with the super weather we've enjoyed in recent weeks, which has allowed our gardens to spring into life.

Our next meeting is on Monday 9 May, when we will be practising making tied bunches for distribution around the village. If you find one, please take it home and enjoy it, and maybe think about joining us in the future.

On Monday 13 June we are going on a coach trip to visit a lovely lady called Pam Lewis. We shall have a guided tour of her beautiful garden, followed by a two-course lunch, a demonstration in the afternoon, and tea and cake to finish – it should be a great day out. There are a few places left, so if you would like to join us, please let me know (members: £48; non-members: £55).

Our monthly meetings at the Memorial Hall are the second Monday of every month at 1.30pm and we have classes at the Roy Underdown Pavilion on the third Monday of every month at 1pm.

New members are always welcome, so why not come along?

Christine Wright (Chairman)
07764 219193

Last April there were more frosts than the rest of the winter as a whole, so fleeces and cloches were required to save the young shoots from the early sowings. High winds and storms were also a factor. The problem with frost is that, as the temperature drops, it can cause significant cell shrinkage and rapid freezing can cause the plant cells to burst.

One of the strategies is to plant later (when the risk of frost has passed) which has the advantage of warmer outside air temperatures and soil temperature and there is also a water offset (less water used for growing).

Potatoes, sunflowers, peas, carrots, radishes, beetroot, and parsnips can all be grown this month, directly sown outside in beds. Tender plants may need to be protected and sown under glass. It is also a good time to net fruit bushes, like gooseberries before they are eaten.

WHO KILLED THE HOLIDAY REP?

If you enjoy an evening with friends trying to solve a murder mystery whilst enjoying some tasty food and drinks, we have just the night (or afternoon) for you.

'Who Killed the Holiday Rep?' runs from Friday 10 June to Sunday 12 June in Hamble Memorial Hall. Performances commence at 7.30pm on Friday and Saturday, and 3pm on Sunday, and there are prizes for the winner plus the funniest solution.

Paella will be served in the evening and tapas at the afternoon performance. Don't forget it is essential to pre-book any dietary requests. Tickets are £15 and are on sale now either at www.ticketsource.co.uk/hambleplayers or the Box Office: 023 8044 0660.



Hamble Players is a community group, and we are always on the lookout for new members. There are numerous ways to be involved, not just prancing your stuff on the stage! In September we are performing three Cabaret Evenings and of course the pantomime will be here in December. In between shows we organise social activities as well. Contact one of the below for further details.

Chair – Tim Hughes, tim266@hotmail.com
Secretary – Carol Ings, carolings@hotmail.co.uk

COMMUNITY NEWS CONTINUED

HAMBLE LADIES GROUP

Slight panic set in on Tuesday 12 April when we found out that our speaker for the afternoon, Daniel Angus from Solent Minds, Mayfield Nurseries, was unable to attend due to illness.

After a few quick phone calls between the committee members, it was decided that we would set a few quizzes for our members and together with tea and biscuits and lots of chat that is what we did. We tested everyone's brains with some mind-boggling quizzes which included dingbats, a Mary Berry cooking/kitchen quiz, and testing knowledge on sweets.

Our amazing secretary, Joan Fitzgibbon, used her fantastic organisation skills to put together the quizzes and with a few games of Irish Bingo (the bingo game when you don't want your number to be called out) we ended up having a very happy social afternoon.

We are hoping Mr Angus can come along later in the year to talk to us about the amazing work they do at Mayfield Nurseries connected with Solent Minds, helping people with mental health problems.

Hamble Ladies Group is a not-for-profit organisation and every year we donate money to good causes. We will be donating £100 to Solent Minds to help with their funds and will be making more donations in the not-too-distant future.

Our next meeting is on Tuesday 10 May when we have Roy Godfrey from Roysbees coming along to tell us about his work with bees. Roy has been our guest speaker in the past and has a reputation as giving very interesting talks. If you are interested in bees, why not come along as a guest, and enjoy an afternoon with us? We meet at 2pm in the Priory Centre, Hamble.

Bobby Conduit, 023 80 453626

WETWHEELS HAMBLE

Wetwheels Hamble is based at Mercury Yacht Harbour and is already busy on the water this spring, offering its blue health life affirming experiences to people of all ages and disabilities. We are completely not-for-profit and supported by over 40 local volunteers.



We offer a variety of trips from one-hour tasters and experiences where everyone can drive, to full days out on the water taking our adventures further afield. Throughout the year watch out for our Wellbeing Trips to help anyone in the local community boost their mental health (these are funded by money collected by Coop Members locally – if you haven't already selected us as your local cause please do).

This spring, we are running Super Heroes trips for our Young Mariners and will be reaching out to local schools and care homes to offer trips out thanks to Exxon Local Community Funding. If you'd like to know more, call Suez: 07733 944321.

If you see us out on the water, please show your support by giving us a wave!!



HAMBLE CONSERVATION VOLUNTEERS



With birds starting to nest, we have concluded scrub clearance until the autumn and have turned our attention to other tasks. Recently we helped Eastleigh Borough Council

repair the cattle fencing and corrals on Hamble Common in preparation for the arrival of cattle next month. The cattle play a key role in maintaining the natural vegetation of the Common and an excellent turnout of volunteers enabled us to complete the tasks in one session. In the coming months we will be repairing footpaths and high turnouts are welcome.

Our revised annual programme of tasks is displayed on our website. Please note that the meeting place for the Parish tasks is at the Roy Underdown Pavilion at SO31 4RN whereas beach cleans and Eastleigh tasks meet at the School Lane car park.



If you would like to know more about us, please either visit hambleconservationvolunteers.org.uk or contact Philip Rawlinson: philiprawlinson123@btinternet.com, 07810 453138.

COMMUNITY NEWS CONTINUED

UPDATE FROM MERCURY COMMUNITY LIBRARY & HUB



I'm sure you all saw the wonderful Easter window display at The Hub. Many thanks to everyone who contributed; lots of hand knitted chicks filled with

mini eggs were exchanged for a donation to the Ukraine appeal.

We also have a collection box for Hound Food Bank. There is a weekly notice on our Facebook page highlighting the things that they need, but any donations are very gratefully received.

We had the pleasure of handing over a cheque to Hamble Good Neighbours who were the subject of our last coffee morning. This was incredibly well attended and much tea and cake was consumed, which, along with the lovely keyboard music from Simon, made the event very jolly. We will be hosting another one soon, so keep an eye on our Facebook page to see who the next recipient will be.

We are very pleased to say that we have purchased two very bright and colourful benches to install in the outside patio area (in the hope that we are blessed with a nice summer), so you can enjoy a drink and a chat in the sun.

There are a few spaces left in the book club group, so if anyone would like to join in, please pop into The Hub and leave your name and number with one of the volunteers. Philippa will then get back to you with more details.

As always, check out the regular updates on our Facebook to find out what is happening at The Hub.

HAMBLE LOCAL HISTORY SOCIETY

At its last meeting the Society's Chairman, Ian Underdown, gave a talk about the history of the Hamble-Warsash Ferry. The first written evidence of a ferry between Hamble and Warsash was by John Leland in his itinerary of 1535-43 but obviously it had been operating well before this.

To answer the questions in the last newsletter: the connection between the ferry and the Bugle Inn started in 1681



when wealthy Hamble resident, Daniel Wheeler, took the copyhold of the ferry while also holding the Bugle Inn's copyhold. This close relationship lasted until 1982.

The drowning on the ferry happened in January 1793 when three passengers and a horse were being taken across the river. About halfway across, the horse put its foot through the bottom of the ferry and while another ferry boat came to their assistance, it was too small and filled with water resulting in the drowning of two people.

After the Second World War, the importance of the ferry declined due to the use of cars and buses, with customers such as ramblers, casual holiday visitors and yachtsmen using it more for leisure. Ray Sedgwick took over the ferry in 1958 and devoted his life to it. He was ferryman until he reached the age of 83 and had completed 62 years of service in 2020.

Why are the ferries pink? In 2002 the current ferry owner Mike Lindsell took over the ferry and introduced a new corporate image to raise its profile and everything was coloured pink. Mike and the current ferryman, Sam Phillips, were at the talk that was very well received and enjoyed by those who attended.

The Coronation Parade Post Office has a few more 'Hamble Families & People' booklets, that sold out at Christmas. A booklet on the history of the Hamble-Warsash Ferry is available from the ferry.

**Accountably**
CHARTERED ACCOUNTANTS

Services for Individuals & Local Businesses

Company Accounts
Tax Planning
Personal Tax
Start Ups

Fixed Price Fees
Free Initial Consultation
www.accountably.co.uk
✉ enquiries@accountably.co.uk

☎ 023 8045 3907

GETTING OUT & ABOUT IN HAMBLE THIS SPRING

With the weather warming up, and lighter evenings and Bank Holidays upon us, now is the time to get out and about and enjoy the River Hamble and the wonderful green spaces that grace our village.

Here's some suggestions to get you started...

- Take the Pink Ferry to Warsash
- Wild swimming in the River Hamble – confident swimmers only!
- Stand up paddleboarding on the River – bring your own paddleboard or hire one through a local vendor
- Explore the River Hamble by kayak – either bring your own or hire one through a local vendor
- Crabbing on the Foreshore and Shell Searching at Royal Victoria Country Park
- Visit the Chapel at Royal Victoria Country Park
- Visit the Hamble Valley Food Festival – Sat 7 May
- Visit The Big Eat Street Food Festival at Royal Victoria Country Park – Sat 4 June
- Visit the Sports Complex – bit.ly/3OnhILb



- Hamble Spy Mission Treasure Trail bit.ly/383AqXB
- Charter a boat and sail along the Solent
- Learn to sail through one of the sailing schools based at Hamble Marina
- Visit the animals, poultry house, farmyard, play barn, wartime cottage and Goat Mountain at Manor Farm Country Park
- Get on a bike and have a ride – the National Cycle Route 2 runs right through Hamble. Check out their map for more details but remember to wear safety equipment! bit.ly/3jVhrRL
- Go on a litter pick – send us pictures of what you collect, and we'll celebrate your efforts!
- Use one of our many open spaces for a game of football, a picnic or just a walk – start with College Playing Fields, Mount Pleasant, Hamble Common, Mercury Marshes, and Westfield Common
- Let the train take the strain – take a short trip on the train and explore your local area
- Watch or take part in the Hamble River Raid on Saturday 14 May – bit.ly/3Mj5XDL



HAMBLE BUSINESS DIRECTORY

Our winning formula does it again!

Another property let with Letology

If you're thinking about letting your property, then give us a call on: 01489 854 382 or visit leaders.co.uk



Hamble Estate Agency

023 8045 5055

post@hambleestateagency.com

We have been successfully helping people move in and around Hamble, Netley & Bursledon for more than 30 years. Located in the heart of Hamble Village, our team provides a personal, professional, and confidential service.



R&M Property Maintenance

07757 808 290

randmpropmain@talktalk.net

Based in Hamble, we offer a range of construction services including: property renovations, conversions & all fixtures/finishes, all aspects of roofing to both pitched & flat roofs incl. chimneys, leadworks & UPVCs

ADVERTISE YOUR COMPANY HERE FOR JUST £24 PER ISSUE!

Your
Logo

Our newsletter is delivered to over 2,500 households throughout Hamble. To highlight your business to the community, contact us today for more information on our advertising options.

WALKING IN HAMBLE

There are so many lovely walks around our village, but for those new to the area or just for those who would like a new walk to enjoy, here's a recommended stroll which takes in many of Hamble's unique scenery, courtesy of Hampshire County Council's 'Enjoy Hampshire's Countryside' campaign:

“Walk along the Hamble Foreshore which is commemorated by anchors and a plaque. This was formed following reclamation work during World War II when US troops built a dock for D-Day landing craft. St John's Hill leads you up to the Village Green. At the top, just before the Village Green, make your way along the driveway on the left. Then follow the footpath into the wooded area to the right of Mere House.

Coming out of the woods at the corner of Avery's Field, bear left towards the River Hamble. Continue along the path beneath the oak trees. Follow the path around to the right and then turn left towards the creek and wooden walkway. Keeping to the water's edge, make your way around the creek, skirting Hamble Common. Walk through a kissing gate on your right; the path will meet the road at the Marina entrance. Crossing the road to the car park you will see the World War II Bofors Gun facing Southampton Water. The Ministry of Defence donated the gun in 1988. Beyond the gun emplacement the path runs between the shore and the Common.

Towards the BP oil terminal, a path branching slightly to the right leaves the waterside, coming to an open glade. Continue across the clearing and join a wide path through the trees keeping the terminal to your left. Follow the path, turning left into Copse Lane. Turn right at the T junction into the High Street where you will see the Priory Church of St Andrew. The Church dates back to 1109 and many of the original Norman features still survive. Knife marks made by fishermen thanking God for a safe voyage cover the door to the Church.

Opposite the Church, go along Hamble House Gardens and follow the public footpath at the top through the small recreation ground. Follow this path straight ahead. If you like you could take a right-hand turn which shortens your walk by cutting through to Satchell Lane. Continue along the public footpath behind back gardens with playing fields and the former airfield on the left. At the end of the footpath turn right into Satchell Lane, passing the entrance to Mercury Yacht Harbour and Riverside Park.

Here you can take a detour – walk through the Mercury Estate, into St Agatha's Close on your left. You can reach the river via a path between the houses to the right in

Mariners Close. Facing the river you will see the Training Ship Mercury Memorial which reads "Men are the Souls of Ships". TS Mercury trained cadets for the Royal and Merchant Navies and closed in 1968. Take the footpath with the river on your left and follow it until you reach Satchell Lane near a red telephone kiosk, then turn left and follow Satchell Lane back to The Square.

UPCOMING DATES

Early May Bank Holiday
2 May

Spring Bank Holiday
2 June

Hamble Spring Market
Saturday 7 May
10am – 3pm

In the Foreshore Car Park

Platinum Jubilee Bank Holiday
3 June

The Big Eat Street Food Festival
Saturday 4 June
10am – 3pm

At the Royal Victoria Country Park

Hamble-Le-Rice Flower Club
Monthly Meeting
Monday 9 May
1.30pm

At Hamble Memorial Hall

The Big Jubilee Lunch
Sunday 5 June
10am – 3pm

At the Royal Victoria Country Park

Hamble Ladies Group
Talk by Roy Godfrey from Roysbees
Tuesday 10 May
2pm

At the Priory Centre

Hamble Players Who Killed the Holiday Rep?
10 June – 12 June



Tickets are available now for £15 at ticketsource.co.uk/hambleplayers or the local Box Office: 023 8044 0660

Annual Parish Meeting
12 May
7pm – 8.30pm

At Hamble Aerostructures

Upcoming Parish Council Meetings at the Roy Underdown Pavilion

Asset Management Group
Tuesday 3 May
7pm

Full Council
Monday 9 May
7pm

Planning Committee
Monday 23 May
7pm

Hamble River Raid
Saturday 14 May

The Queen's Platinum Jubilee Trail
28 May – 6 June

At the Royal Victoria Country Park

School Half-Term
30 May – 3 June