

## Hamble Stands With Ukraine



## WELCOME!

Each year the Parish Council arranges a Parish Meeting. It's your meeting - we just help to make it happen. In some years, the focus has been on the work of the Parish Council; on other occasions we have had organisations and groups join us to give talks. A few years ago, we used the Parish Meeting to highlight ways in which the local community could reduce plastic waste. This year, the meeting is provisionally due to take place on Thursday 12 May at 7.30pm, and we are throwing it open to you for ideas. We will be casting the net wide to invite a host of people and organisations. This will be the first opportunity for the village to come together since the start of the Covid 19 pandemic and I hope to see as many of you there as possible. If there is a topic that you would particularly like discussed, please email or call the Parish Office with your thoughts no later than Wednesday 20 April 2022 and we will create an agenda from the suggestions received.

Inevitably the future of Hamble Airfield and associated quarrying application will be something that you would like to discuss. We completely understand this but hope that we can also set some of the evening aside to talk about the great things that happen in Hamble that we love and cherish.

Which leads me nicely onto Jack Jarvis and his single-handed world record beating Atlantic crossing. Hamble is home to so many great sports men and women and Jack adds further to that reputation. The Parish will be marking his world record by dedicating one of the new benches at the Southern Foreshore to Jack and his awesome adventure and achievement. Long may Hamble be the home of people like Jack. Welcome Home!

**Cllr Simon Hand**

## In This Issue

The Future of Hamble Airfield: Update....**2**  
Platinum Jubilee Plans .....**3**  
Southern Foreshore Bench  
Sponsorship/Ownership.....**3**

Warden's Watch.....**4**  
Easter Focus.....**9**  
What to Do in Your Garden in April... **10**  
Hamble Airfield Recreational Survey.... **11**

## PARISH COUNCIL CONTACT DETAILS

☎ 023 8045 3422    🌐 [hambleparishcouncil.gov.uk](http://hambleparishcouncil.gov.uk)    ✉ [clerk@hamblepc.org.uk](mailto:clerk@hamblepc.org.uk)    📺 @hamblepc

# COUNCIL LED NEWS

## THE FUTURE OF HAMBLE AIRFIELD: UPDATE ON PLANNING APPLICATION

Hamble Parish Council, with the help of our planning consultant, has submitted its objection to the Hamble Airfield Planning Application for the extraction of sand and gravel. At this stage, our objection focuses on the headline issues – but we will be following up on the many points you have raised with us over the last few months.

A summary of the objections are as follows:

**Reason 1** – Traffic Impact: The Cemex application would create a severe impact on the local road network which is unacceptable and contrary to policies in the HMWP and the National Planning Policy Framework (NPPF).

**Reason 2** – Proposals for Restoration and Management

**Reason 3** – Environmental Impacts • Flood Risk • Air Quality • Noise • Dust • Site Layout and Management

### Conclusion

The Parish Council asks Hampshire County Council, as the local planning authority to note its **OBJECTION** to the Cemex application and consider all the points raised in this and any subsequent correspondence to ensure that they properly inform the planning judgement that may be reached in due course. The Parish Council reserves the right to submit further detailed comments on consultation responses and additional material or evidence submitted by the applicant prior to the application being determined. The Parish Council also places on record its readiness to participate constructively in discussions to address the concerns that it has raised.

Our objection can be read in full here:  
<https://bit.ly/3igDeTe>



### Next Steps

We will be doing a short traffic survey next to the schools on Hamble Lane, a survey of the Airfield users, and will be in contact with local businesses to better understand their issues.

## HAMBLE AIRFIELD PARISH SURGERY

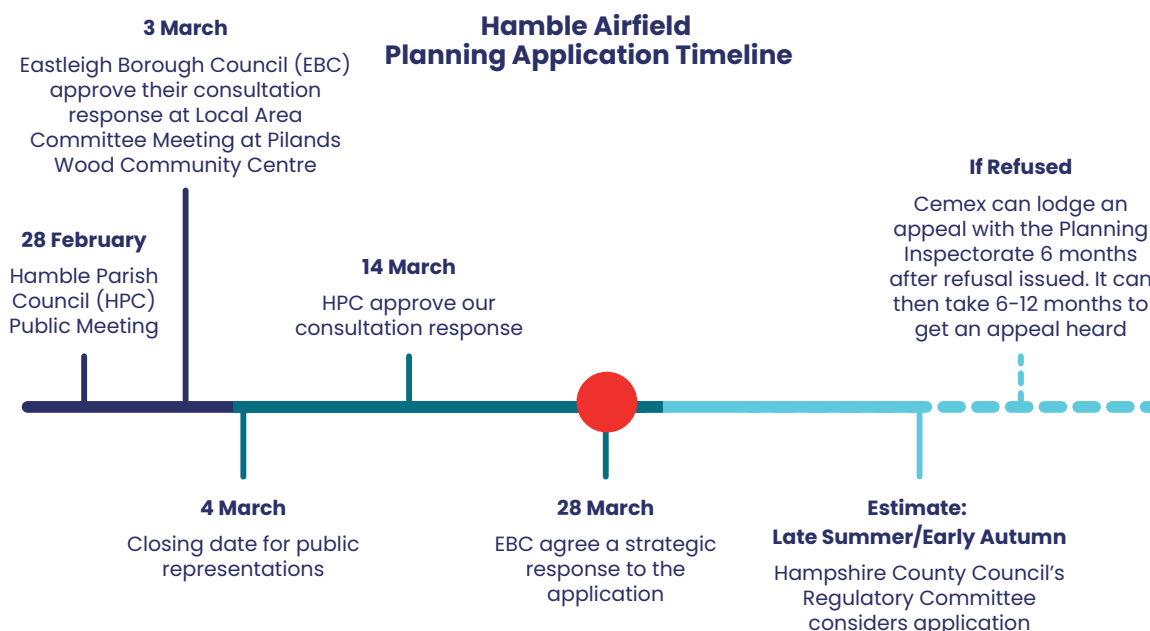
Not a fan of phones, emails or social media? Prefer to speak to people face to face? Come along to our Parish surgery on Wednesday 13 April 2022 at 7-8pm at the Roy Underdown Pavilion. Councillors will be there informally to meet residents either as a group or individually. Drop in and have a chat.

### Where to Find Information?

Our website has lots of information (<https://cemex.hambleparishcouncil.gov.uk>) and we will also keep the noticeboards and the Hamble Parish Council Facebook page updated.

### Have a Question?

Send in your questions via our Hamble Airfield microsite and we will continue to answer them. Check out the FAQs page for all the questions we've answered so far!  
<https://bit.ly/3L9wgM0>



# COUNCIL LED NEWS CONTINUED

## SPONSOR A BENCH AT SOUTHERN FORESHORE

Would you like to sponsor one of the new bench seats at the Southern Foreshore? There are 2 options available for sponsorship/purchase.

The details of which are as follows:

### Sponsor a Seat for 10 Years:

- Time Period: 10 Years
- Cost of Seat: £450
- Cost of Plaque: £40
- Total Cost: £490

### Purchase a Seat for the Life of the Bench:

- Time Period: for the life of the seat
- Cost of Seat: £4,500
- Cost of Plaque: Included
- Total Cost: £4,500

To apply for sponsorship/ownership of a bench, please go to <https://bit.ly/3qtBWsb> and complete the form. The office will then be in touch to take payment.



## TELL US YOUR JUBILEE PLANS!

Over the next few weeks, we'll be creating an interactive plan of what Hamble residents and local businesses have planned for the Queen's Platinum Jubilee so that we can co-ordinate a celebration that the whole village can enjoy.



We'll also be uploading an event Toolkit to our website to help you organise your own street party, tree planting, beacon lighting, or Big Lunch.

What do you have planned? Let us know via email or the Contact Page on our website, so we can add your event to our interactive guide.

## NEWSLETTER CONTRIBUTION DEADLINES

May: 18 April

June: 16 May

July: 20 June

To advertise in or contribute to future newsletters, please contact Danielle – [danielle@smartmarketinguk.com](mailto:danielle@smartmarketinguk.com).

## LOOKING FOR A SPACE TO HIRE?

Look no further! Roy Underdown Pavilion is an ideal space for children's parties, team building days, interviews, training sessions, meetings, family gatherings, corporate events, and community groups.

The cost of hire is just £20 per hour for the first hour and £10 per hour thereafter, and a refundable deposit of £50 is all we need to secure the booking.

Visit the Parish Council website to check out availability, make a provisional booking and read the terms and conditions.



### Roy Underdown Pavilion Available for Hire!

- Children's Parties
- Meetings
- Corporate Events
- Community Groups

To Book,  
Call 023 8045 3422

# COUNCIL LED NEWS CONTINUED

## ALL CHANGE IN THE GROUNDS TEAM

From 1 April, the job titles relating to members of our grounds team will be changing.

The new titles are as follows:

- Collectively the grounds team will now be known as the estates team
- The Head Groundsman Richard will now be known as the Estate Team Leader
- Groundsmen Altin and Chris will now be known as Estate Team Assistants
- Parish Warden Mark will now be known as the Estate Ranger

While their titles are changing, the personnel themselves will happily remain unchanged!

## CELEBRATING 25 YEARS OF SERVICE TO HAMBLE

On 1 April 2022, councillors and staff will be celebrating an important anniversary. On this date, Richard Clarke, our Head Groundsman (soon to become Estate Team Leader) will have reached 25 years of working for the village and residents of Hamble as a member of the Hamble Parish Council team.



During this period, Richard has seen his role change significantly. He now spends much more of his time managing areas of the village for the benefit of wildlife, as well as identifying ways to improve residents' enjoyment of Hamble in a cost-effective and environmentally responsible way.

If you see Richard out and about you might want to thank him for his long and loyal service to Hamble. Everyone in the Parish Council team will be celebrating this significant milestone with him.

## WARDEN'S WATCH

Hello again Hamble habitants,

With the passing of the equinox (Sunday 20 March) Spring is definitely in the air.

As the days get longer and warmer the countryside starts to burst into life. This is the time of bees, buds and blossom and loads of beautiful daffodils. Many of the daffodils you'll notice around the village were planted by Altin Fejzo, one of the estates team. Keen gardener and busy bee Altin can often be seen riding around on our grass cutting vehicle, keeping all the grassy areas looking their best.



Speaking of the estates team, we have welcomed back Chris Ayres who after a long absence recovering from ill health is now working full time with the team. Chris is very pleased to be back and has a very positive outlook on life which really is great to see.

My new title is Estate Ranger which I'm quite pleased with and feels a bit more modern, although my peers insist on calling me Tonto. I thought this meant they see me as dynamic and adventurous, but after a quick Google search, it apparently means "Stupid or Crazy"!!

Future projects the Parish is working on include new waste and dog poop bins which are desperately needed around the village, and the demolition of the old storage shed on Mount Pleasant playing field.

Can anyone identify the song from these lyrics?

**"He says, Son can you play me a memory?  
I'm not really sure how it goes  
But it's sad and it's sweet and I knew it  
complete  
When I wore a younger man's clothes"**

Take care one and all.

Mark Cowley, Estate Ranger  
parishwarden@hambleparishcouncil.gov.uk



# COMMUNITY NEWS

## HOUND BASICS FOOD BANK



Hound Basics Food Bank is the local friendly food bank for anyone in financial need, covering Netley, Bursledon and Hamble, and sponsored by Netley Christian Fellowship.

We have seen a big increase in referrals in our area due to unemployment, illness, and increases in energy bills and food prices, all of which have pushed those families who were already struggling into crisis. Please do not feel embarrassed; you do not need to face this alone! Everything is confidential and we do not judge.

We rely on our local community to keep going and are so thankful to those who donate. We appreciate donations of any staple foods like tins, packet food, pasta, biscuits as well as toiletries and household cleaning products. Unfortunately, we are unable to accept clothes or toys.

### Where Can You Donate?

Hamble Food Donation Point is currently at St Andrew's Church, High Street, from 9am to 5pm. Alternatively, you can drop donations into us at The Haven, Netley Abbey, SO31 5EA on a Tuesday or Thursday between 10.30am – 2pm. We hope to have another donation cage on Coronation Parade in the future.

### How Can You Get Food Help?

You can be referred through various agencies such as Social Services, Schools, Citizens Advice, Job Centre, GPs, or via Eastleigh Borough Council who have a Food Bank helpline: 02380 688000.

### Job Club

CAP (Christians Against Poverty) run a Job Club every Friday. These sessions are small and relaxed and designed to help people gain confidence with interview skills, update a CV, and help people get back into employment. Call us on 07485 007800 for further details.

For more information about Hound Basics including our weekly list of 'Wanted Food' and latest news, please visit our Facebook page: [www.facebook.com/houndbasics](http://www.facebook.com/houndbasics)

**Thank you so much Hamble for your ongoing support. We and the families we help are so grateful!**

## NEW MEMBERS WANTED FOR HAMBLE PLAYERS

Thank you to everyone who came to watch the comedy 'Sandcastles.' We hope you all enjoyed a fun night out and that the picnic brought back fond memories of traditional feasts on the beach. We were very careful not to include any sand in the sandwiches!

We have survived the upheaval of the past two years and now wish to attract new members. Our Youth Group is unfortunately currently 'in limbo' but anyone aged between 16 and 116 is very welcome. We are holding an 'Open House' session on Thursday 21 April, 7 – 9pm in the main Hamble Memorial Hall, so do please drop in to meet us. Everyone is welcome, from budding actors to those willing to do anything connected with backstage, or in fact anyone who is curious about Hamble Players!

Our next event is the always popular Murder Mystery Evenings. 'Who Killed the Holiday Rep' will be running from Friday 10 June to Sunday 12 June. As usual there will be a supper included and don't forget it is essential to pre-book any dietary requests. Tickets go on sale in May.

Chair: Tim Hughes, [tim266@hotmail.com](mailto:tim266@hotmail.com)

Secretary: Carol Ings, [carolings@hotmail.co.uk](mailto:carolings@hotmail.co.uk)

## NEW DEMENTIA CHARITY WANTS TO HEAR YOUR VIEWS

Dementia Support – Hampshire & IOW is a new charity that has been set up to respond to the needs of local people living with dementia and their family carers, by providing emotional support, information, and signposting.

They are conducting a survey to find out more about the dementia support available in Hampshire. If you or one of your loved ones is affected by dementia, they would really appreciate hearing your views via a short survey which should take no more than 5 minutes to complete.

You can find the survey here:

<https://forms.office.com/r/ny4kydV4uw>

Thank you for your time.



# COMMUNITY NEWS CONTINUED

## UKRAINE APPEAL

THANK YOU to everyone who donated to our Ukraine Appeal!

In total we sent 115 boxes (71 of these from Hamble) to the Polski Klub Southampton, for Ukrainian Humanitarian Aid.

It's been an emotional journey. Countless hours collecting and packing donations, then finally delivering them all to the depot with the massive help of Sarah Thomas (Hamble Sea Scouts) and her van. Endless thanks go to you, to my parents with their van, and to the many others who helped lift, shift, pack, and bring this all together.

It was overwhelming to see the depot, with its thousands of boxes packed and being sorted ready to go. We sent essential first aid, nappies, baby milk, food, toiletries, sleeping bags, and blankets.

If you want to give to this incredible cause, then please donate: <https://bit.ly/3Jyn7fv>



Polski Klub Southampton are also now looking for volunteers to help sort and shift all of the donations. If you feel you have time to help, please look them up on Facebook to make contact.

Thank you again to everyone who has donated. What an amazing community we live in!!

**Vicky McPherson**

## HAMBLE-LE-RICE FLOWER CLUB

At our Annual AGM in March, I was voted in as the new Club Chairman, replacing Sheila Barker who had successfully completed her three-year term. The meeting was very enjoyable. After the Club business was completed, we enjoyed great fellowship over a lovely cup of tea and an assortment of scrumptious homemade cakes supplied by our committee members.

Our next meeting on Monday 11 April at 1.30pm will be a demonstration by Melanie Smith. She is a young, enthusiastic, very talented flower arranger, and I know she will give us a super demonstration. All are welcome, both members and visitors. Please come along and enjoy a great afternoon.

We also continue to run our flower arranging classes at the Roy Underdown Pavilion. We have a Beginners' Class (1pm – 3pm) and an Improvers/Advanced Class (2pm – 5pm) on the third Monday of each month. Everyone is welcome (members £8 per lesson; non-members £10 per lesson). If you wish to join us, please contact me and I will send details.

We have an exciting programme for the year ahead including demonstrations, talks and practical meetings. We are also planning a trip to a beautiful garden in Wiltshire in June and a Club Show in October, so come along and join us – you'll be very welcome!

Christine Wright – 07764 219193  
[christine.d.wright@googlemail.com](mailto:christine.d.wright@googlemail.com)

## HAMBLE LOCAL HISTORY SOCIETY: HAMBLE TO WARSASH FERRY

There can be few who have visited the Hamble or Warsash foreshores who have not seen the pink ferries on the river. You can hear people talking about them but



some of the stories told are often incorrect. Today the ferries carry bicycles, but did they really carry horses in the past? Why are they pink? How did two people drown on a winter's day in the late 1700s? Why did the ferryman pay the rent at the local pub?

To find out the answers to these questions and identify the facts from the fiction, come along to hear the Society's Chairman, Ian Underdown, talk about the history of the Hamble-Warsash Ferry. The meeting is on Thursday 7 April at 7.30pm at Hamble Memorial Hall (Rear Hall).

New members and visitors are always welcomed! The cost is £2 a meeting. If you would like more information please contact the Society's Secretary, Margaret Greenfield on 023 80 454373.

The Mercury Hub currently has a display of its collection of local history books, many of which were donated by the Hamble Local History Society, including a copy of the history of the Hamble-Warsash Ferry.

# COMMUNITY NEWS CONTINUED

## HAPPY 100TH BIRTHDAY, BETTY!

Betty Stanley, Hamble resident for over 25 years, celebrated her 100th Birthday on 20 March 2022.

When you meet Betty, you realise you have had the privilege of meeting a unique and special person.



When talking about her first visit to Hamble in 1957, Betty says "We couldn't afford to race cars and my husband came home one day and announced he wanted to start sailing. Thank goodness I could swim! Bill had heard that the local university had some hulls from Fairey Marine, and they were making the boats themselves. This was a forward-thinking approach because they were made with ply. We visited Hamble, from North Wales, to see how it was done and came away with a Firefly hull and enough marine ply to make a Cadet for our sons. Sailing gave us a lovely sense of free speed. Who needs fuel?"

An historical memory that stands out for Betty was the first bombing of Liverpool. "I felt NO, this cannot be happening. It took a day to sink in that we were actually at war. It was shattering."

What advice would Betty give to others who follow in her footsteps? "Find out what your weaknesses are and try to avoid them." Wise words indeed.



What is the secret to Betty's eternal youth? "Genetics, sunshine, fresh air, and good classical books." Betty still enjoys being in the fresh air, even if the sun isn't shining. "I always enjoyed walking. In the Wirral, you could walk between villages, no lights on, even without moonlight, and you still had a feeling you knew where you were."



**Happy Birthday Betty from all of Hamble.**

## HAMBLE LADIES GROUP



Well, we were 'blown away', quite literally, with the amazing balloon displays that Phillippa Pountain, Hamble Balloon Creator of Balloon Treats brought along for her talk to

us on Tuesday 8 March. Once again, we had a full house with everyone enjoying a cuppa whilst listening to Phillippa.

Phillippa gave a brief history of how she came to start up her business in 2020 having been made redundant from her job in London. She explained that her journey began after watching a YouTube video on balloon modelling and that it has been with hard work, enthusiasm, and a lot of learning that she has become the qualified Balloonist/Stylist that she is today.

Phillippa is the architect of a large variety of designs which include bubbles, orbs, table decorations, bubble light stands, character displays, helium numbers, organics, arches and garden displays to name just a few. You can view her complete range here: <https://www.facebook.com/Balloonstreat>

Phillippa demonstrated some of her skills, showing us how to blow a balloon up inside another balloon which we found very interesting. She makes it all look so easy! A very enjoyable afternoon with lots of questions for Phillippa to finish off the session.

Our next meeting is on Tuesday 12 April at 2pm in the Priors Centre, Hamble when we have Daniel Angus from Mayfield Nurseries coming along to talk to us about the work they do with Solent Minds. If you haven't joined us, why not come along? It will be nice to see you.

Bobby Conduit – 023 80 453626

Accountably  
CHARTERED ACCOUNTANTS

Services for Individuals & Local Businesses

Company Accounts  
Tax Planning  
Personal Tax  
Start Ups

Fixed Price Fees  
Free Initial Consultation  
[www.accountably.co.uk](http://www.accountably.co.uk)  
[enquiries@accountably.co.uk](mailto:enquiries@accountably.co.uk)  
023 8045 3907

# COMMUNITY NEWS CONTINUED

## JAMTASTIC DELIGHTS AT THE MERCURY HUB



A new batch of homemade jam, chutney and marmalade has been delivered to the Hub. They disappear fast so make sure you come along and

buy some before they're all gone. All proceeds go to charity, with Blood Cancer UK chosen as this year's recipient.

Make sure you check out our window display next time you are walking past! Our team of creative volunteers, headed by Bobby, has made it their aim to fill the window with seasonal or popular themes. World Book Day is currently still on display, but Bobby and the team are now working on an Easter window and trust me, you won't be disappointed.

We continue to support local organisations, with the most recent event being the coffee morning on March 18 for Hamble Good Neighbours, a worthy cause. We will be hosting these coffee mornings on a regular basis, so keep an eye out for the next one and please pop along to show your support.

It is lovely to welcome new members. You are guaranteed a warm, friendly welcome and won't be disappointed at what you find here. If you haven't already paid us a visit, make sure you do.

Our regular events continue to be well supported, including quilling, Knit and Natter, and our games afternoons.

Check out the weekly updates on our Facebook page for more information.

We look forward to welcoming you.

## HAMBLE CONSERVATION VOLUNTEERS

The change to our programme to allocate a dedicated day to Hamble Parish tasks every month was fortuitous. The first task day coincided with the aftermath of exceptionally stormy weather which brought down a number of trees. We were able to assist the Parish Head Groundsman and his staff in removing trees which had blocked footpaths. The Spitfire Lane footpath was particularly badly affected and while Parish staff used chainsaws to break up the large tree trunks, we concentrated on removing the branches and foliage. A large turnout of volunteers enabled us to complete the clearance of storm debris and make a start on cutting back the overgrown laurel bushes running parallel to the path.



Our revised annual programme of tasks is now displayed on our website. Please note that the meeting place for the Parish tasks is at the Roy Underdown Pavilion at SO31 4RN.

If you would like to know more about us, please either visit our website [hambleconservationvolunteers.org.uk](http://hambleconservationvolunteers.org.uk) or contact Philip Rawlinson: 07810 453138 [philiprawlinson123@btinternet.com](mailto:philiprawlinson123@btinternet.com)

## UPDATE FROM ST. ANDREW'S CHURCH

I'm sure all of us have been deeply shocked and upset by the events unfolding in Ukraine. We plan to have the church open at St Andrews on Good Friday (15 April)



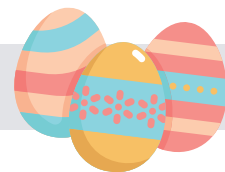
between 9am and 5pm for anyone who would like to come in to light candles and spend their own time in prayer for those affected by this war.

We are planning to send out an Easter letter with details of the Holy Week services at the beginning of April. The main services will be Good Friday devotions at 2pm to the cross, an Easter Sunday sunrise service starting at 6am in the church, followed by breakfast in the Priory Centre, and the main 10am Easter Sunday Eucharist on 17 April.

I say morning prayer in church at 8:30am, Monday to Thursday. Anyone can join me or come along at 9am if you would like the church open for your own time of prayer.

**Father Graham**





## EGG-CELLENT RECYCLING TIPS FOR YOUR EASTER WASTE

The first chocolate Easter eggs were introduced to the UK by Fry's in 1873, and now make up around 10% of our annual spending on chocolate. We typically consume around 80 million chocolate eggs every year, many of which are packaged extravagantly in layers of cardboard, foil, and plastic. Here's how to recycle or reuse these materials effectively:

### Easter egg boxes

These are made from cardboard, so can be flattened, and placed in your green recycling bin for collection by Eastleigh Borough Council.



### Foil

Most Easter eggs are wrapped in foil, which is widely recycled in the UK. However, it cannot be collected in your green recycling bin – you will need to take it to a household waste and recycling centre. To be recycled, the foil must be clean and not contaminated with chocolate.



### What can't be recycled?

- Plastic moulds: these cannot be recycled by Eastleigh Borough Council as they will only accept bottle-shaped plastic. Instead, reuse the moulds to:
  - o Make your own chocolate eggs
  - o Reuse as Spring planters for your garden
  - o Fill with seeds or water to feed birds. If you have a particularly bee-friendly garden, you could fill with sugar water to keep the bees energised on a warm summer's day!
- The plastic windows in the front of the boxes aren't yet recyclable
- Chocolate bar wrappers need to go into the general waste bin



## CRACKING FAMILY GAMES TO EGGS-ERCISE YOUR BRAINS (AND CHILDREN!) THIS EASTER

Don't be a rotten egg! Here's some eggs-citing ideas to help you hatch a plan for some fun to enjoy with family and friends this Easter:



### 1. Easter Egg Hunt

Easter Egg Hunts don't have to be all about chocolate. Instead of getting your family to search for eggs, include some fun challenges in the hunt (i.e., quack like a duck) to get everyone – young and old – having fun and enjoying the day.

### 2. Bunny Hop Race

Turn a burlap sack or old pillowcase into hours of Easter fun by decorating with a tail and ears and encouraging the young (or young at heart) in your family to race each other around the garden!

### 3. Egg Push

Sometimes the simple games are the best, and this one is a spin on the classic 'egg and spoon race'. Instead of balancing the egg on the spoon, each player needs to roll the egg with their nose towards the finish line without using any other part of their body.

### 4. Egg Tower

Get some toilet paper (or paper towel) rolls and cut them in pieces. Instruct the players to build the tallest tower using cut up rolls and eggs: roll, egg, roll, egg, etc. You can either boil eggs and use them for the stacking or use raw eggs. Raw eggs are more fun (especially when the tower collapses) but it can get messy!

### 5. Easter Bunny Bowling

Cut out pictures of Easter bunnies and tape them to 10 empty water or soda bottles. Set them up at the end of a hallway or in the driveway, and let the bowling begin!



**Hamble Spring Market**  
Saturday 7th May 2022, 10am to 3pm in the  
Foreshore Car Park, Hamble SO31 4JE **FREE ENTRY**

Showcasing some of the best produce Hampshire has to offer  
plus live music

[www.hampshirefarmersmarkets.co.uk](http://www.hampshirefarmersmarkets.co.uk) or call 01420 588671

Fresh  
Seasonal  
& Local

# GARDENWATCH: APRIL

Spring is finally upon us as daffodils and flowering trees start to bloom. While there will inevitably be April showers this month, they will hopefully be accompanied by sunnier days too. It's an exciting month, with indoor-sown seeds well into growth, and outdoor sowing beginning. Just watch out for frosts...

Here's the Top 10 jobs to do in your garden in April, as suggested by the RHS:

1. Sow hardy annuals, herbs, and wildflower seeds outdoors
2. Protect fruit blossom from late frosts
3. Tie in climbing and rambling roses
4. Keep weeds under control
5. Start to feed citrus plants
6. Increase the water given to houseplants
7. Feed hungry shrubs and roses
8. Sow new lawns or repair bare patches
9. Prune fig trees
10. Divide bamboos and waterlilies

## UPCOMING DATES

**Hamble Local History Society**  
**Hamble to Warsash Ferry**  
**Thursday 7 April**  
**7.30pm**

At Hamble Memorial Hall.



**Hamble-Le-Rice Flower Club**  
**Demonstration by Melanie Smith**  
**Monday 11 April**  
**1.30pm**

At Hamble Memorial Hall



**Royal Victoria Country Park**  
**Heritage Walk**  
**Saturday 9 April**  
**10.15am - 12.45pm**

Meet outside Chapel. £4 a ticket

**Netley Military Cemetery Walk**  
**Sunday 10 April**  
**10.15am - 12.45pm**

Meet outside Chapel. £4 a ticket

**11 April - 22 April**  
**School Easter Holidays**



**Hamble Ladies Group**  
**Talk by Daniel Angus from Mayfield Nurseries**  
**Tuesday 12 April**  
**2pm**

At the Priory Centre

**Good Friday devotions**  
**Friday 15 April**  
**2pm**

**Easter Sunday sunrise service**  
**Sunday 17 April**  
**6am**

**Easter Sunday Eucharist**  
**Sunday 17 April**  
**10am**

At St. Andrew's Church



**Hamble Players 'Open House' session**  
**21 April**  
**7pm - 9pm**

at Hamble Memorial Hall



**25 April**  
**School Summer Term starts**



**Upcoming Parish Council Meetings at the Roy Underdown Pavilion**

**Full Council**  
Monday 11 April  
7pm

**Parish Surgery**  
Wednesday 13 April  
7-8pm

**Planning Committee**  
Monday 25 April  
7pm

**Annual Parish Meeting**  
**Venue TBC**  
Provisional Date:  
Thursday 12 May  
7.30pm

## Our winning formula does it again!

Another property let with Letology

If you're thinking about letting your property, then give us a call on:  
01489 854 382 or visit  
leaders.co.uk



**L | LEADERS**

# RECREATIONAL SURVEY

## Do you regularly go walking on Hamble Airfield?

The Hamble Airfield site is currently the subject of a planning application from Cemex to quarry and extract sand and gravel. If Hampshire County Council approves this application, most of Hamble Airfield will be fenced off and public access will be restricted.

## If Hamble Airfield was closed off, where you would go instead?

We are working with Eastleigh Borough Council to run a rapid survey and gather this valuable information.

We want everyone to understand what it means to you as Hamble residents if we and visitors are unable to access this important green space.

If you regularly use Hamble Airfield, we'd like to hear from you – either online at <https://bit.ly/3LcGEms> or via the survey below (please complete and return to the Parish Offices at Hamble Memorial Hall).



**Please let us know your thoughts before Friday 29 April 2022.**

## How often do you use Hamble Airfield for recreational purposes?

- ☐ Every day
- ☐ Three times a week
- ☐ Once a week
- ☐ Couple of times a month
- ☐ Other - please state

## Is part of your activity linked to dog walking?

- ☐ Yes
- ☐ No

## If yes, how many dogs do you walk?

## Are you a commercial dog walking business?

- ☐ Yes
- ☐ No

## If Hamble Airfield was no longer available for recreational use, where would you go instead?

- ☐ Hamble Point/Hamble Common
- ☐ Westfield Common/Southampton Water
- ☐ Mount Pleasant/Royal Victoria Country Park
- ☐ Badnam Woods
- ☐ Outside of Hamble
- ☐ Other – please state

## What influences your choice of location? (tick all that apply)

- ☐ Free parking
- ☐ Quiet location
- ☐ Busy location
- ☐ Dog friendly services such as wash points and dog bins
- ☐ Length of walk
- ☐ Ability to let dogs off the lead
- ☐ Accessible paths and all weather
- ☐ Proximity to home
- ☐ Other - please state

Thank you for taking part in this survey, and making your views heard.

If you want to know more about the planning application, go to <https://cemex.hambleparishcouncil.gov.uk>



# HAMBLE BUSINESS DIRECTORY

## Hamble Estate Agency

023 8045 5055

post@hambleestateagency.com

We have been successfully helping people move in and around Hamble, Netley & Bursledon for more than 30 years. Located in the heart of Hamble Village, our team provides a personal, professional, and confidential service.



## Accountably

023 8045 3907

enquiries@accountably.co.uk

Based in Hamble, we provide fixed price fees with a free initial consultation for both individuals and businesses. Our services include tax planning, personal tax and company accounts.



## R&M Property Maintenance

07757 808 290

randmpropmain@talktalk.net

Based in Hamble, we offer a range of construction services including: property renovations, conversions & all fixtures/finishes, all aspects of roofing to both pitched & flat roofs incl. chimneys, leadworks & UPVCs

## Advertise Your Company Here!

See below for details on how you can be included in our print or online business directory!

Your  
Logo

## PROMOTE YOUR BUSINESS

Your feedback to the Parish Publication Review highlighted that many residents would like to see the Council doing more to promote Hamble-based businesses.

In response, we plan to expand the business listings in this newsletter and introduce an online business directory where Hamble companies can provide their contact details and outline what they do. Given that the newsletter and social media feeds are likely to be seen by most people in the village and surrounding areas, we hope that this will be a really effective way of raising your profile locally, and driving more people to your website, which in turn will lead to more enquiries.

### Options and costs are as follows:

#### Option A: Business Directory in Print Newsletter (see top of page)

- 10 issues of coverage
- Distributed to c.2,500 households throughout Hamble
- Cost: Usually £300 per year, but we are currently offering discounted rates of:
  - £240 plus VAT for 10 issues (£24 per issue) – payment in advance
  - £150 plus VAT for 6 consecutive issues (£25 per issue) – payment in advance
- Alternatively, one-off listings will be charged at £35 per month, plus VAT

#### Option B: Online Directory

- Always online on Hamble Parish Council's website
- Cost: £120 per year plus VAT for 12 months of uninterrupted coverage
- Information included in the online directory listing:
  - Business Name
  - Your Logo
  - Telephone Number
  - Email Address
  - Link through to your website
  - Description of your business and services (c.200 – 250 words)

#### Option C: Business Directory in Print Newsletter AND Online Directory

- Cost: Usually £395 plus VAT, but we are currently offering a discounted rate of £350 plus VAT (payment in advance)
- Includes 12 months' entry in the online business directory, plus entry in 10 x editions of the print newsletter

In addition to the above, we're also offering 3 months' free if you are a new business which has started trading since 1 January 2021.

Our standard print newsletter display adverts are also available:

- £50 per half banner (full colour), with dimensions 90mm x 35mm
- £100 per full banner (full colour), with dimensions 190mm x 35mm

Contact Danielle for more information:  
danielle@smartmarketinguk.com