



Photo by Peter Hyde



Photo by Mark, our Parish Warden

WELCOME!

A belated Happy New Year Hamble! I hope that, despite the ongoing challenges faced by the country, you were able to enjoy the holiday season.

The Gravel and Sand Quarrying application for Hamble Airfield has now been registered with Hampshire County Council (HCC). The nature of the scheme means that considerable evidence will be submitted with the application that HCC will have to assess before it can make a decision. Realistically, this could take anywhere between 6 to 12 months. During this time, we will be exploring every avenue to check and challenge the evidence, to raise issues with HCC, and to consider the best outcome for the village if the scheme is approved.

We realise that you, as community members, will want to have as much information available as possible about the planning application. Our new website has a section dedicated to the Cemex application, where we will make all documents available, including our response to the November consultation. It is important that, as residents, you also check the HCC website. This is where all public and statutory consultees’ comments will be found, some of which will be crucial to the application’s success or failure.

We will make sure that regular updates are posted on our website and Facebook page. We will also make the best use we can of the noticeboards around the village – they are located on the side of the Beach Hut Café at the Foreshore, in the Square, on the side of the Parish Office and on the grassed area at the entrance to Coach Road.

We will be organising an unmanned exhibition at the Memorial Hall at the beginning of February, where you can read the planning application documents, evidence, and technical studies, and leave comments/feedback. These comments will then be collated and fed back at a Public Meeting that will be held on 28 February at 7pm at the Royal Southern Yacht Club. Details of the exhibition and how to register for the public meeting will be available nearer the time.

Finally, there is more detailed information in the centre of this newsletter which we hope will be helpful.

Cllr Simon Hand
Chair of Hamble Parish Council

In This Issue

Publication Review.....	2
Budget Update.....	2
Projects Update.....	3
Council Led Updates.....	3-4
Cemex Application.....	5-8
Community Updates.....	9-11
Upcoming Dates.....	11

PARISH COUNCIL CONTACT DETAILS

PUBLICATION AND BUDGET REVIEW

PARISH PUBLICATION REVIEW: FINDINGS & FUTURE PLANS



In November, we invited you to provide feedback on the monthly Parish Publication (i.e., this newsletter) with a view to ascertaining whether the community wanted the publication to continue, and if so, in what format/size, and with what kind of content.

We distributed the survey to 2,500 homes (via the November newsletter), posted a link to an online version on the Council's Facebook page and other community Facebook groups, left paper copies of the survey at several Hubs around the village for residents to take and complete, and carried out 'in person' interviews at Hamble Village Market and the Primary School.

The full results can be found here: <https://bit.ly/3tH9vtl>

Based on the feedback received, the Parish Publication strategy for the next 18 – 24 months will be as follows:

- The current newsletter format will be retained but will move from 8 pages to 12. The introduction of 4 additional pages will allow for more community content, general interest articles, business information, and a

focus on specific themes in each edition (e.g., local sports, sustainability, health and fitness, the Council's budget, youth and schools)

- A business directory will be introduced, to help support and promote Hamble-based companies
- Useful contacts will be reintroduced, to give residents a quick reference guide to contacts for community groups and local resources
- Communication will be improved in other areas identified by residents as being important information sources, including local noticeboards and community Facebook pages
- We have introduced a newsletter signup form on the new website so that, in time, we can start to email the parish publication to those residents who would prefer to receive updates electronically.

We will be migrating to this new content format over the next 1 – 2 issues and would welcome any further feedback or ideas. Please email claire@smartmarketinguk.com with your thoughts.

Lastly, a big thank you to those of you who took the time to give us feedback – we hope you can see your comments reflected in the changes we'll be making.

SETTING THE PARISH COUNCIL BUDGET FOR 2022-23

Raising income

In January 2021, the Council agreed to freeze both (1) precept (money collected as part of your Council Tax) and

(2) fees and charges at the 2020/2021 level. Like everyone we are facing cost increases and so for 2022-23 we will increase our precept by 4% (below the Consumer Price Index). This means that:

- The parish charge will go up from £125.78 to £130.81 per year generating £254,603 for 2022- 23 (an increase from £242,271 in 2021-22)
- Some fees will increase slightly (burial charges and the hourly Foreshore Car park remain unchanged).

Spending choices

This year we have used the money we have collected to fund a number of projects over and above the day to day running of the Parish Council. These include:

- **Improving the Foreshore** – installing new bin stores, upgrading the CCTV and replacing the Southern Quay benches (underway now)

• **Maintaining Roy Underdown Pavilion** – replacing the windows and doors and upgrading the CCTV

• **Enhancing our public spaces** – buying new planters for the Foreshore, The Square and Coronation Parade

• **Bringing expert advice** – appointing a planning consultant to help us with the Cemex Planning Application and future use of the Airfield

• **Communicating with you** – appointing a communications specialist to create our village newsletter, help us with social media and keep in touch with you

• **Streamlining our services** – investing in new technology to support remote working for staff and councillors

• **Delivering more community initiatives** – creating new roles to ensure projects are delivered to benefit everyone in Hamble

More information can be found by following the link <https://bit.ly/3tNlhm2>.

Next month we will confirm our priorities for 2022-23.



PARISH COUNCIL PROJECTS UPDATE

ROY UNDERDOWN PAVILION

Over the last 3 or 4 months you may have seen work taking place at the Roy Underdown Pavilion. This is the start of an ongoing refurbishment project.

Currently we have replaced all of the main windows with new specially toughened glass, and at the same time took the opportunity to replace the ageing wooden window frames with UPVC frames. All of the Velux windows have also been replaced. This work has helped to improve the energy efficiency of the building, as well as make it a lovely space for the community to rent and use.

From a security perspective, all of the external doors have been upgraded to new steel fire resistant doors with high security locks, and the CCTV has been upgraded with HD cameras and new recording equipment.

We are currently in the process of migrating to energy efficient LED lighting in the Pavilion, with the floodlights also being replaced in due course.

Later in the year, we will be looking at replacing the fascia boards and surrounds on the dormers.

SOUTHERN FORESHORE BENCH SEATS

This project commenced in mid-January, with a total of 16 seats due to be replaced over the coming weeks. Further updates will be posted to our Facebook page as the project progresses, and we will include a full report with photos in the March newsletter.

We are currently looking for sponsorship of the new benches, at a cost of £4,500 per bench. If you are interested and would like more information, please contact the Parish Clerk. This is a great opportunity to raise your profile through sponsorship and support the community.

If you are visiting the Foreshore over the next few weeks, please keep clear of the secure areas and observe the safety notices.

Robin Mason, Projects Manager

COUNCIL LED NEWS

LOOKING FOR A SPACE TO HIRE?

Look no further! Roy Underdown Pavilion is an ideal space for children's parties, team building days, interviews, training sessions, meetings, family gatherings, corporate events, and community groups.

The cost of hire is just £20 per hour for the first hour and £10 thereafter, a refundable deposit of £50 is all we need to secure the booking.

Visit the Parish Council website to check out availability, make a provisional booking and read the terms and conditions.



Roy Underdown Pavilion Available for Hire!

- Children's Parties
- Meetings
- Corporate Events
- Community Groups

**To Book,
Call 023 8045 3422**

ALLOTMENT PATH NOW CLOSED

In December, the Council agreed to permanently close the pathway running through the allotments. The pathway was closed on a trial basis in 2021 to reduce footfall, and to test if that measure would reduce vandalism and theft from the allotments. Having consulted with allotment holders, and invited comments from the community, the overwhelming consensus has been to keep the allotment pathway closed.

LOCAL AREA COMMITTEE: CHANGE OF MEETING DATE

The date of the meeting of Bursledon, Hamble-le-Rice and Hound Local Area Committee scheduled for Thursday 17 March at 6pm has been changed.

It will now be held on Thursday 3 March at 6pm at Pilands Wood Centre, Chamberlayne Rd, Southampton SO31 8DT.

COUNCIL LED NEWS CONT.

WINDOW WANDERLAND COMMUNITY PROJECT

Bursledon, Hamble and Hound Local Area Committee and Eastleigh Borough Council are thrilled to be launching a local Window Wanderland on February 19 and 20, from 5pm to 9pm. We would love you to get involved to make something really special for our beautiful area of the Borough, perhaps in your business, or home, or both!

You are invited to make a window display based on the theme 'My Favourite Things'. What things cheer you up or bring your joy in tough times? A place, a hobby, a person, an interest, an animal?

Check out www.windowwanderland.com for examples of how you can decorate or dress your window. You can mimic stain glass with tissue paper, create silhouettes, write out a poem or quote, arrange objects – the possibilities are endless! You don't need to be the next Picasso, it can be as simple as some balloons or fairy lights.

All the displays are put onto an interactive online map for people to follow. This event is fun, creative, inclusive and gives the community an incentive to explore our neighbourhood on a dark winter's evening and enjoy it in a whole new light.

For more information, visit: <https://www.windowwanderland.com/event/bursledon-hamble-and-hound-2022/>



HAMBLE BUSINESS DIRECTORY: WOULD YOU LIKE TO BE LISTED?

The Parish Publication Review exercise highlighted that many residents would like to see the Council doing more to promote Hamble-based businesses.

In response, we plan to expand the business listings in this newsletter and introduce an online business directory where Hamble companies can provide their contact details and outline what they do. We'll then spotlight those businesses listed in our directory on our Facebook page to help raise their visibility among the local community.

The cost will be £120 plus VAT for a year of coverage. If you would like your business to be included, please contact claire@smartmarketinguk.com.

CONGRATULATIONS & THANKS

The Parish Council would like to extend our congratulations to Steve Emery, operations manager for Hamble Lifeboat, who was mentioned in the 2022 New Year's Honours List. Following nearly 30 years of voluntary service, Steve has been awarded the BEM (British Empire Medal) for his dedication to maritime safety – very well deserved.

We would also like to thank Hamble Players for their marvellous production of Mother Goose, which added some real festive cheer to the village in the run up to Christmas. Thank you to everyone who contributed to this production, which was one of the best we've seen in Hamble for some time.



Thank you also to Gaye Perry, Lizzie Tarburton, and all the businesses and individuals who took part in the 2021 Hamble Living Advent Calendar.

These displays bring such joy, colour, and light to our village over the Christmas period, and it's wonderful to see the community coming together to create such lovely windows. Congratulations too to Hamble Fire Station for your winning display!

If you would like to show your appreciation for all the hard work, amazing creativity and generous hospitality of the local families and businesses that brought the Living Advent Calendar alive, the organisers have asked that you make a donation to Hamble Lifeboat – please see their Facebook page for more details: (<https://www.facebook.com/HambleLivingAdventCalendar>)



DO YOU HAVE PLATINUM PLANS?

We will be discussing our plans for the Queen's Platinum Jubilee at the next Full Council Meeting on 14 February. If you are organising an event or have some ideas on how you would like to see Hamble celebrate the Jubilee, please do let us know – we'd welcome your thoughts so that we can co-ordinate a celebration that the whole village can enjoy.

Please email the Parish Clerk with your plans and ideas.



CEMEX PLANNING APPLICATION: THE CONSULTATION HAS STARTED

The planning application for sand and gravel extraction at Hamble Airfield has been submitted by Cemex and the consultation period is now live. Responses to the application must be submitted to Hampshire County Council by 4 March 2022.

Alongside residents in Hamble being consulted, a long list of organisations will be asked to comment on the application covering important issues such as: traffic, noise, flood risk and how the application proposes to restore the land.

Hamble Parish Council will provide a detailed response which will be available on our website. You can also make your own representation as individuals, and we would encourage as many people as possible to respond.

What will the Parish Council be doing?

As you would expect, we will actively look at what other consultees have to say about the application. If we think there is good reason to do so – we will challenge their views or analysis. We will be working closely with Eastleigh Borough Council to help support the arguments we make.

The principle of extracting the minerals was established back in 2013 when the Hampshire Minerals and Waste Plan was adopted. Hampshire County Council will consider the application based on it being an 'allocated site'. This is important because it means we must consider the possibility that the application will be approved at the end of the process.

For that reason, we will be engaging with Cemex and Hampshire County Council to try to ensure that that if we cannot find a way to stop the proposal for extraction from going ahead, then it has the strictest possible conditions and the best possible plans for restoration and long-term community use.

In addition to the above, to assess the impact of the potential excavation on our local community, we have set

up four working groups. The shared goals for each of these groups is to explore different angles relating to the proposed excavation, including:

- Identifying potential weaknesses in Cemex's application
- Safeguarding the interests of those living nearest to the Hamble Airfield site and identifying areas of particular concern
- If the planning application is granted to Cemex, to negotiate the best possible restoration outcome for the community

Details of the working groups' activities will be posted to our website.

Other things to bear in mind

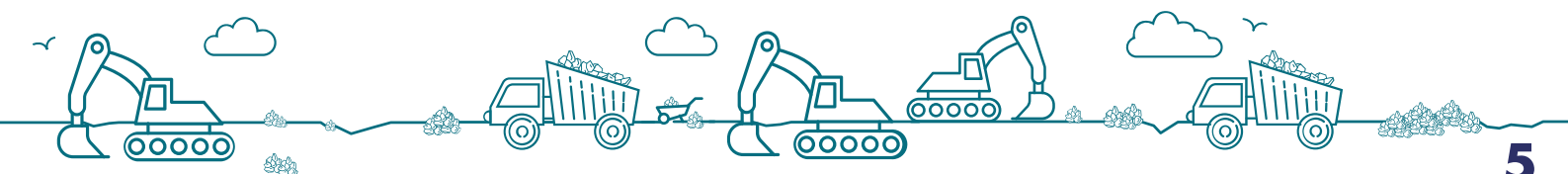
Whatever happens with the Cemex Application, Hamble Airfield will still be owned by Persimmon Homes. They will continue to promote the site for development when Eastleigh begins reviewing its Local Plan within a year or so.

Yes, you did read that correctly – that's a review of the plan they are just about to adopt! Eastleigh Borough Council need to do this review because they do not have enough development sites for the whole of the housing plan period at the moment.

The future of Hamble Airfield – whether for quarrying or housing development – will in large part be dependent on Hampshire County Council's scheme to ease congestion on Hamble Lane.

Recent planning applications have been refused by the EBC Planning Inspector because they would add to congestion and there is a lack of confidence in when improvements will be made. It is something of a 'conundrum' that we want to see the problems of Hamble Lane solved but, the ongoing problems with congestion do help to safeguard the village from future housing development.

Trying to square this circle will remain a challenge for the communities along Hamble Lane for the foreseeable future.





Who owns Hamble Airfield?

Hamble Airfield is owned by Persimmon Homes, a major national housebuilder. They acquired the site because they hope, at some point in the future, to be able to get planning permission for housing on a part of the site. To do this, they would need to convince Eastleigh Borough Council to allocate the site for housing. They were not successful in doing this in the new Eastleigh Local Plan which is expected to be adopted shortly but they can promote it again every time the Local Plan is reviewed.

What about the mineral deposits?

The site is known to have a large deposit of sharp sand and gravel underneath which is a national asset as a source of construction materials. The government requires local authorities to 'safeguard' these assets so that consideration can be given to whether they can be extracted before anything else happens to the site. So even if Eastleigh had allocated any part of the site for other development, the sand and gravel extraction (if permitted) would have to be carried out first. If permission for extraction is refused it makes no difference to the other issues which Eastleigh Borough Council consider are relevant planning considerations for the site – but these can change over time of course.

Who is Cemex?

Cemex is a multinational company founded in Mexico in 1906 which operates quarries and production facilities for aggregates used in the construction industry. It started operating in the UK when it purchased Ready Mix Concrete (RMC) in 2005 and is a well-resourced and reputable company with a large UK market share.

What are they making a planning application for?

The Cemex application is for the extraction of up to 1.5million tonnes of sharp sand and gravel and for the restoration of the site after the completion of the extraction process. Extraction rates from sites like this are generally between 100,000 and 300,000 tonnes each year depending on demand and transport capacity, so it could take up to ten years to complete.

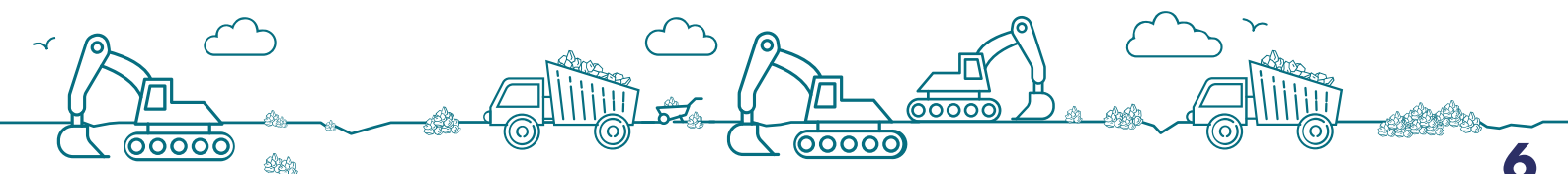
How do Cemex and Persimmon interact?

We do not know the commercial details, but Cemex will have an agreement with Persimmon under which they will carry out the sand and gravel extraction whilst ownership of the land will be retained by Persimmon. Normally such arrangements are not planning considerations, but it may become relevant if there are conditions to be attached to the restoration and maintenance of the site after extraction. It is highly likely that Persimmon will continue to promote the idea of some residential development on at least a part of the site in the future but that is not something which Cemex have to say anything about as part of this application.

Who will decide whether Cemex will be allowed to go ahead?

Rather confusingly, in counties like Hampshire planning decisions about the extraction of minerals like sand and gravel (as well as facilities for waste disposal) must be taken by the county council rather than the district council which takes decisions about everything else. That means that Hampshire County Council will be the decision-maker for the Cemex application not Eastleigh Borough Council. The district council can express a view, and it can make representations on your behalf, but it does not have the final say in what happens.

The actual decision will be made by the elected members of the County Council's Regulatory Committee having received a report from its officers.





Hasn't this been discussed before? There was campaigning a few years ago.

Hampshire County Council is required to produce and keep up to date a detailed plan to ensure that there will be adequate supplies of various different construction minerals for at least seven years into the future. In 2013 it published its Hampshire Minerals and Waste Plan (HMWP) after several years of consultation and community engagement. Despite the opposition of Hamble Parish Council and local people (who came together to form RAGE – Residents Against Gravel Extraction) Hamble Airfield was allocated as a site for sand and gravel extraction. The plan was subject to an independent examination where a government inspector looked at individual proposals and he agreed that there was sufficient evidence to justify it being allocated.

Including Hamble Airfield in the HMWP did not mean that it had planning permission. A planning application to cover all of the necessary details and satisfy the policies of the plan is still required before extraction can go ahead. That is what Cemex have now submitted.

What sort of issues will the planning application have to address?

Government policy sets out a long list of important issues that any application for minerals extraction has to address, ranging from noise, dust production and flood risk, through to the impact on landscape and wildlife. A key concern for Hamble of course is the impact on the local highway network of the vehicle movements as materials are transported away from the site and then when restoration takes place.

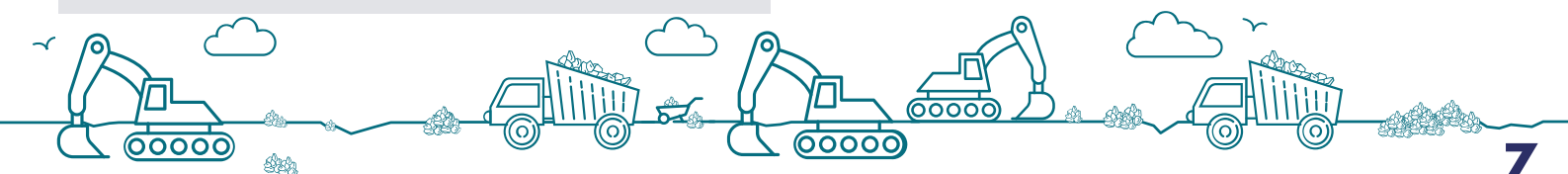
The application also has to explain how the site will be restored after the gravel extraction process has been completed. The HMWP has policies which require restoration to countryside with some degree of public access permitted. This will be a crucial issue for us in considering our response to the application. We will also be looking at what this means for how Persimmon Homes might look to promote any housing development on the site in the future.

Can we revisit the principle and argue that the site shouldn't have been included in the HMWP in the first place?

No, that decision was taken and confirmed back in 2013. Hampshire County Council has kept the HMWP under review and is planning to produce an updated new plan in the next few years. Importantly, the annual monitoring produced by Hampshire County Council does not appear to show a decline in demand for sand and gravel which might have meant that extraction at Hamble Airfield had become unnecessary.

Does that mean that the application is bound to be approved?

No, it does not. Cemex has to demonstrate that the extraction, transportation, and restoration processes can be carried out in a way which satisfies Hampshire County Council as the decision maker that it complies with the other policies in the HMWP and that the impacts on the local community will be acceptable. At this stage, you and other consultees, including Hamble Parish Council, have the opportunity to raise objections and to seek mitigation measures as part of the decision-making process. This is a major planning application, and it will be subject to careful scrutiny by a wide range of organisations and agencies as well as local representatives. It is important to remember however that planning decisions have to be made on the basis of evidence and informed judgement and not just because people would prefer that something was not approved.





What impact will the application have on wildlife and the environment?

A major application such as this one can only be permitted after a careful evaluation of the effect of the development on wildlife and environmental considerations such as noise, air quality, and flood risk. Some work was done to assess this when the site was allocated in the HMWP in 2013. But there may have been significant changes since then and Cemex will have to provide a substantial volume of evidence that the impacts will be within the acceptable limits the Government sets. These will be evaluated by Hampshire County Council when they look at the application but also by consultees such as Natural England and the Environment Agency who are independent and have no vested interest in the development going ahead. The Parish Council will review the representations they make and engage with them if it has questions or concerns about what they are saying.

Vehicle movements are a major concern. How can it be acceptable to put more traffic on Hamble Lane when it is so congested?

This is probably the most significant issue that the application gives rise to, especially as the recent appeal at GE Aviation and the Satchell Lane planning application were both determined on the basis that any additional amount of traffic on Hamble Lane from new development would be unacceptable. We know that the County Council has developed plans to reduce traffic congestion through a programme of highway works, but these are not currently funded or programmed. So we will look very carefully at what Cemex propose and how the County Council responds. It is too early to say what issues will arise, but the position is undoubtedly different from the way it was in 2013 and this is potentially significant.

What approach will the Parish Council take?

As the site has already been identified in the HMWP as one which is suitable and still required for mineral extraction there is very little to be gained from seeking to rerun this discussion. The Parish Council will review the details of the planning application once they are available

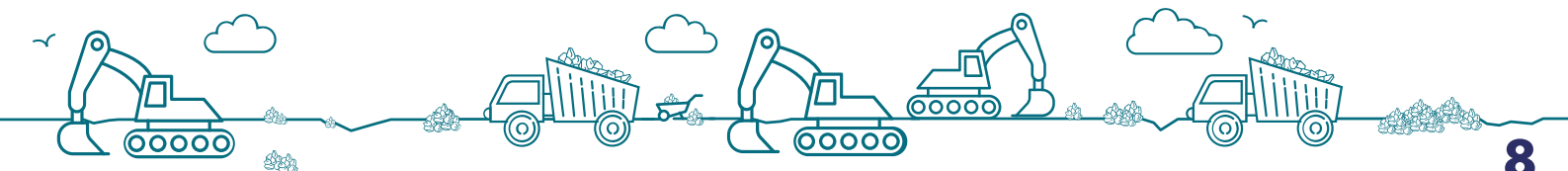
and identify all of those specific issues which are of concern to our community. It will engage constructively with Cemex and with the County Council to see if these can be resolved. **If they cannot then we will raise objections to the planning application on that basis.** Without prejudice to our position, we will try to ensure that if the planning application is approved then it has the least possible impact on our residents whilst the work is carried out, and the best possible steps are taken to restore the site in a way which we support. We will also take account of what Persimmon Homes might look to do in the future.

Will we be able to stop Cemex from getting planning permission?

The allocation of the site by the HMWP means that the presumption will be in favour of granting planning permission in accordance with Government planning policy. We have to identify specific issues that we believe would make the granting of planning permission unacceptable. If we just say that we oppose the principle of the development and hope that this is enough then this is very unlikely to be successful. We also have to remember that any decision to refuse the application has to stand up to scrutiny before an independent inspector at an appeal. If we can obtain changes to the proposals that would lessen their impact or improve the long-term outcome, then it would be sensible to try to do this because the application might be approved without them anyway. The Parish Council will represent your interests vigorously and constructively, which will include discussions as necessary with Cemex, Hampshire County Council, Eastleigh Borough Council, and other agencies. We have engaged professional support to help us do this.

Where can I get further information and keep up to date with what's happening?

The Parish Council's website has a dedicated area where we will publish important documents and keep you up to date with what is happening with the planning application and our responses to it. We will be arranging a number of groups to look at key issues and ensure that there is a good level of communication between the Parish Council and our community.



COMMUNITY NEWS

OPEN WATER SWIMMING ON THE RIVER HAMBLE

Following a sad personal event, I acted on a promise to myself that I would take up open water swimming. I was fortunate that I had a friend waiting in the wings for me and was welcomed into a group. I have never looked back!



The benefits are massive and different for everyone. For me it was primarily for the exercise, something that I could fit it into my life and be amongst nature. The unexpected benefit was the effect it had on my mental health. It feels like my brain and body have had a reboot. I am left with an overwhelming feeling of calm and renewed positive energy that stays with me for the entire day. It is magical and exhilarating, one that takes your breath away in more ways than one.

We are lucky where we live, we have many locations to go swimming that are literally on our doorstep and there is a bunch of us crazy like-minded individuals who meet up, all of varying abilities and strokes. Some stay onshore with or without dogs, photographs are taken, some swim far, some not so far, some run along the shallows Baywatch style and some of us attempt a little synchronised swimming!

If you see us give us a wave and if you fancy dipping your toe in, come and chat to us, everyone is welcome.

Kate White

NEWSLETTER CONTRIBUTION DEADLINES

March: 14 February

April: 21 March

May: 18 April

To advertise in or contribute to future newsletters, please contact Danielle – danielle@smartmarketinguk.com.

UNITED WE CONQUER WORLD RECORD ATTEMPT UPDATE

You may recall reading in a previous newsletter about Hamble resident Jack Jarvis, and his 'United We Conquer' challenge – rowing 4,500 nautical miles solo and unsupported across the Atlantic Ocean in a world first, in aid of Braintrust and CALM.

Jack is making good progress, although the wind has not been kind to him, going in the wrong direction and sometimes sending him back the way he has already come! He has had to deploy his parachute anchor on numerous occasions to try to prevent drifting in the wrong direction, at one point heading 16 miles back towards the Canary Islands! However, Jack is still in good spirits and cracking on, but rationing his snacks!

You can track his progress live on unitedweconquer.co.uk or his Instagram account 'United We Conquer'. Jack is hoping to arrive in Miami in around 80 days. I'm sure you will all join us in wishing Jack all the very best on the rest of his journey.



HAMBLE LADIES GROUP

The meeting on 11 January – our first since March 2020 – was attended by nearly 50 women.

We certainly weren't expecting that! What a nice surprise to see so many people turn up to enjoy a very socially distanced social afternoon. Not only did we welcome previous members, but we were also pleased to see a lot of new faces.

There were quizzes, tea, coffee and biscuits, a couple of games of 'Irish Bingo', and as usual a lot of chattering and laughter going on.

It was good to see everyone enjoying the afternoon and hopefully they will all want to come again.

Our next meeting is on 8 February when we have Alan Mehlin coming along to chat to us about his hobby of making 'Rocking Horses'. You will be pleasantly surprised when you see how beautiful the horses are.

The meeting starts at 2pm in the Priory Centre, Hamble Church. Why not come along and join us?



Services for Individuals &
Local Businesses

Fixed Price Fees
Free Initial Consultation
www.accountably.co.uk

✉ enquiries@accountably.co.uk

Company Accounts
Tax Planning
Personal Tax
Start Ups

☎ 023 8045 3907

COMMUNITY NEWS CONT.

HAMBLE LOCAL HISTORY SOCIETY

The Society has donated over 30 books/booklets to the Mercury Library and Community Hub for it to form a local history reference section. It is hoped that these books will make a contribution towards Hamble residents enjoying the library.



A reminder – the Society's next meeting will be on 3 February at 7.30pm at the Memorial Hall (Rear Hall) where Toby Marris, skipper of the 'Jolie Brise', will be telling the story of this sailing boat that is based at Hamble. It is arguably one of the most famous tall ships in the world. She is owned by the Dauntsey's School and she takes its pupils on sailing cruises locally and all over the Northern Hemisphere.

Toby will be describing the fascinating history of the over 100-year-old 'Jolie Brise' that was originally a gaff rigged pilot cutter. She has won the Fastnet race three times, including the first race in 1925, and subsequently the Tall Ship's race four times. He will then give information about her current use, particularly the pupils' experiences and her voyages.

As always new members and visitors are welcomed! The cost is £2 a meeting. If you would like more information please contact the Society's Secretary, Margaret Greenfield on 023 8045 4373.

HAMBLE PLAYERS

Rehearsals are well under way for our first play in over two years – 'Sandcastles'. This gentle comedy will appeal to everyone and has given our members, both old and new, a focus during the winter months.

To get you all into the summer spirit, we will be serving a picnic and seating people around tables. This will mean numbers will be restricted when compared to the more traditional format with the raised seating. If you book a full table there will be a discount but even if you just want to enjoy an entertaining local night out, sharing a table can be fun.

We can cater for different dietary needs but ONLY with advanced notice.

UPDATE FROM THE MERCURY HUB

Don't forget to come along to The Hub to meet our lovely volunteers who work so hard to keep this wonderful facility open. Books to borrow, papers to read, puzzles to do and activities to join all make The Mercury a great place to visit.



Our new crib sessions on Mondays at 2pm are proving to be very popular as is the quill and chill session on Monday mornings at 10am. Irene offers something new to attempt every week and everyone goes home with their creation feeling very pleased with what they have achieved, so thank you Irene.

Knit and Natter on Tuesday mornings is always well attended, and chat and laughter is part and parcel of the group. We have seen more young children with mums and dads since we opened in the New Year which is lovely as we want to encourage young families to join us. We love seeing the children enjoying the play and reading area and someone is always on hand to read them a story if that's what they would like. Check out our Facebook page for weekly updates on what we are offering so you don't miss out. All of this can be enjoyed with a cup of tea and a biscuit so what's not to like? We look forward to seeing you!



SANDCASTLES - A Play by Bob Larbey (Writer of The Good Life)

Tuesday 29 March – Saturday 2 April at Hamble Memorial Hall

Doors open at 7pm for 7.30pm commencement

£15.00 per ticket, with cabaret style seating and a picnic

It is ESSENTIAL to request any dietary needs at time of booking as we will not be able to rustle up alternatives on the night.

Box Office: 023 8044 0660 or www.ticketsource.co.uk/hambleplayers
Tickets will be on sale from 1 February.



COMMUNITY NEWS CONT.

PUBLIC ART PROJECT: CONTRIBUTIONS REQUESTED

The Eastleigh based Arts and Landscape Architecture Consultancy 'People Place Nature' (PPN) has been commissioned by Eastleigh Borough Council to lead on an exciting public art project for the Bursledon, Hamble and Hound (BHH) Parish Council areas.



The first part of the commission is the creation of a 'Vision' document to guide the delivery of future public art wayfinding projects. The History and Heritage Wayfinding Trail, which is part funded by South Western Railway, will be the first of these projects and its primary aim is to improve walking and cycling access to and from Bursledon, Hamble and Netley rail stations.

If you have any suggestions or would like to contribute your stories, memories and images of your experience of living and enjoying life in this special corner of Hampshire can you please email info@peopleplacenature.co.uk.

HAMBLE-LE-RICE FLOWER CLUB

Well, here we are, in 2022 with a fully planned programme that hopefully we can carry out without the need to go virtual!

On Monday 14 February there is a Practical Session from 1-4pm. Details of requirements will be sent to members but if you are new to the area, either turn up or phone one of the committee members to learn more. A little bird has whispered that this will have a Valentine's Day flavour!

Our Flower Arranging classes will recommence on Monday 21 February in the Roy Underdown Pavilion. We run a class for beginners as well as the more experienced. The Beginners Class is under subscribed so plenty of room for all. Contact Christine for full details.

Remember, if you are free on a Monday afternoon this could be just the activity you have been looking for. There is a varied programme, including demonstrations, talks, practical sessions, classes, and outings. Meetings are in Hamble Memorial Hall on the second Monday in the month at 1.30pm. Our aim is to be friendly and have fun! For further information please contact a member of the committee. We would love to see you.

Sheila Barker (Chair) 023 8045 3718
Christine Wright (Vice Chair) 07764 219193

CORONATION PARADE CO-OP REOPENING

The Coronation Parade store will be reopening on Friday 4 February with opening times of 6am – 10pm, 7 days a week.

The store will be opening at 6am on launch day with the official launch and ribbon cutting happening later that morning.

UPCOMING DATES

**Hamble Local History
Society**
3 February
7.30pm

At the Memorial Hall

Quill and Chill
Monday, Weekly
From 10am

At the Mercury Hub

**Hamble Conservation
Volunteers**
Beach Clean
7 February
10am

Meet at School Lane
Waterworks Car Park

**Alan Mehlin at The
Ladies Group**
8 February
2pm

At the Priory Centre

**Hamble-Le-Rice
Flower Club**
Practical Session
14 February
1pm - 4pm

At the Memorial Hall

Hamble Walk & Talk
16 February
10.30am - 11.30am

Meet at the Mercury Hub

Window Wanderland
19 February
5pm - 9pm

A brand new event especially
for Bursledon, Hamble and
Hound residents

Hamble School
Spring Half Term
21 February - 25
February

Hamble-Le-Rice
Flower Club
Flower Arranging
Classes
21 February

At the Roy Underdown Pavilion

Hamble Players
Sandcastles
29 March - 2 April
7pm

Tickets are available
now for £15 at
www.ticketsource.co.uk/hambleplayers or the local Box
Office: 023 8044 0660

Council Meetings

Full Council
14 February
7pm

at the Roy Underdown Pavilion

**Public Meeting for
Cemex Application***
28 February
7pm
at the Royal Southern
Yacht Club

*Note: Registration for the
public meeting will be available
nearer the time.

Planning Committee
28 February
will take place after the 7pm
public meeting

Our winning formula does it again!

Another property let with Letology

If you're thinking about letting your property, then give us a call on:

01489 854 382 or visit
leaders.co.uk



L | LEADERS