

Hamble-le-Rice

VILLAGE MAGAZINE

MAY 2019



Dulcars - The Old Rectory. See page 11.

Issue 325

Published by Hamble-le-Rice Parish Council and distributed free throughout the Parish and at
www.hambleparishcouncil.gov.uk

Hamble marquee hire

*Marquee hire, all types of catering, temporary bars,
furniture hire and luxury toilets for
Weddings, parties, corporate events and all occasions.*



www.rumshack.co.uk

Call us on 02382182458 for information

email enquires to ian@rumshack.co.uk

Council News

The Parish Council has held its Annual Parish Meeting when the possibility of developing a Neighbourhood Plan was the main item on the agenda. A small group of interested parishioners attended to hear information about the Plan, and the work of the Council, that enabled them to ask questions and give their views. Sheelagh Cohen, the Chair of the Parish Council, started by informing those at the meeting about the role of the Parish Council and the recent changes in its meetings with the introduction of a Planning Committee, Asset Management Committee and Task and Finish groups. In the future, she said she hoped for greater community involvement, improved partnership working and to move to a more sustainable way of working.

A comprehensive presentation was given to explain what was involved in a Neighbourhood Plan, that has statutory

weight and normally lasts for 5 years. The preliminary process of writing a plan, consultation, independent scrutiny and a final referendum to confirm if the parish wishes to adopt it usually takes about 2 years. The meeting was told that 60% of the existing Neighbourhood Plans do not contain a housing allocation. The results of the recent parish evaluation regarding a Neighbourhood Plan for Hamble that took 5-6 weeks were given. From a potential 2,250 households 220 were in favour of going ahead with a plan and 4 against.

After hearing the views of the parishioners who attended and the results of the evaluation survey the Parish Council at its next meeting discussed whether to proceed with a Neighbourhood Plan. It decided that the Neighbourhood Plan Working Group should meet to consider the feedback from the Annual Parish Meeting and come back with further

Hamble-le-Rice Parish Council

Memorial Hall, High Street, Hamble-le-Rice, Southampton SO31 4JE

Telephone: 023 8045 3422 (Office) or 07402 648 050
07949 160 885 (Grounds Team)

Email: clerk@hamblepc.org.uk / asstclerk@hamblepc.org.uk
headgroundsman@hamblepc.org.uk

The Parish Office is now open Monday to Friday
10am to midday and 2pm to 4pm (except Bank Holidays)

Hamble-le-Rice
VILLAGE MAGAZINE

Advertising & Editorial Enquiries: 023 8045 3422 / vmag@hamblepc.org.uk

DEADLINE FOR APRIL ISSUE: 3pm, Wednesday 15th May

The views represented in contributions submitted are not necessarily those of the Parish Council's or the editor. The editor and Parish Council accept no responsibility for goods or services advertised.



citizens advice Eastleigh

A monthly drop-in advice session, first Wednesday of the month at The Mercury Library & Community Hub. 10am -1pm

Odd Job John

...for DIY jobs you don't have time to do!


Working in and around Hamble

John Coke
t-07966 187041
e-ojjhamble@gmail.com
f-@OddJobJohnHamble



Helen Joyce D.O.
Osteopathy

In the comfort of your own home



07594 643500
helengmjoyce@gmail.com
helenjoyceosteopathy.co.uk

30 years experience
iO Institute Member
Anytime Weekdays
Call Whenever

Bespoke Dining

prepared by us
presented by you

Private parties, buffets, canapés, afternoon tea catered for you by Morven Brown

T: 01489 601059
M: 07980 261648
E: morven@bespoke-dining.com
W: www.bespoke-dining.com

HAMBLE SPA ROOM

An experience to experience
Offering

- Full range of Espa Face, Body treatments & Body wraps
- Airbase makeup – a flawless finish for that special day - Wedding/Proms etc
- Various Massage techniques, including Hot stones
- Lycon Wax – the best wax for a comfortable waxing experience
- Luxury Manicure - Pedicure – Shellac
- Hamble Spa Room 'Ready & Wrapped' gift vouchers available.

Call Sonia – 07727 461008 or visit the web site – www.hamble-spa.co.uk
22 Deanfield Close, Amy Gardens, Hamble, SO31 4JJ

Hamble Oil Terminal

Serving the local community

Contact Justyn Willsmore
BP Hamble Public Affairs - 023 8045 6028



Council News (continued)

proposals.

Representatives of a new website 'Discover Hamble' attended a Council meeting to share information about it and to discuss how it could work with the Council to deliver it as an asset for the community. It is hoped that it will become live in about 6 weeks time. It is anticipated to include details of shops, food & drink, where to stay, local businesses, community & yachting events and things to see & do. The Council's initial view was this would help compliment its own website.

After months of working with other local authorities to have in place for the new season an agreed strategy to overcome the unacceptable anti-social behaviour that occurred last year on the foreshore, the Parish Council was very disappointed to hear that, without discussion with its partners, the Borough Council has withdrawn its consultation on a Public Spaces Protection Order for the Hamble Jetty area. It was agreed to write to the Borough Council on this and a number of other matters to clarify the situation and seek a review of how to improve matters for the future.

The Council has agreed to arrange a D-Day 75th Anniversary event on 4th June to mark the departure of the landing fleet from the Hamble River. A group has been set up with other interested organisations to make the arrangements for this event which will be based on the Foreshore. The ceremony will broadly follow the format of similar previous events.

Regarding the Mercury Hub and Library the appeal for books has been very successful and the shelves are now full. Thanks to the work of the Deputy Clerk, Jeanette Symes, a grant has been awarded by Hampshire County Council for £3,230 to provide iPads, a coffee machine and other small items for the Hub. Police beat surgeries are now being held at the Hub and the next one will be on 10th May from 11am to 12.30pm. In addition to this, so that people who are working can meet the local police, they will be in attendance an hour before each Council meeting up to July. The police have sent the Council its neighbourhood quarterly report.

The Council agreed a concession to support youth outreach activities run by Hamble River Sailing Club. Also, grants were awarded to Citizen Advice Eastleigh to provide a monthly drop-in advice session at the Mercury Hub and to St Andrew's Church to help maintain the War Memorial, Church Clock and Churchyard.

Finally, the Council received the sad news that Grant Woodall was stepping down from the Parish Council. He joined back in 2016 and has led the work on Neighbourhood Planning. His contribution to the work of the Council will be sorely missed and members and staff wish him all the best for the future.

Agendas, minutes and reports for all Council meetings can be found on our website: www.hambleparishcouncil.gov.uk

YOUR LOCAL ACCOUNTANTS - HOW CAN WE CAN HELP?

Our Hamble-based team offer a friendly and professional service to local businesses.

Our clients include trades, professional consultants and the marine industry.

WE CAN HELP YOU COMPLY WITH YOUR OBLIGATIONS

• VAT • Tax • Accounts

AND HELP YOU BUILD YOUR BUSINESS

• Management Accounts • Budgets • Growth Planning

FREE INITIAL CONSULTATION

023 8045 3907 enquiries@accountably.co.uk www.accountably.co.uk

1st Floor, Unit 12, Compass Point, Ensign Way, Hamble, Southampton SO31 4RA



Hound £164,950

Hamble £179,950

Hamble £264,950



Hamble £385,000

Netley ABBEY £335,000

Butlocks Heath £375,000



Hamble £525 per month



NO SALE

NO FEE



Hamble £895 per month

Message from the Clerk

Councillor Sheelagh Cohen opened the Annual Parish Meeting by talking about the work of the Parish Council and I thought it would be useful to share some of that presentation, as parishioners often ask questions about the work we do.

Parish councils are also known as local councils and are the first and smallest tier of local government but despite that we are a statutory body (this means we have certain functions and responsibilities recognised in law) and do some of the things that borough/district and county/unitary authorities do such as have Councillors that make up council, as well as setting a precept for use in the village (a form of Council Tax). Nationally, there are about 10,000 parish councils, the first of which was set up in 1894 after an act of Parliament.

Although the Council is ambitious and has numerous projects it wants to carry out, we are limited in what we are allowed to do. We must have a specific power in order to do something. The powers cover such things as running burial grounds, running a bath house (harking back to earlier times), maintaining open spaces, providing allotments and responding to planning applications. The list is longer but it is for this reason that we sometimes are unable to take forward projects or ideas that the community raise – although we try to be creative in our approach!

We have a total of 12 Councillors all of whom volunteer their time and expertise - without any form of payment - to help run the Council for the benefit of the community. We meet once a month as a council but most councillors are also on other committees and attend these meetings as well. We

have several committees, one covering each of the following: the management of our assets, planning committee and personnel. We also have working groups which enable us to involve community representatives and last year we set one up to help manage the Dinghy Storage Park and a task and finish group has just been formed to help run the D-Day event to be held on the 4th June. Our Councillors come from a wide range of backgrounds, bringing a raft of experience and knowledge with them. For many of them this will be their first experience of working in local government, bringing insight that can help to transform the way we work.

Councillors are responsible for all decisions that the Council makes which can cover anything from payments, policy work, budget setting and operational issues. To help councillors run the Council there are usually paid staff, although this depends on the size of the parish; Hamble employs six staff in total. In addition to looking after the areas of the village that the council owns, we run the office, deal with business administration and accounts, provide advice and support to parishioners and often sign post or refer matters to other organisations who are more able to help or who are responsible for the matters involved. We also run projects that the Councillors want to take forward.

A lot of the Council's work involves dealing with other parts of local government – especially Eastleigh Brough Council (EBC) and Hampshire County Council (HCC). In an ideal world, one part of local government would be responsible for everything within a given area, but sadly things aren't that straight forward. Within the village we have

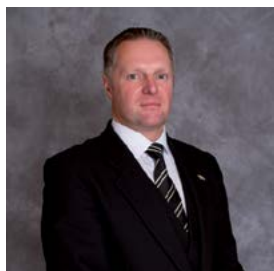


FUNERALS

are important to **SAY FAREWELL**

and help us to create one

LASTING MEMORY



Jonathan Terry
Dip. FD - MBIE - MBIFD

We are here to help and offer our:

- Classic Rolls Royce Fleet
- Mercedes Fleet
- Monumental Masonry
- Coffee Mornings
- Bereavement Support Groups
- Golden Charter Funeral Plans



Jonathan Terry

Your Local Independent Funeral Director
and Memorial Consultant



Please contact us at any time for help and advice at our offices:

101 Peartree Avenue, Bitterne,
Southampton SO19 7JJ

3 College Place, London Road,
Southampton SO15 2FB

email: info@jonathanterry.co.uk

www.jonathanterry.co.uk

023 8043 4444

023 8023 4533



Personal and Caring Funeral Services

Message from the Clerk (continued)

large areas of land that are owned by either HCC or EBC, each of which has different rules about how the land is managed. So, for example, Hamble Common and the adjoining car parks on Copse Lane are owned by HCC but managed for them by EBC, whereas the car park at Hamble Point is owned by EBC. The open space along Spitfire Way nearest to Hamble Lane is owned by HPC, but the trees at the top end are the responsibility of EBC. And then there are highway verges! Confused yet – there's every reason to be. Given this complexity, a lot of our time is spent either pointing people in the right direction or taking up issues directly, on behalf of residents.

Our main land and assets are: Mount Pleasant and the Pavilion, College Playing Fields and the Roy Underdown Pavilion, Mercury Marshes, Westfield Common, the Foreshore Car and Dinghy Storage Parks, the allotments on Hamble Lane, the Community Sports area at Hamble Lane (Squash Club, Sea Scouts and Hamble Club FC), the burial ground to the rear of St Andrew's Church, the Village Green, Donkey Derby Field and Heather Gardens. In addition, we also have several commercial leases.

Much of our time is spent on planning. Parish Councils are consultees on a planning application within the Parish area, which is the same status that members of the public have. What the parish council does have is experience in responding to applications and making the link between community issues or concerns and either the national planning policy or the Local Development Plan including the Waste and Minerals Plan. The Planning Committee

also looks at wider infrastructure issues and has, for example, during the last year commissioned transport consultants to help us respond to the larger planning applications as well as the HCC and Highways England Consultations on the M27 and Hamble Lane.

This Council is now approaching the final year of a 4-year term. The focus of this council has been on transforming much of our back-office operations to reduce the cost of them as well as providing opportunities for residents to use our services when the offices are closed. We have extended our opening hours and hope that residents are finding an improvement in service as a result.

Council has also been wedded to improving the way we engage with residents whether it's through the magazine, our new website, social media or through public meetings, surveys and day-to-day contact. I spend time talking to colleagues in adjoining parishes and marvel at how different our communities are and the way they engage. We are looking at what we can borrow from them to get the message out more about our work and also to gauge opinion on key issues. I often invite people to get in touch and extend that offer again. Without input from the community, the 12 councillors have to be guided on their own experiences or data – nothing has more impact that individual stories and issues and although we cannot always respond to people's issues and needs, we hope to at least make better decisions.

Amanda



**Gecko
Projects Ltd**

Property & Garden Services

Bespoke garden rooms
Resin Bound Drives & Patios
Extensions & Alterations

07502297779

02380199625

build@geckoprojects.co.uk



Find us on

Checkatrade.com



Residential | Respite | Dementia | Day Care

FREE Trial Day Care

Award winning care provided 24 hours a day

A welcoming and friendly atmosphere

Dedicated and expertly trained staff

Activities and events coordinator

Conservatory and quiet areas for relaxing

Well maintained garden with patio seating

Homemade food and cakes

The
Gables
CARE HOME

13 St Marys Road
Netley Abbey SO31 5AT
02380 452324

www.gables-care.co.uk



Top 20 South East care home 3 years running

FLY-TIPPING: WHO'S RESPONSIBLE?

Tips for waste removal

Unfortunately, over recent weeks, there have been more than one occasion of waste being fly-tipped locally.

The illegal dumping of waste, is a crime that damages the environment, risks public health and costs taxpayers to clean up.

Did you know, you could face an unlimited fine if your rubbish is found fly-tipped - even if you didn't do it yourself?

Fly-tipping includes:

- dumping waste on land where there is no waste management licence, including public highways
- giving your waste to someone else to fly-tip
- leaving rubbish or waste outside household waste recycling centres

It is your duty of care to dispose of your waste correctly. You could be fined an unlimited amount by your local council if your waste ends up fly-tipped, and you cannot show that you took reasonable steps to prevent it.

If convicted at court, the maximum fine is unlimited and you could face 5 years in prison.

You must use a licensed waste carrier, or take your waste to a registered site.

USING A LICENSED WASTE CARRIER

Check if your waste carrier is licensed. You can do this quickly with their name or licence number at hants.gov.uk/fly-tipping

Ask what will happen to your waste. A licensed waste carrier should not object to this.

Keep a record of their waste carrier licence number by taking a photo of the licence, or take a screenshot when you check online.

Keep a waste transfer note or receipt to say where the waste was collected from, by who, and where it is going.

TAKE YOUR WASTE TO A REGISTERED SITE

Netley Household Waste Recycling Centre is open 7 days a week except Christmas Day, Boxing Day and New Year's Day. 9am to 6pm 1 April to 30 September, 9am to 4pm 1 October to 28 February and 9am to 5pm 1 March to 31 March.

Most waste is free to dispose of. There are charges for householders taking soil and rubble (£2.50 per standard rubble sack or item of sanitary ware), asbestos (£12 per sheet) and plasterboard (£10 per sheet / £6 per bag).

BULKY WASTE COLLECTIONS

Eastleigh Borough Council can collect bulky waste items, for a fee, including furniture (such as sofas, chairs and tables), fridge freezers, televisions, washing machines and mattresses. To find out more, visit: www.eastleigh.gov.uk or call 023 8068 8000.



Advanced Marine Decking Ltd
Unit 21a, Hamble Yacht Services
Port Hamble
Southampton SO31 4NN

Office Administrator Job Opportunity



We are the UK Distributor of Flexiteek Synthetic Decking Products.
We supply Flexiteek decking for a wide range of Ribs, Powerboats
and Yachts, manufactured here at our workshop in Hamble.

We are looking for a full time experienced Office Administrator, ideally with experience in the marine industry, able to work well under pressure in a busy environment.
Hours: Monday to Friday 9.00am – 4.30pm. 35 hours per week (7 hours per day plus 30 min lunch break)

Job Role :

Dealing with all customer enquiries via telephone & email
Filing and organisation
Input and raising of invoices
Organising daily courier collections and post
Updating customer orders, packing and work schedules
Stock control
Preparing and sending quotes to customers
Other daily office duties as required

The successful applicant will:

Have customer service experience and demonstrate excellent communication skills
Demonstrate honesty and discretion in handling confidential information
Show evidence of working to timescales with the proven ability to prioritise and manage multiple tasks plus their own schedule of work.
Be computer literate and competent in the use of Microsoft Office and Quickbooks
Enjoy working as part of a small team
Be proactive and attentive to quality and consistency.
Relevant qualifications and work experience in an office environment with any book keeping and manufacturing/marine experience are desirable.

To find out more about our company visit www.flexiteek.co.uk.
Apply by email with a CV to sales@flexiteek.co.uk by 10th May 2019.
Successful applicants will be invited to interview after the closing date. Salary dependant on experience.

UK Distributors for:



E mail: sales@flexiteek.co.uk
Co. Reg. 5734198



HAMBLE RIVER SAILING CLUB YOUTH ACTIVITIES

Would you like to celebrate Hamble River Sailing Club (HRSC) Centenary by sponsoring the excellent opportunities for youth sailing that are offered by the Club? Maybe you or your children learnt to sail on the Hamble and maybe you think it is the right of all children who live in this area to have the opportunity to learn how to handle a boat safely.

HRSC is a RYA training centre which not only offers training for adults but also for youngsters from the age of six. These courses are open to everyone, not just club members and the club works with local schools to reach as wide a range of students as possible.

There are also great opportunities for family and cadet club members to get afloat without having to undertake the expense of buying a boat. The club has a substantial fleet of sailing dinghies that can be hired,

thus giving a chance for children to have a go on the water.

For children living in this area the sea is part of their heritage but costs of buying and maintaining boats and safety equipment are high, so we are looking for sponsors who are interested in supporting the work that is being done by HRSC. £5 might buy a shackle and for as little as £25 you could be helping towards keeping a child safe on the water. £1000 could help towards renewing the fleet of dinghies.

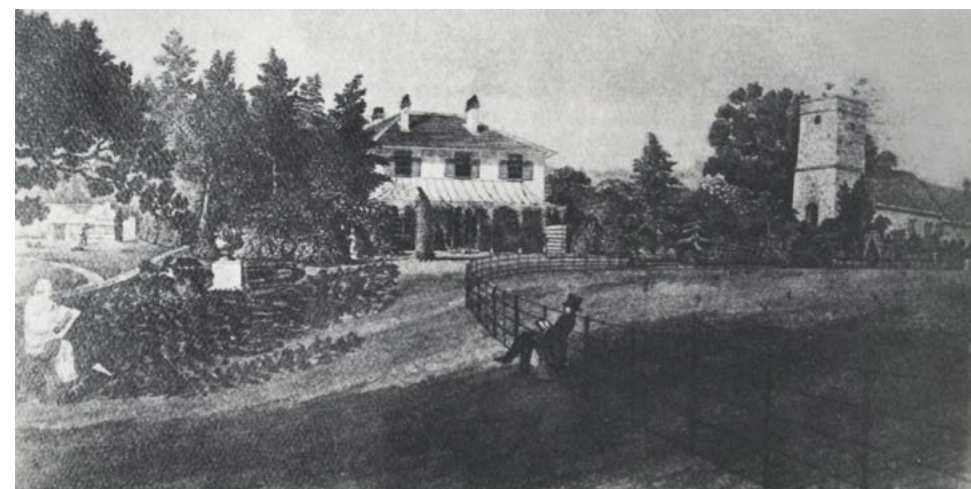
Donations can be made through 'Just Giving' at: www.justgiving.com/crowdfunding/hamble-river-sc

By cheque to: Hamble River Sailing Club (ref. HRSC 100 fund) The Ferry Hard, Hamble, SO31 4JB.

By bank transfer: a/c Hamble River Sailing Club (ref. HRSC 100):

Sort Code 09-01-55 a/c no. 86643087

FRONT COVER: 'DULCARS', THE OLD RECTORY



Front Cover: 'Dulcars', the Old Rectory, is a Grade II listed building. Its listing describes it as The Old Vicarage built 1821. It was built by Rev Harry Lee at a cost £1450 of which half was paid by Winchester College.

ROOFCARE

- Guttering Repairs: Cleaning / Clearing / Unblocking
 - Fascia boards repainted or UPVC renewal
 - Gutter guards or 'Hedgehogs' fitted
- Main roof repairs: Slates / Tiles / Hips / Ridges / Vents.
- Chimney Repairs: Lead-work replacement / Repointing etc

NO JOB TOO SMALL: 10% OAP REDUCTION: FREE ESTIMATES

Please ring Les: 02381 781 364

07931 408 769

IPLAN PROPERTIES

FOR ALL THOSE JOBS AROUND THE HOUSE

BIG JOBS, SMALL JOBS, NO PROBLEM

**KITCHENS, BATHROOMS, PLUMBING, TILING,
CARPENTRY, PAINTING & DECORATING,
ELECTRICS, FLOORING,
FLAT PACK ASSEMBLY**

40 YEARS EXPERIENCE

**WE CAN ALSO LOOK AFTER THE
MAINTENANCE OF YOUR RENTAL OR HOLIDAY
LET**

**CALL ROGER ON
02381 784855 07500 707254**

**OR EMAIL
roger.gunn1@btinternet.com**

BOTOX • FILLER • FACIAL PEELS
CRYOPEN
(FREEZING SKIN TAGS/WARTS/SUN SPOTS)

Skin Dr

**AESTHETIC TREATMENTS BY A
GP SPECIALISED IN DERMATOLOGY**

**Book a Complimentary Consultation to
find out more**

 The Salon, 2 The Square, Hamble
 02380 458458
 www.facebook.com/SkinDrClinic
 skindrclinic@gmail.com

HAMBLE CONSERVATION VOLUNTEERS



We hope that our efforts during the Great British Spring Clean have made a difference. The volunteers were divided up into teams of three and dispatched on pre-planned routes that covered much of Hamble collecting and sorting rubbish into categories for disposal. Our cleaning efforts will now revert to beach cleaning until we are called upon again to tidy up the village.

The main tasks become more varied during the summer as we have to be more cautious with scrub clearance given the intense nesting activity. However, we have made a start on clearing bamboo from Heather Gardens as it is unnatural, intrusive and does not offer wildlife a habitat. One of our members has become a Parish Council Tree Warden and the first task is to complete a thorough survey of the types and condition of trees in Heather Gardens. Once complete it will assist the

Parish Council take an informed decision on its strategy for this highly attractive and important Hamble feature. If you have views on Heather Gardens you would like to share please contact us or Hamble Parish Council.

Regardless of the task we welcome volunteers, the tasks can be arduous but there are roles for a wide range of abilities. Furthermore we appreciate that many people cannot spare the time for the whole task so please do not be put off if you can only be with us for a short time.

BEACH CLEANS

1st and 19th May. To register your interest, please contact Philip or look at our website (details below).

The next conservation task
PATH REPAIR
8th May

*For the main task, meet 10am Hamble Point Car Park and please wear clothing suitable for the weather on the day. We provide all equipment but welcome contributions to the tea fund. To book your place for this event please contact Philip:
07810 453 138 / hambleconserve@btinternet.com.
www.hambleconservationvolunteers.org.uk*

REMINISCENCE IN THE PARK - DEMENTIA FRIENDLY FESTIVAL

Following the success of last year's festival the Bursledon Hamble and Hound Dementia Action Group are organising its second dementia friendly festival, Reminiscence in the Park.

Reminiscence in the Park is an interactive fun-filled day for all the family to raise awareness of dementia.

Along with music and entertainment there'll be a chance to visit the acclaimed Dementia Tour Bus for a virtual experience of what life with dementia might be like. Advice and information on health and wellbeing will also be available.

The free event is on Sunday 26 May 2019, midday to 5pm at Royal Victoria Country Park, Netley SO31 5DQ (parking charges will apply).

All of us at BHHDAG are volunteers, who either work in the area, live in the area or just genuinely have a passion to spread awareness about dementia. We have been a group for 3 years now and have gone from strength to strength, each year we think of something different to do to help those in our area living with dementia and making the community



more dementia friendly.

We are also holding several tea dances throughout the year which have been successful. Music has been proven to help those living with dementia, the next dance is on Saturday 29th June, 2pm-5pm at Abbey Hall in Netley and will be £5 per person, we also hold a raffle at each event.

As a group we meet the second Tuesday of each month at 2pm at Netley Court on Victoria Road. We welcome any new ideas and support.

For further information please contact Bursledon, Hamble and Hound Dementia Action Group by emailing: bhhdag@outlook.com.

RAISE DOUGH FOR LOCAL PEOPLE LIVING WITH CANCER

If baking tickles your (fondant) fancy, Wessex Cancer Trust, would love you to host a Cakes4Cancer event this May and raise dough for local people living with cancer.

Rolling out across the entire Wessex region between 6 and 12 May, Cakes4Cancer is a really simple way to come together with friends, family or colleagues and 'bake' a difference by asking for a donation in return for a cuppa and cake.

Charlotte Von Sicard, Wessex Cancer Trust's Community Manager, said:



"We're passionate about community at Wessex Cancer Trust, and believe everyone living with cancer should be able to get free and local emotional support whenever they need it. Cakes4Cancer

is all about people coming together to enjoy something delicious for a great cause. Your event can be as big or small as you want. You could put on a coffee morning at work, host an afternoon tea with friends or invite neighbours to come along to a bake sale. Whether it's faked or baked, every cake sold could help change someone's life for the better. It really is a piece of cake."

The charity has put together a free kit containing everything you need to host

your own event, including a tablecloth, balloons, posters, cake toppers, game ideas and recipe cards. Sign up at www.wessexcancer.org.uk/forms/cakes4cancer-pack.

Wessex Cancer Trust is a charity dedicated to providing practical and emotional support to anyone living with cancer in Hampshire, Wiltshire, Dorset and the Isle of Wight, and in 2018 helped over 11,000 people throughout Wessex.



On 11th May, Hampshire Farmers' Markets will be returning to Hamble's Foreshore Car Park from 10am to 3pm for their Hamble Spring Festival.

Twenty nine Hampshire Farmers' Market producers will be ready to welcome visitors with delicious food, drink and stunning garden plants.

"Around 30 of our producers will be setting up shop for the day," says David Woodroffe, chairman at Hampshire Farmers' Markets (HFM). "Our markets down in Hamble are always popular. They have become a must do event to visit each and every year. This year there promises to be more food and drink, more entertainment and more

activities to try."

All of HFM's producers must source at least 20% of their ingredients from Hampshire or within a 20-mile radius, plus any produce grown, reared or raised must spend at least 50 per cent of its time with the producer.

There will also be some guest producers on the day, plus live music and face painting for the kids.

For a full list of Hampshire Farmers' Markets producers who will be at the festival visit: www.hampshirefarmersmarkets.co.uk

The festival starts at 10am and is completely free. See you there!

G. Grogan Plumbing & Heating Ltd

**Gas Servicing & Central Heating
Boilers – Installation & Servicing
Solar – Installation & Servicing**

DOMESTIC & COMMERCIAL

**T: 01489 691999
M: 07887 757979
E: the.plumber@ntlworld.com**



Now open in Hamble

- Top quality meats including Pork, Beef, Chicken, Lamb and Game will be locally sourced* for your satisfaction.
- Traditional sausage recipes including 'Rolle's supreme champions', pork and leek, boerewors...



Chambers of Hamble
TRADITIONAL FAMILY BUTCHERS

Opening hours: Tuesday-Friday 8am-5pm, Saturdays 8am-3pm
6 Coronation Parade, Hamble Lane,
Southampton, SO31 4JT
info@chambersofhamblebutchers.co.uk
Phone: 023 8045 4250

* Sourced as local as possible



BERYL'S TEA SHUFFLE

Come and join us for music and a chat!

Thursday 9th May, 1-3pm at
Hamble Memorial Hall.

£2.50 entry including a cuppa
and biscuits.

Call 07944 574 344 for more.



- OSTEOPATHY •
- THERAPEUTIC MASSAGE •
- SPORTS MASSAGE •

Assessments & Treatments Available For :

- Back pain/sclatica • Neck pain/whiplash
- Joint & muscle pain
- Headaches • Sports injuries

For appointments call Sally on 07803 726173
sally@hambleosteopath.co.uk
www.hambleosteopath.co.uk

LJM BOOKKEEPING SERVICES

- Self Employed/Small Businesses
- Bookkeeping to Trial Balance
- Computerised Accountancy
 - Credit Control
 - VAT Returns
- Preparation of Final Accounts for Sole Traders
- Self-Assessment Tax Returns
 - Payroll

Holiday Cover can also be
provided for

Hourly Rate Charged

Contact Lynda on 07774 790543
or Email:

ljmbookkeepingservices@gmail.com

P & L DECORATING

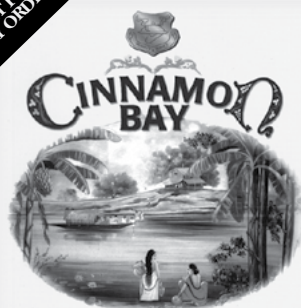
HAMBLE - ESTABLISHED FOR 20 YEARS

- Interior and Exterior
- Free Estimates
- Fully Insured
- No job too small



Tel: 023 8045 3196
Mob: 07517 976 198
Email: philbolwell@gmail.com

20%
DISCOUNT FOR
TAKE-AWAY ORDERS



Contemporary Indian Cuisine

4-7 High Street, Hamble, Southampton SO31 4JE

Tel: 023 8045 2285

Tel: 023 8045 4477

Opening Hours:

7 days a week - 5:30 to midnight

All major credit cards welcome

Free Car Parking

www.cinnamonbayhamble.co.uk
reservations@cinnamonbayhamble.co.uk

VISIT OUR FACEBOOK PAGE

Luxury Matt Emulsion

Special Effect Feature Wall Paint

Wood Primer & Paint



WWW.AVKOINTERIOR.CO.UK

S. LINTON DECORATING

Over 20 years experience
No obligation quotes and advice given
Good knowledge of the best methods and materials
Work carried out in a clean a tidy manner
Reliability assured
Fully insured

02380 230 588
stuartlinton75@gmail.com

 **F.C. HUGHES**
FUNERAL DIRECTORS 

46 St. Johns Road, Hedge End SO30 4AG
Tel: 01489 782404

- Our staff are at your service 24 hours a day
- Memorial advice and products available
- Funeral Plans Available
- Members of The National Association of Funeral Directors

Part of Dignity plc.
A British Company
www.dignityfunerals.co.uk

Effective treatment
that triggers immune function to
accelerate recovery

**For Aches, Pains,
Injury; Bone,
Muscle,
Tendon damage;
Stress,
Tension &
Depression**

Call Tasha in the heart of
Hamble on 07926 876 739
www.alternativepainrelief.co.uk

 **Tasha Ault**
ALTERNATIVE
PAIN RELIEF

...enjoy life free from pain
CALL: 023 8000 7246



The Gregg Schools

Independent day schools for boys
and girls aged 3-16 years old

www.thegreggprep.org

www.thegreggschool.org

**DAILY MINIBUS SERVICE
FROM HAMBLE VILLAGE**

The Gregg Preparatory
School
17-19 Winn Road
Southampton
SO17 1EJ
Tel 02380 557352
office@thegreggprep.org

The Gregg School
Townhill Park House
Cutbush Lane
Southampton
SO18 3RR
Tel 02380 472133
office@thegreggschool.org



BenCurtis carpentry

023 8178 9869

07967 807948

info@bencurtis.co.uk

- Kitchens • Bathrooms
- Doors • Flooring

NO JOB TOO SMALL

AN INVITATION FROM HAMBLE GOOD NEIGHBOURS

Hamble Good Neighbours, the local volunteer organisation which supports people living in Hamble, would like to invite everyone to their Annual General Meeting.

This is taking place on Wednesday 8th May at The Roy Underdown Pavilion, Spitfire Way at 14:30. Refreshments from 14:15.

As well as providing transport to take people to medical appointments, Hamble Good Neighbours is developing a quarterly social gathering. We would also like to expand our activities to encompass shopping and

other welfare trips and to provide a visiting service. We would welcome your views on these service proposals.

This will be an informative and sociable event for anyone interested in volunteering as a driver or befriender, is a representative of another organisation within the village or would just like to find out more.

If you are unable to attend the meeting but would like find out more, please call 0845 643 0371.

D-DAY TALK: "FROM NOWHERE TO NORMANDY"

The River Hamble Combined Sailing/Yacht Clubs Committee is arranging a fascinating evening to be held at the Royal Southern Yacht Club on Thursday 6th June 2019 at 5.30 "From Nowhere to Normandy".

An illustrated talk on D-DAY by Richard Folkes, ex Director of Army Aviation until 2004, is an excellent speaker and will cover amongst other areas the assault on Pegasus Bridge by gliders that was such a key to the success of D-DAY.

Both Warsash and Hamble sides of the River were heavily involved in the build up to Operation Overlord and D-DAY itself, so do come along!

Dress up if you want and join members of the Club for an evening of reminiscences by renowned lecturer Brigadier Richard Folkes,

sing-a-long to period music, and enjoy a hearty meal of cottage pie and vegetables, all for just £15 (£3 of which will be donated to the Speaker's preferred Blind Veterans Charity).

Arrive at 5.30pm and enjoy access to bars in the clubhouse, lecture will start at 6.30 followed by supper and sing-a-long and partying until late!

This event is open to all but booking is essential by June 4th. Please book by emailing events@royal-southern.co.uk or phone the Club.

Early booking is advisable as the Club has a capacity above which it cannot allow additional bookings. Royal Southern Yacht Club, Rope Walk, Hamble. SO31 4HB. 023 8045 0300/0301.

HAMBLE VILLAGE MEMORIAL HALL: AGM

The Annual General Meeting of the Hamble Village Memorial Hall will be on Tuesday 18th June 2019, 7.30pm. RSVP to the Chairman, Michael Davies, hall@hvmh.org.uk – come and enjoy cheese and wine

while finding out what your community hall has done over the last year and for anyone who may be interested in becoming a committee member, we'd love to hear from you.



Expert building and windows, all you need under one roof

With a **100% customer satisfaction** rating last year for windows, doors and conservatories

This **reliable local family** run firm has 20 years experience in the building trade and offering a high quality finish. Services include:

Extensions and New Build
Windows, doors and conservatories (with 10 years guarantee)
Decoration and Maintenance

No job is too small, please contact us for a friendly, honest, value-for-money quote and advice

01329 237715

www.kjnhomeimprovements.co.uk



R&M

Proud members of
Checkatrade.com
Where reputation matters

PROPERTY MAINTENANCE LTD

All External and Internal work undertaken

Specialising in:

- All aspects of Roofing
- Pitched/Flat roofs
- Slate, Tile & Lead work
- UPVC Facias and Guttering
- Roof Windows
- Brick work including Chimneys & Re Pointing
- Patios & Decking
- Laminate & Hardwood Flooring

- Fully Insured
- Trading Standards Approved
- Member Of Checkatrade
- Free Quotations
- Friendly & Reliable

With over 25 years of experience within the Construction Industry

Contact Ray on: **07757 808 290**
Or Email: randmpropmain@talktalk.net

HAMBLE-LE-RICE FLOWER CLUB

Our monthly meeting on April 8th at 1.30pm in the Memorial Hall was a demonstration, entitled 'Fashion Trends' by Irene Hickson. From an arrangement depicting a Flapper Dress through the decades to include a Can-Can petticoat and the Beatles, memories of the clothes we used to wear came flooding back. Irene entertained us with her expert flower arranging and fabulous use of colour. An excellent afternoon!

Exciting news and a first for Hamble Flower Club. We will be holding a Flower Show on



Sunday September 8th in the Memorial Hall. This is an in-house competition for members and their families. However, in the afternoon there will be a chance for everyone in Hamble (and of course the whole county if they wished to travel!) to drop into the Hall and view our efforts. Entry will be free! Tea, Coffee and cakes will be available to buy. So, save this Sunday to do

something different with your friends and family!

Don't forget, if you fancy improving or even learning some basic flower arranging skills and you are free during the day, places on our classes are still available! The cost for the three sessions is £15 for members and £22.50 for non-members. First lesson on Monday afternoon May 20th in the Roy Underdown Pavilion. Contact Christine Wright for more details.

Our meeting on 13th May at 1.30pm brings back to Hamble a stalwart favourite. Carole Norman is not only an Area Demonstrator but also a Speaker. This month she will be giving a talk entitled, 'Another Invitation'. I have no doubt this will be very entertaining.

Just moved to the area or fancy an interesting afternoon watching and learning more about flowers? Please come along. You will be very welcome. For more information, do feel free to contact one of the following people:

Sheila Barker, Chairman
02380 453718
Christine Wright, Vice Chairman
07764 219193
Jeanette Smart, Hon Secretary
07813 326997
Judy Raponi, Hon Treasurer
02392 554157

THE BURSLEDON AND DISTRICT GARDENING CLUB

Our next meeting, on 7th May is a talk by Ray Broughton "Gardening made easy" Members competition: 3 Hosta Leaves in Water.

Meetings are on the first Tuesday each month at St. Paul's Church, Oak Road, Pilands Wood, Bursledon SO31 8DT,

doors open 7 pm for setting up, judging 8 pm. Membership £10 from January, Visitors £2 per meeting. Refreshments, Raffle and Topical Gardening Tips. Further information telephone 02380 402986 or 02380 4449245, or find us on Facebook Bursledon district gardening club.

"Attention Club Members"

HAMBLE CLUB

BEAULIEU ROAD, HAMBLE
Telephone: 8045 2213



THE FAMILY CLUB
Membership Available

- LIVE MUSIC
- BINGO - Wednesdays, Sundays
- Small/Large Function Room Available
- Catering can be arranged
- showing all your favourite games on Sky Sports
- Free WiFi

BADGER CLEANING SERVICES

Carpet & Upholstery Cleaning

A Hamble based Company
specialising in cleaning
carpets and upholstery



Please phone for a quote.
023 8178 7229 / 07780 652933



SOLENT GARDEN SERVICES LTD

ESTABLISHED 1973

www.solentgardenservices.co.uk

Based in Hamble since 1973

Tel : 07787594682
Email : robwoodh01@msn.com

- Garden Maintenance
- Regular Mowing
- One Off Mowing
- Tree Surgery
- Hedge Cutting
- Fencing
- Landscaping
- Design Service

Proud members of
Checkatrade.com
Where reputation matters



Need a local venue for your party?

60 People Capacity
Up to 4 Hours Only £35
LARGE FREE CAR PARK

THE ROY UNDERDOWN PAVILION, HAMBLE
The perfect spot to meet indoors or outdoors

Call 023 8045 3422 or email asstclerk@hamblepc.org.uk to book your hire

PARTIES - CLASSES - MEETINGS - BBQs

HAMBLE LOCAL HISTORY SOCIETY

As this year is the 75th anniversary of D-Day, the Society arranged for Jake Simpkin to give an illustrated talk on Southampton's role in the build-up and its contribution to D-Day. His talk also included the Hamble River area's involvement in D-Day.

Jake started by describing the town's darkest time during the Blitz when Southampton was raided 57 times and the strong folk memories of certain incidents. An increasing number of attacks culminated in three major raids at the end of November 1940. It was Southampton's darkest hour. King George VI and Winston Churchill visited to keep up morale. The air-raids were shocking and violent but it was queues, blackouts, rationing, shortages and working long hours, that typified Southampton during the war years.

From early 1943 there followed the gradual build up to D-Day and Operation Overlord, with Southampton people playing an important role working in the factories and ship yards, as well as building the Mulberry Harbours. The US Army 14th Major Port Transportation Corps arrived in July 1943 and took over the docks' organisation. Jake described the activities of the days prior to D-Day and the troops leaving for the Normandy beaches.

The main naval bases on the Hamble River were HMS Tormentor at Warsash and HMS Cricket at Bursledon. In the build up to D-Day many camps of troops who were to take part in the Normandy invasion were set up in the river valley. The evening before D-Day the river emptied of troops and boats as they went to the Normandy beaches, many not to return.

Hamble's Air Service Training was the

country's largest Spitfire repair base and its ATA women ferry pilots were in the ideal position to see the build up to D-Day but had to keep the details to themselves. On the 5th June, pilots returned with stories of a great assembly of boats and aircraft having black-and-white strips painted on their wings (special D-Day identification markings). At 11am on the morning of D-Day, the first Spitfire, fresh from the battle over France, landed at Hamble, which was to become one of the forward repair units. It was designated a 'prang-patch' for aircraft coming back in trouble from the front in Normandy, just 80 miles or so across the Channel.

Hamble foreshore was taken over by the United States Army Water Division and filled in with rubble from bomb damaged Southampton to build a repair depot. The US Army built workshops and slipways for the maintenance and repair of its small vessels.

Prior to D-Day, Hamble's Oil Terminal was taken over by the Army and the jetty was extended. Hundreds of troop carriers and torpedo boats were re-fuelled for the crossing to Normandy. On 5th June 212 vessels were bunkered at the Hamble jetty. The jetty was used for both refuelling ships on the spot and loading small tankers that plied between the Solent and the actual invasion beaches. To supply the armed forces in France after the invasion, a pipeline called PLUTO was laid under the English Channel and its fuel supply passed through the Hamble Oil Terminal. By 24th March 1945 Hamble Oil Terminal had shipped half a million tons of petroleum products to France.



HAMBLE RIVER SAILING CLUB



OPEN DAY

Saturday 18th May

Sunday 19th May
'Push the Boat Out'

TRY SAILING - ALL AGES WELCOME!
 You can book at the Open Day

www.hrsc.org.uk
 Tel: 02380 452070
 @HambleRiverSailingClub

Your HRSC! Then. Now. For Future Generations

MOORE

ELECTRICAL SERVICES

David Moore - Approved Electrician

| | |
|--|---------------------------|
| • Rewires | • Testing & Fault Finding |
| • Showers | • Fuse Boards |
| • Extra Sockets & Lights | • Security Lighting |
| • Outside Sockets & Lighting | • Fire & Security Alarms |
| • Power to Garages, Sheds and Conservatories | • Extra TV Points |
| • Energy Efficient Electric Heating | • Ethernet Data Wiring |
| | • Extra Satellite Points |

Tel: 01489 786419
Mobile: 07971 405014
Email: info@mooreelectricalservices.co.uk
29 Reservoir Lane Hedge End



Proud members of
Checkatrade.com
 Where reputation matters



ADVERTISING SPACE TO LET

ADVERTISE IN

Hamble-le-Rice

VILLAGE MAGAZINE

vmag@hamblepc.org.uk

HAMBLE LOCAL HISTORY SOCIETY (...CONTINUED)

One of the final tasks for Southampton, in 1946, was the embarkation of British war brides for the USA and Canada. Jake's talk was a tribute to the courage of the civilians of Southampton and the surrounding area during WW2. His

presentation included examples of the small details of how the war affected the civilians which are not normally told. An excellent and comprehensive talk told in a very professional way.

FROM THE COUNCIL'S RECORDS

100 YEARS AGO - Oyster Hard Repairs The report recommended that 60ft of planking and six new posts be replaced and a few loads of gravel ... MAY 1919

100 YEARS AGO - War Memorial ... raised the question of the Subscription Lists to the proposed War Memorial. The general opinion was expressed, that subscribers could earmark the whole or part of their subscription for the Memorial Hall. MAY 1919

75 YEARS AGO - Mr Longman Service Employment ... not being able to attend regularly he being busy engaged in Service Work away from home Mr Longman explained the position he was in at the present time, & that being engaged on a new job found it difficult to come home for Council Meetings ... MAY 1944

75 YEARS AGO - Westfield Common ... that the District Council be informed that the Hamble Parish Council approve of the terms offered by Folland Aircraft Ltd & requested the Dis-Council to complete the transfer without further delay ... MAY 1944

50 YEARS AGO - Rope Walk ... to write to Port Hamble Ltd., asking them to ensure that the debris left following the fire is made safe against children playing in the area. MAY 1969

50 YEARS AGO - Refreshment Kiosk on Quay ... there had been a suggestion from people in the Parish perhaps the Council would provide this amenity and let it on a sub-contract basis. A general discussion ensued, several members spoke against commercialising the Foreshore ... MAY 1969

25 YEARS AGO - Proposed Footpath along the Spur Railway Line ... there were sufficient funds from Hampshire County Council to commence work on the proposed footpath from the Royal Victoria Country Park and along the BP spur railway to its junction with Hamble Lane ... MAY 1994

25 YEARS AGO - Planning Correspondence The name of the proposed development north of Verdon Avenue has been changed to Astral Gardens Development, with traffic gaining access via Astral Gardens and not Verdon Avenue ... MAY 1994

THE ABOVE IS AS RECORDED IN THE ARCHIVES (IMU)

DATES FOR YOUR DIARY IN MAY

Wednesday 8th

Hamble Good Neighbours: AGM

An informative and social event for anyone interested finding out more about the work of Hamble Good Neighbours.
From 2.15pm,
The Roy Underdown

Monday 13th

Hamble-le-Rice Parish Council Meetings

All Council meetings are open to the public to attend.

7pm, Mercury Library and Community Hub

Sunday 26th

Reminiscence in the Park, Dementia Friendly Festival

An interactive, fun-filled day for all the family to raise awareness of dementia.
See page 14 for full details.

Midday-5pm,
Royal Victoria County Park

Saturday 11th

Hampshire Farmers' Market: Hamble Spring Festival



Around 30 local producers, guest producers also.

See page 15.

FREE ENTRY.

10am-3pm,

Hamble Foreshore Car Park

Tuesday 28th

Hamble Parish Planning Committee Meeting

Considering the Council's response to applications in or affecting Hamble.
7pm, Mercury Library and Community Hub

At The Mercury Library and Community Hub

Monthly

Citizens Advice Drop-in Sessions, 1st Wednesday, 10am-1pm

Next Session: 1st May

Barclays Tea and Teach ,2nd Wednesday (by appointment only)

Help with digital skills. Contact the Parish Office to register your interest. Next Session: 8th May

Neighbourhood Policing Team: Hamble Beat Surgery, Friday 10th May, 11am-12:30pm

Come along and meet the team, ask questions and pick up valuable crime prevention advice.

Phonics and Reading Group, Every 3rd Saturday, 2-2.45pm (next 19th May)

A story, activity and phonics teaching for pre-school, year 1 and 2. Drink and a biscuit provided. Pay as you go £2, bring your own cushion and teddy. info@rebeccarogerson.co.uk

Weekly

Creative Writing, every Thursday 7.30-9pm in blocks of 8 weeks

An enjoyable and friendly class to develop your writing skills covering everything from creating characters through to journaling. Refreshments, prior booking essential:
info@rebeccarogerson.co.uk 07496760935.

Beginners Spanish Course, every Tuesday 1.15-2.30pm (10 week course)

Fun, relaxed conversation, beginning on 14th May. @ £50 to secure your first 5 weeks, then £10 per class thereafter. Prior booking essential:
shari@shari.plus.com 07780 958 173

Listing of an event does not constitute endorsement.
Details believed to be correct at the time of publication.

Regular Events

| Weekly | What | Where |
|---|---|---|
| Monday | Monday Club | 1.30pm, Hamble Club |
| Monday (except Bank Hols) | Hamble River Singers Community Choir (Contact basschickbev@gmail.com) | 7.30pm , HRSC Rooms |
| Monday | U-Tone Circuit Training | 8.15-9.15pm, Memorial Hall (Rear Hall) |
| Monday (except Bank Hols) | Forever Fit: 60+ fitness exercise to music. 4 week block £16. (Call Julie: 07952 983 349) | 10.30 - 11.30am, Follands Sports & Social Club. |
| Tuesday | Parent & Toddlers Group | 9.30-11.30am, Memorial Hall |
| Tues & Thurs | Pilates | (Tues 12-1pm) (Thurs 10-11am) Memorial Hall |
| Tuesday | Puppy Classes (contact Annette 023 8045 3490) | 6-9pm, Memorial Hall |
| Wednesday | Yoga | 10-11.30am, Memorial Hall |
| Wednesdays & Fridays | Fantasy Allstars Cheerleading Classes at Hamble Sports Complex | 6-8pm Wed (12+), 5-6pm Fri (3-8years), 6-7pm Fri (9-11years) |
| Wednesday | Chairfit: 60+ Seated exercise to music. 4 week block £10. (Call Julie: 07952 983 349) | 11.15am-12pm, Roy Underdown Pavilion. |
| Wednesday | Cherubs (Contact: Father Graham Whiting 023 8045 2148) | 10.30am - 12pm, St. Andrews Church. |
| Wednesday | Acting Up For class times contact: 07519 754829 | Memorial Hall |
| Thursday | Walking Netball | 10-11am, Hamble Sports Complex |
| Friday | Village Market | Memorial Hall, 9.30-10.45am |
| Bi-Weekly | What | When |
| Tue 14 th & 28 th | St. Andrew's Cafe @ The Priory Centre | 10.30am-12.45pm |
| Monthly | What | Where |
| 2nd Monday | Hamble Flower Club | 1.30pm, Memorial Hall |
| 4th Monday | RAF Association Ichen & Hamble branch (Contact: Steve Rawlings 02380 740771) | 12pm, Hamble Club |
| 1st Tuesday | Bursledon and District Gardening Club | 7pm, St Pauls Church, Bursledon |
| 2nd Tuesday | Hamble Ladies Group | 7.30pm, Priory Centre, St Andrew's Church |
| 1st & 3rd Weds | Hamble Conservation Beach Cleans | 10am, Hamble Point Car Park |
| 2nd Wednesday | Hamble Conservation Task | 10am, Hamble Point Car Park |
| 4th Wednesday | Informal Bereavement Support Group (Contact: Heather Smith 02380 452998) | 2pm-4pm, The Priory Centre |
| Last Saturday | Place 2B Café (Coffee, Cake & Conversation) | 10am-12pm, Priory Centre |

TEA & TEACH

Barclays Digital Eagles will be holding Tea and Teach sessions at The Mercury Library & Community Hub.

They're free, friendly, and a great way to build your confidence with computers and the internet.

Each session will give you practical and helpful advice on all your online issues.

REGISTER YOUR INTEREST FOR TEA & TEACH

NAME: _____

ADDRESS: _____

TELEPHONE: _____

EMAIL: _____

PLEASE CUT OUT AND RETURN THIS FORM TO:

Jeanette Symes, Deputy Clerk,
Hamble Parish Council, The Memorial Hall,
2 High Street, Hamble SO31 4JE

WeRHamble



THE BUGLE
HISTORIC WATERSIDE PUB

*Traditional village pub home to
locally sourced cuisine*

BOOK NOW 023 8045 3000
WWW.BUGLEHAMBLE.CO.UK



**I need to rent
somewhere bigger...**



**“NO DEPOSIT?
NO PROBLEM!”**

L | LEADERS

Find out more
by calling us on
01489 858 347

leaders.co.uk