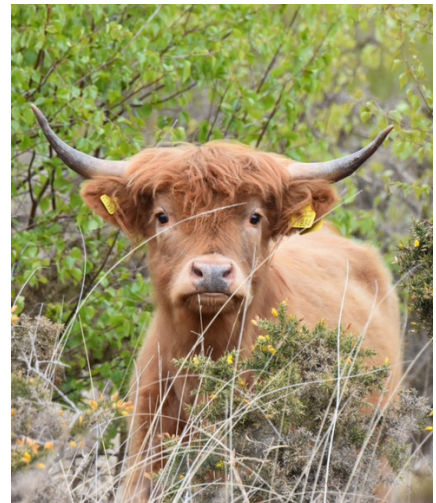


Hamble Village News -

June 2021

HAMBLE
PARISH
— COUNCIL —



Butterfly and cattle photos by Peter Hyde

UPDATE FROM THE CHAIR

The enforcement of a third national lockdown in January has meant that the year to date has been marked by yet more challenges, disruption, and separation from our friends and loved ones.

However, with COVID restrictions starting to lift in recent weeks, there is a noticeable air of optimism around Hamble and the local area, as we all begin to look forward to the resumption of 'normal' life.

Given this, there is perhaps no better time to welcome a new team of councillors. On the 5th of May, you elected your new Council which was formally signed up at a meeting on the 17th May.

Your new councillors are full of enthusiasm and positivity, and we hope to harness this energy to drive forward many new and ongoing projects which will improve and enhance community resources for all residents of Hamble and surrounds.

The changes to your Parish Council are not limited to the volunteer-elected members, but also extend to the staff team. Out and about you will see Mark Cowley who has joined us as the new Parish Warden. His remit is to help keep the village clean and tidy as we come out of lockdown and face our busiest time of year. In the office we also have new team members, with Lisa Bradbury-Knight being responsible for the day to day running of the office, and Simon Stent managing our finances.

Robin Mason will be supporting the Council by driving forward a number of projects.

Elsewhere in the Parish, we've seen the planting of a new orchard by the Parish Council grounds team, who were ably assisted by the 6th Hamble Beavers, Cubs, and Scouts. These new fruit trees – a mix of apple, pear, and cherry – will create a space for everyone to enjoy in the months and years to come.

It was also great to see SeaSky Gallery and The King and Queen highlighted by Eastleigh Borough Council as #BoroughGems, as part of their scheme to identify local businesses who are making Hamble a vibrant and interesting place to live and visit.

At a difficult time for us all, it's been fantastic to see the people of Hamble and surrounding areas come together to support each other and lift spirits, and this is particularly true of the team at Blackthorn Health Centre, whose superb efforts in distributing COVID vaccinations has made us all a little safer.

We hope that this will be the last newsletter in lockdown, and that, with your new Parish Council now in place, we can start to look forward to making Hamble and your community a better place over the coming months.

Cllr Simon Hand
Chair of Hamble Parish Council

PARISH COUNCIL CONTACT DETAILS

☎ 023 8045 3422 🌐 hambleparishcouncil.gov.uk ✉ clerk@hamblepc.org.uk 📺 @hamblepc

INTRODUCING YOUR NEW PARISH COUNCIL



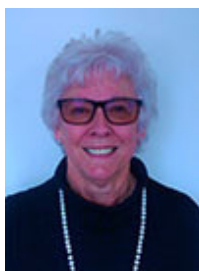
Cllr Simon Hand
Chair of Hamble Parish Council

Simon has been a member of the council for seven years, serving as both chair and vice chair. His priorities are to develop a neighbourhood plan and redevelop the Mount Pleasant site which would include relocating all our staff into one purpose-built building.



Cllr Chris Jones

Chris and his family actively support two charities that work to inspire children to a better future. The Outward Bound Trust and the 1851 Trust use outdoor adventure and high performance sailing to encourage thousands of children on their personal journeys and to introduce them to opportunities in STEM subjects.



Cllr Sheelagh Cohen
Vice-Chair of Hamble Parish Council
and Chair of the Personnel Committee

As a returning parish councillor, Sheelagh seeks to ensure that the Council is run efficiently, effectively, and in as environmentally sustainable manner as possible for the benefit of all parishioners.



Cllr Sarah Lehneis

Sarah's agenda is to promote a Hamble that works together to prevent anti-social behaviour, vandalism and fly tipping which greatly reduce our quality of life and sense of security. She would also like to support further the Mercury Hub in helping it to become a focus point for personal development and education.



Cllr Andy Thompson
Chair of the Asset Management Committee

Andy wants to build on the steps that have been taken to improve the environment in and around the village by additional tree planting, creating more wildlife habitats and further reducing the use of fossil fuel based energy.



Cllr Michelle Nicholson

Michelle brings 20 years of experience in corporate communications and business to the council, and intends to transfer these skills to engaging with Hamble's residents. She would like to be a voice to speak on behalf of pedestrians, cyclists and public transport users in Hamble.



Cllr Ian Underdown
Chair of the Planning Committee

Ian has lived in Hamble all his life and is a retired teacher (Head of Technology). He has been an independent Hamble Parish Councillor for 26 years and our Chairman five times.



Cllr Craig Palmer

Craig's focus will be on Crime and Environmental issues. As a member of Hampshire Constabulary's Independent Advisory Group, he works with the Police to ensure Hamble remains a safe area for the community and local businesses to live and operate in.



Cllr Malcolm Cross

Malcolm has been a Parish Councillor and Borough Councillor for some years now, and intends to use his position on the Council to help improve the foreshore and Mount Pleasant facilities, and to try to overcome the parking problem.



Cllr Debbie Rolfe

Debbie has lived in Hamble for 25 years, running The Victory Inn with her parents for 22 of these. She loves living in Hamble; the sense of community is important to Debbie, and she feels very lucky to live near the water with lots of green spaces.



Cllr Trevor Dann

Trevor takes an active interest in village affairs, and would like to see better engagement with young people, reduced development and traffic, and to "keep the cork in the bottle" on crucial weak points, such as Satchell Lane and the fields along the route into the village.



Cllr Tony Ryan

Tony's main aim is to ensure Hamble Parish Council resources are utilised to improve, support, and maintain the Hamble community and amenities so residents and visitors can continue to enjoy our Hamble environment in peace.

For more information about each councillor and their priorities for the Parish visit
<http://www.hambleparishcouncil.gov.uk/community/hamble-parish-council-14956/councillors/>

YOUR COUNCILS AND COMMITTEES – 2021/22

Panel / Group	Frequency	Dates		
Full Council	Monthly – second Monday	14.06.21 12.07.21 13.09.21 11.10.21	08.11.21 13.12.21 10.01.22	14.02.22 14.03.22 11.04.22
Planning Committee <ul style="list-style-type: none"> • Highways & infrastructure • Designations • Design / local policies • Enforcement • Applications • Footpaths 	Monthly – 4 th Monday in every month	24.05.21 28.06.21 26.07.21 27.09.21	25.10.21 22.11.21 24.01.22	28.02.22 28.03.22 25.04.22
Asset Management Committee <ul style="list-style-type: none"> • Leases • Buildings / facilities • Land / Estate • Health & Safety • Fees & Charges 	First Monday – 7pm on every second month	05.07.21 06.09.21 01.11.21 03.01.22 07.03.22 02.05.22		

Working Groups	Frequency	Working Groups	Frequency
Personnel Working Group <ul style="list-style-type: none"> • Pay & conditions • Disciplinary • Staff health & safety • Performance Management 	First Monday – 7pm on every second month	Friends of Westfield Common (Reports to AMC)	As required – 3 meetings a year
Communications Working Group Coordinate all community communications (Reports to Full Council)	Tuesday pm following Council meeting	Footpaths Working Group (Reports to AMC)	Tuesday pm following Council meeting
Operations Working Group Coordinate operational issues across the council. (Reports to Full Council)	To be agreed	Covid-19 Recovery Working Groups	As required – time limited – 3 months
Review Panel <ul style="list-style-type: none"> • Complaints • Appeals of individual decisions • Staffing / disciplinary 	As required	Interpretation Board Task and Finish (Reports to AMC)	As required
Dinghy Park Working Group (Reports to AMC)	As required – 3 meetings a year	Railway Station Partnership	TBA
		Litter and Recycling	As required
		Young people	As required
		Mercury Hub	As required
		Allotment Liaison Group	As required

Council Representations on External Bodies	
External Group	Council Representatives
Henville Trust (year 3 of 4 year term)	Cllr Underdown
Hamble Village Memorial Hall	Vacancy
Hamble Estuary Partnership	Cllr Underdown
Police Liaison Committee	Cllr Palmer – To be confirmed

GET TO KNOW WHAT YOUR COUNCIL DOES FOR YOU



THE 2021/22 BUDGET AND COUNCIL TAX

Despite being hit by a significant drop in Parish Council income last year, at its January meeting the Parish Council decided not to increase its element of the Council Tax and to hold the fees and charges for the next twelve months (except a modest increase for allotments).

We also agreed to extend the parking permit for the Foreshore for 12 months without charge. We hope these small steps will help everyone in the next 12 months as we recover from the pandemic.

COUNCIL LED COMMUNITY NEWS

EASTLEIGH BOROUGH COUNCIL LOCAL PLAN

The Eastleigh Borough Local Plan is moving to the next stage, and is due to commence public consultation on the Inspector's proposed recommendations. While the consultation dates for this have not yet been fixed, they are likely to run from the beginning of June until at least mid-July.

The Inspector's proposed modifications follow from the Local Plan examination hearings, and include a number of changes. For Hamble, the most notable change relates to Mercury Marina where the policy for the Hotel has been removed alongside the proposals put forward by MDL for residential development.

Once the public consultation exercise has concluded, the Inspector will consider the representations made on the modifications and finalise her report and recommendations.

BOFOR GUN GETS A FACELIFT!

A big thank you to Hamble Conservation Volunteers who have recently renovated the historic anti-aircraft Bofor gun in its new position at Hamble Point car park. This task was made particularly demanding as the gun had deteriorated markedly while decisions were being made by Eastleigh Borough Council over its future. Your efforts are much appreciated by Hamble Parish Council and Hamble residents.



HAMBLE CONSERVATION VOLUNTEERS

Hamble Conservation Volunteers remained active during the recent lockdown by continuing to sweep the Parish for litter on a routine basis as individuals. With Covid restrictions easing we have been able to return to our regular team tasks which have included restoring the circular oak bench on the Hamble foreshore.

Tasks are set for us by Hamble Parish Council and Eastleigh Borough Council and our capability to respond is determined by the number of volunteers available so please join us if you can. Some tasks can be physically demanding but there is a role for virtually all levels of fitness and agility. All equipment and protective clothing is provided by us and clear briefings are given before we start.

If you would like to know more about us please either visit www.hambleconservationvolunteers.org.uk or call Philip Rawlinson on 07810 453138.



THE MERCURY LIBRARY & HUB

The Mercury Library and Community Hub is open every Tuesday, Thursday and Saturday from 10am to 1pm, plus every 1st and 3rd Wednesday from 10am to midday for the Citizens Advice Bureau.

COUNCIL LED COMMUNITY NEWS cont

RUBBISH!

It's a hot topic, and one of the issues that you contact us about most at this time of year. You'll see our new Parish Warden Mark out and about over the next few months keeping things clean and tidy as well as arranging clean ups in specific areas. Mark will also be working with Councillors to map all the bins across the village, see where there might be the wrong sort of bins, and plan a programme of replacements and additions. Not all bins belong to the Parish but we hope to engage Eastleigh Borough Council where the bins belong to them. One small success is that we have managed to get them to agree to replace the bin that disappeared on Copse Lane, with the replacement being installed in the next month or so.

Councillors involved in the project are: Cllr Sheelagh Cohen, Cllr Michelle Nicholson and Cllr Chris Jones.

SPONSOR A TREE

Would you, your employer or business like to sponsor a tree to help make Hamble a greener place to live? We're looking for donations of £150 per tree; in return you will get a plaque in recognition of your contribution, and joint publicity. If this is of interest, please email the Parish Clerk (details on the front page).



HAMBLE LE RICE FLOWER CLUB

Exactly 16 months after our last meeting in the Memorial Hall and we are raring to go. We have continued to thrive through maintaining regular contact with our members via Zoom demonstrations and classes, newsletters, quizzes and social media. The telephone has also played a strong role! All being well we will meet in July.

MONDAY 12 JULY - DEMONSTRATION BY CHRISTINE WRIGHT - 'ANYTHING GOES'

Hamble Memorial Hall. Doors open at 1pm for a 1.30pm Demonstration

All members and visitors are encouraged to bring containers, foliage and flowers from their homes and gardens and see what Christine can create on the spot. This should be a very entertaining afternoon.

With restrictions gradually being lifted we would love to welcome new visitors and members to our club.

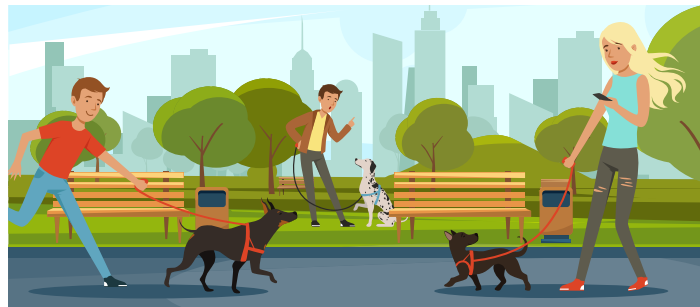
Contact: Sheila Barker – 02380 453718



BE A GOOD NEIGHBOUR – SCOOP THE POOP!

We have received reports that there are issues with dogs messing in the local area.

Leaving dog mess in a public place can cause lasting illness and is dangerous. It's also nasty for those that have to keep your neighbourhood clean. So do the right thing and bag and bin it!



BIKE BACK BETTER!

Interest in cycling has surged during the COVID-19 pandemic, with an extra £1 billion spent on bicycles and cycling accessories in the UK, and 28% of people saying they plan to cycle more now than before. Cycling brings numerous benefits to health, wellbeing and the environment, so we're supporting Eastleigh Borough Council's campaign to #BikeBackBetter by encouraging our residents to cycle more and drive less. Cycling is...

- ✓ Good for you
- ✓ Good for the environment
- ✓ Good for your bank balance

There are few better things you can do than swapping four wheels for two, so why not get involved and keep cycling! #BikeBackBetter



COUNCIL LED COMMUNITY NEWS cont

NEIGHBOURHOOD WATCH WEEK 2021

If the pandemic has taught us anything, it is that neighbourliness and community spirit are just as important as ever. This year's Neighbourhood Watch Week (5 – 11 June) emphasised the importance of building on the new and existing neighbourly relationships built throughout the pandemic, and encouraged us all to 'Listen. Talk. Do'. For a range of ideas on how you can better engage with your neighbours and create stronger community ties, visit ourwatch.org.uk/nwweek. Here's a few thoughts to get you started:

LISTEN:



Listen to our 'Community Podcast'



Host a 'Big Lunch' with your neighbours



Listen to a crime prevention webinar

TALK:



Set up a 'Calling Tree' within your community



Gift your neighbour a 'Conversation Starter Postcard'



Conduct an 'Environmental Visual Audit'

DO:



Organise a 'Litter Pick'



Organise a 'Street Party'



Give back and take part in the 'Month of Community'

#LOVEWHEREYOU LIVE

We are so lucky to live in such a beautiful area, and to showcase the Parish, we would like you to share your favourite photos of Hamble and surrounds.

Send your photos to us via Facebook messenger, and every month we'll choose our favourite to share in the newsletter, and as our banner image on Facebook.

SKY SIGHTS FOR JUNE

Summer is the best time for seeing the southerly constellations of the zodiac that are normally either too close to the horizon, or below it. On June evenings, the bright star Antares twinkles low in the south. Antares is a cooler star than the Sun and so appears reddish in colour. It lies at the heart of Scorpius, the scorpion. In Greek myth, the scorpion stung Orion to death, and in the sky they are kept safely apart, Orion in the winter sky and the scorpion in the summer. The overall shape of the constellation very much resembles a scorpion poised

to strike, but unfortunately the arc of stars that makes up the scorpion's curving tail is too far south to be seen from our latitudes. The near-full Moon lies above right of Antares on the night of 22 June.

- 10 New Moon
- 21 Summer solstice (04:32 BST)
- 24 Full Moon

Ian Ridpath

UPCOMING DATES

- Hampshire Farmers Market – 4 September
- Annual Parish Meeting – originally planned for the 19 May, this will now be rescheduled for a date after the 21 June once restrictions have been lifted.
- Local Area Committee meeting – the meeting scheduled for 10 June has been cancelled, with outstanding issues deferred to the next meeting on 23 September.

Letology!

We know the winning
formula to letting
your property



Call us today on:

01489 854 382

and see how we can make
letting simple for you

L | LEADERS